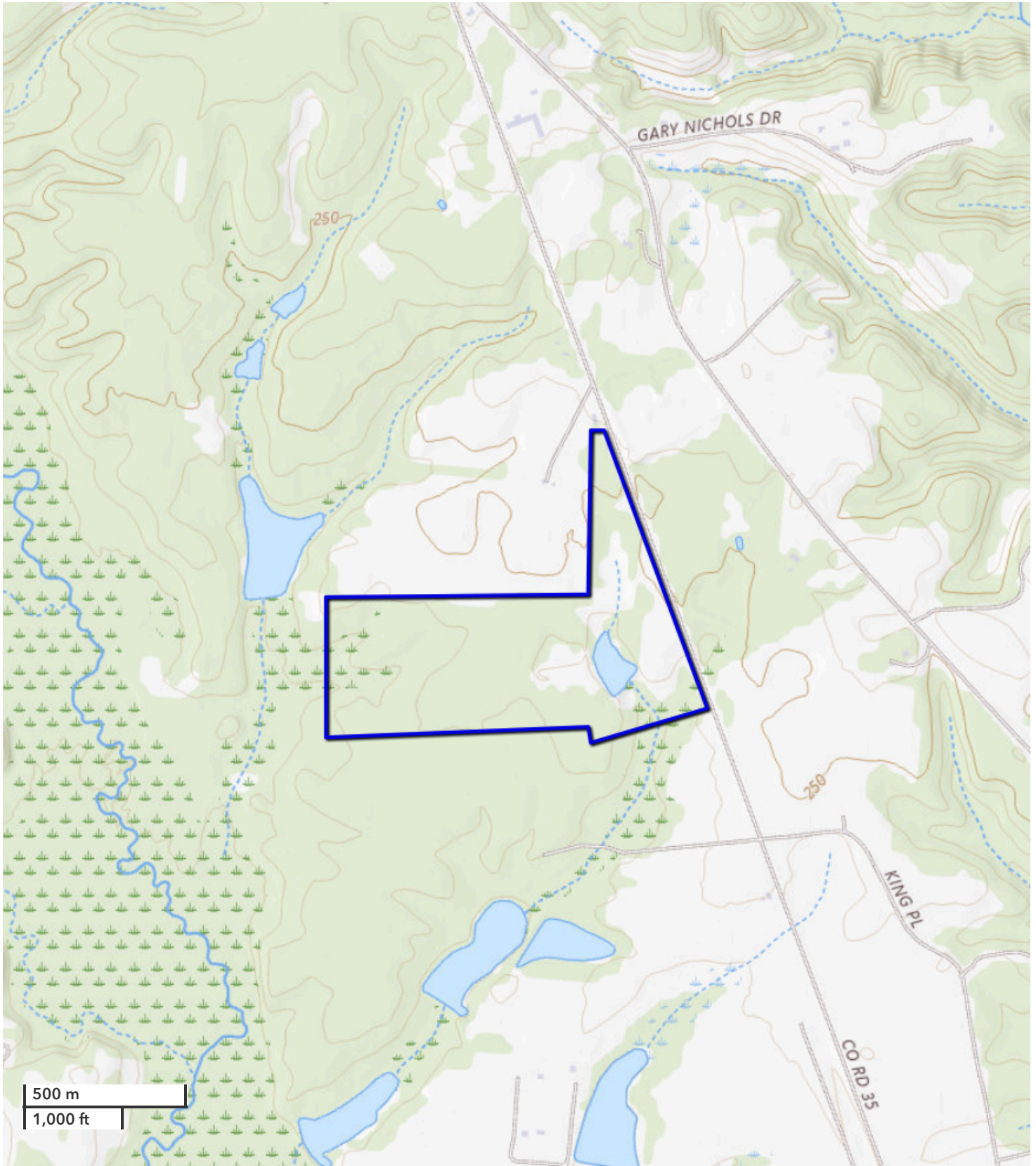




WILL HAIRSTON
Land Professional
whairston@nationalland.com
Mobile: 334-349-2001
Office: 251-551-7945
Fax: 888-672-1810

South Perry Co Hunting lake and Pasture Tract
Perry County, AL
124 +/- Acres



All boundary lines noted in pictures, aerials or maps should be considered estimates and not relied on as legal documents or descriptions.