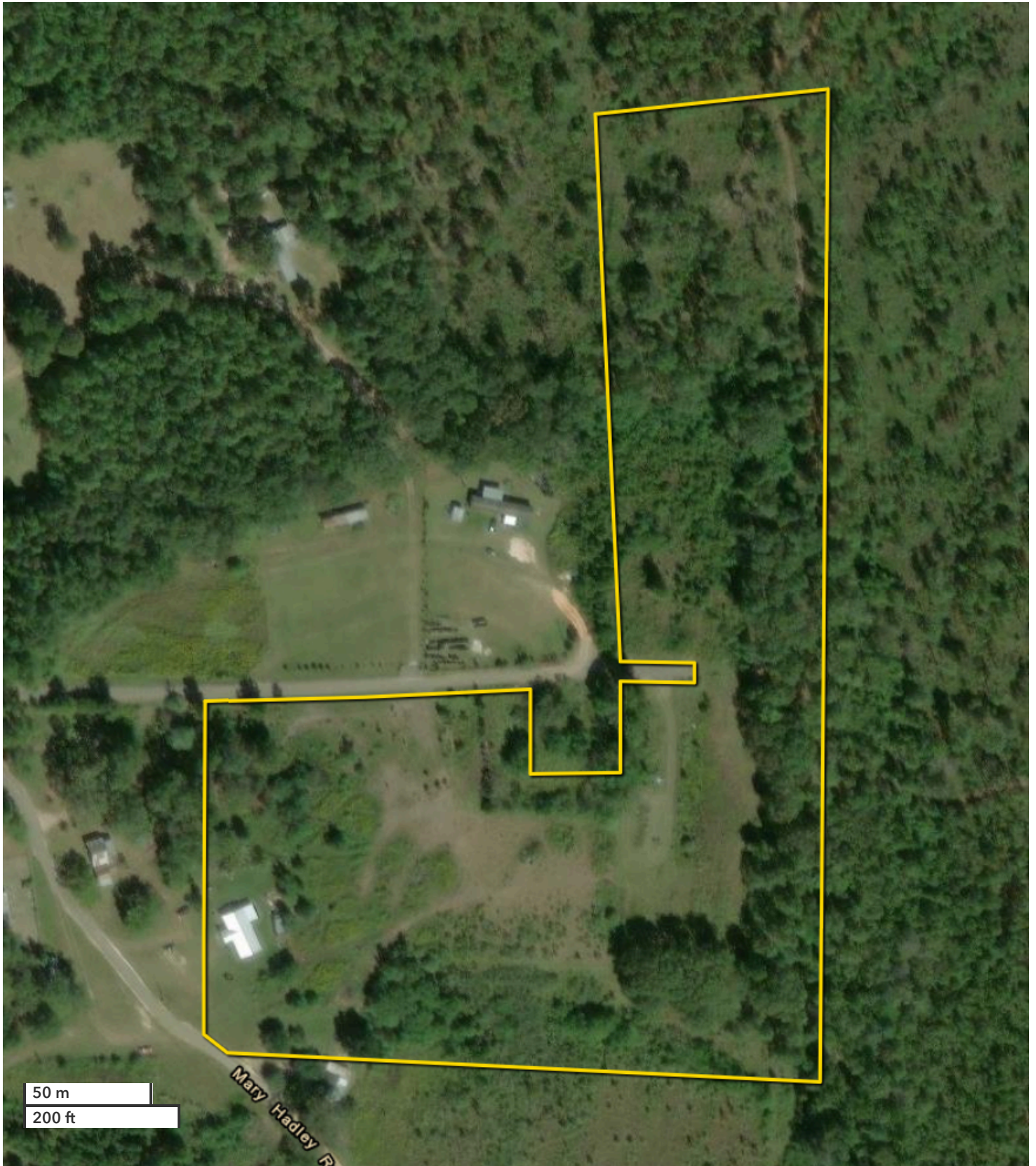




TOM LEATHERBURY, JR.
Land Professional
tleatherbury@nationallandrealty.com
Mobile: 251-422-5643
Office: 251-732-6159
Fax: 888-672-1810

Perdido Bible Road Homestead, Homesite, Mini-Farm, &/or RV Develop
Baldwin County, AL
12.9 +/- Acres



All boundary lines noted in pictures, aerials or maps should be considered estimates and not relied on as legal documents or descriptions.