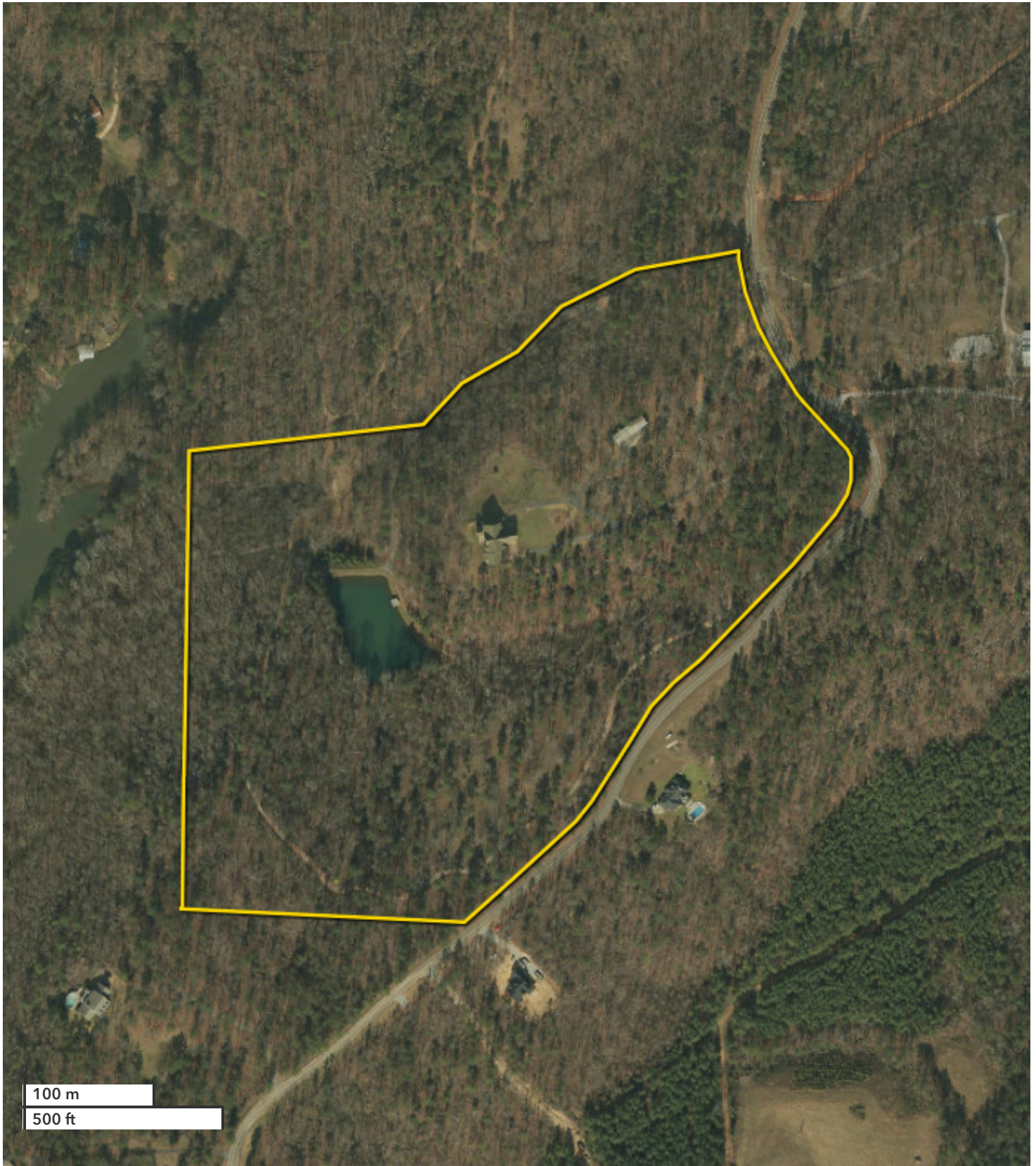




JOHN CONNOR FARMER
Land Professional
jcfarmer@nationalland.com
Mobile: 205-641-0453
Office: 855-657-5263
Fax: 888-672-1810

40 Acres with Log Cabin & Private Pond
Shelby County, AL
40 +/- Acres



All boundary lines noted in pictures, aerials or maps should be considered estimates and not relied on as legal documents or descriptions.