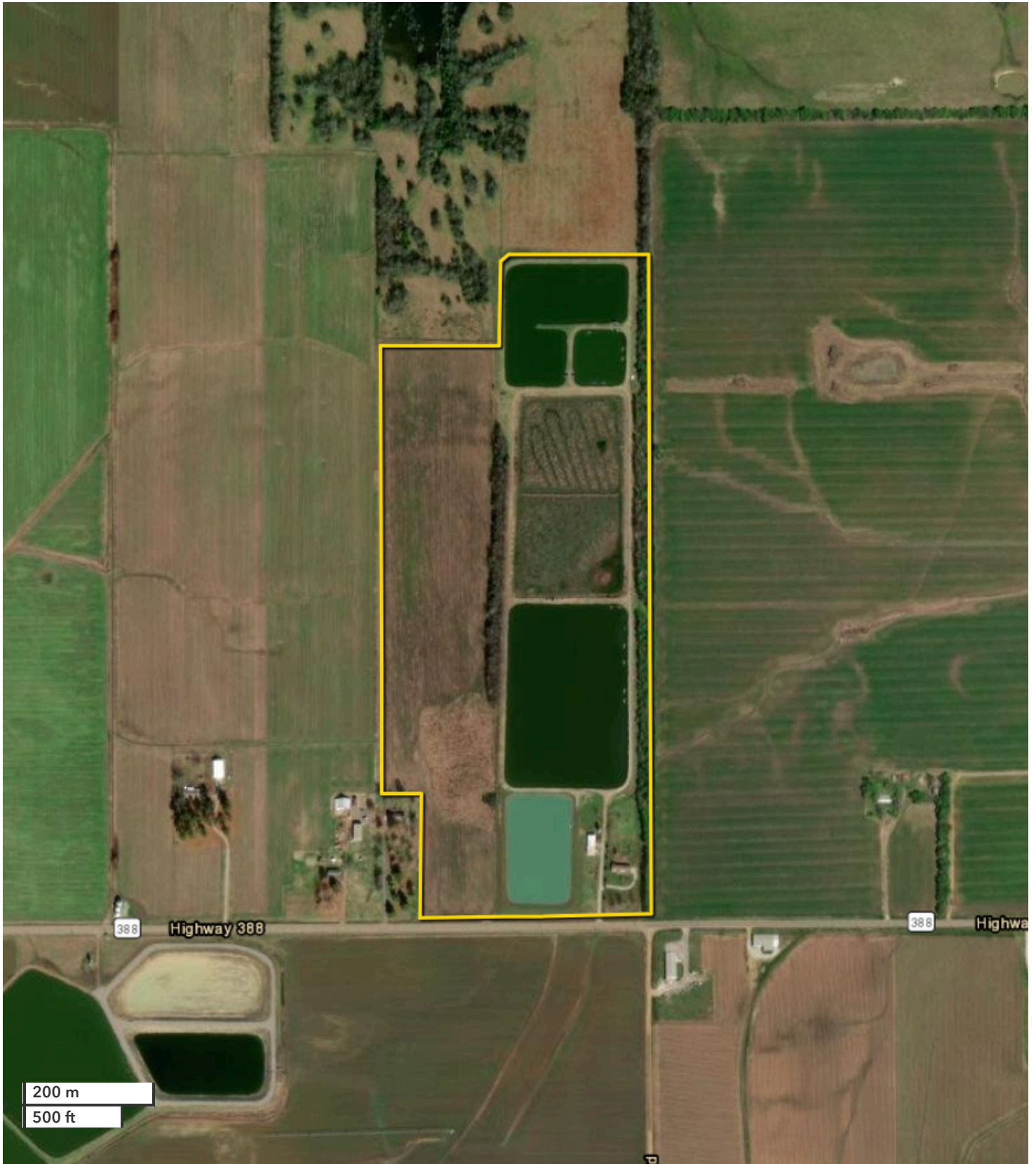




LEE SKINNER
Land Professional
lskinner@nationalland.com
Mobile: 662-549-2095
Office: 205-606-4074
Fax: 864-331-1610

Brooksville Row Crop, Cattle & Catfish Farm Sealed Bid
Noxubee County, MS
92.5 +/- Acres



All boundary lines noted in pictures, aerials or maps should be considered estimates and not relied on as legal documents or descriptions.