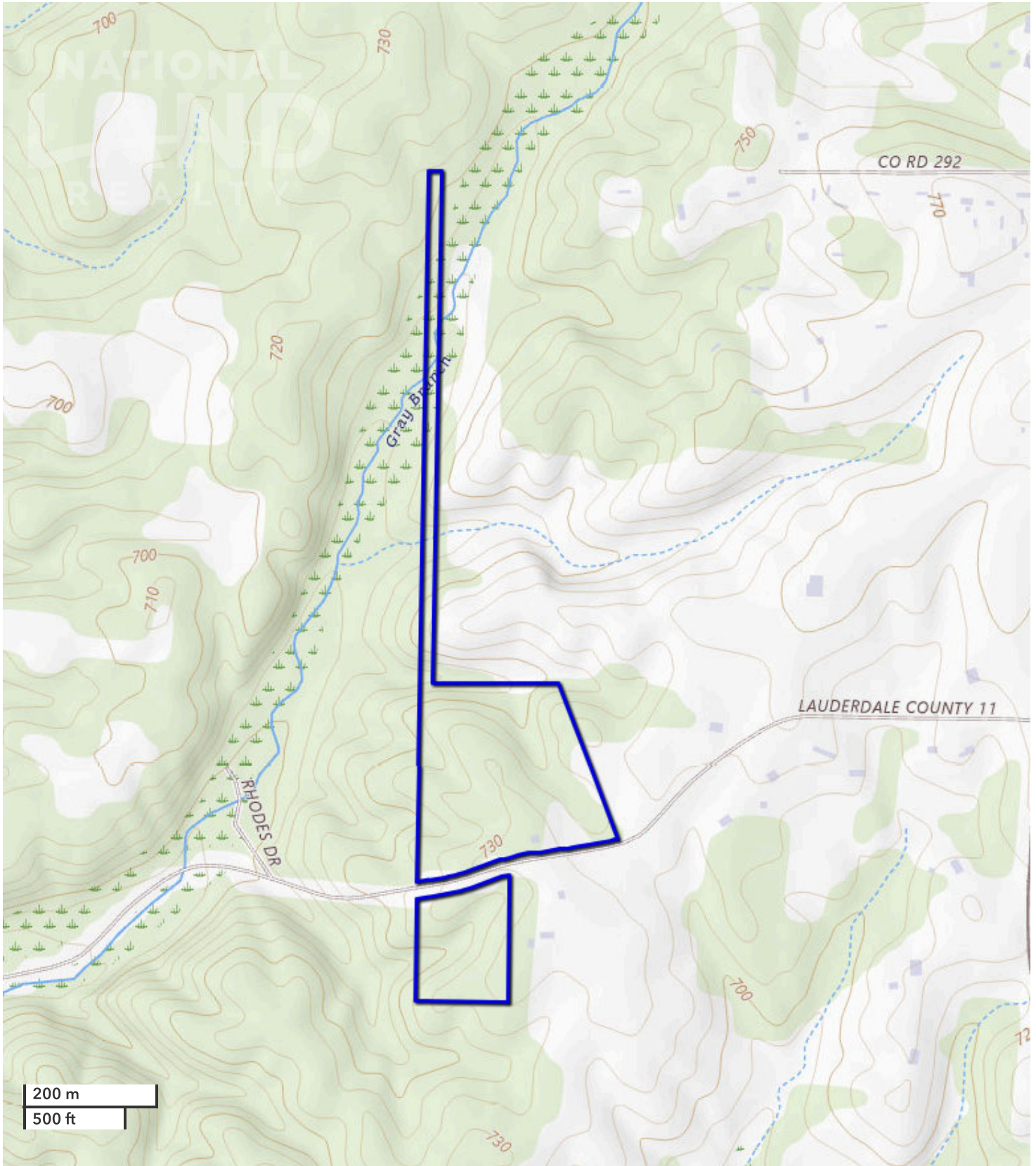




SETH THOMPSON  
Land Professional  
sthompson@nationalland.com  
Mobile: 256-436-1800  
Office: 256-769-0805  
Fax: 864-331-1610

Hardwood Hunting Tract  
Lauderdale County, AL  
26 +/- Acres  
Topography Map



All boundary lines noted in pictures, aerials or maps should be considered estimates and not relied on as legal documents or descriptions.