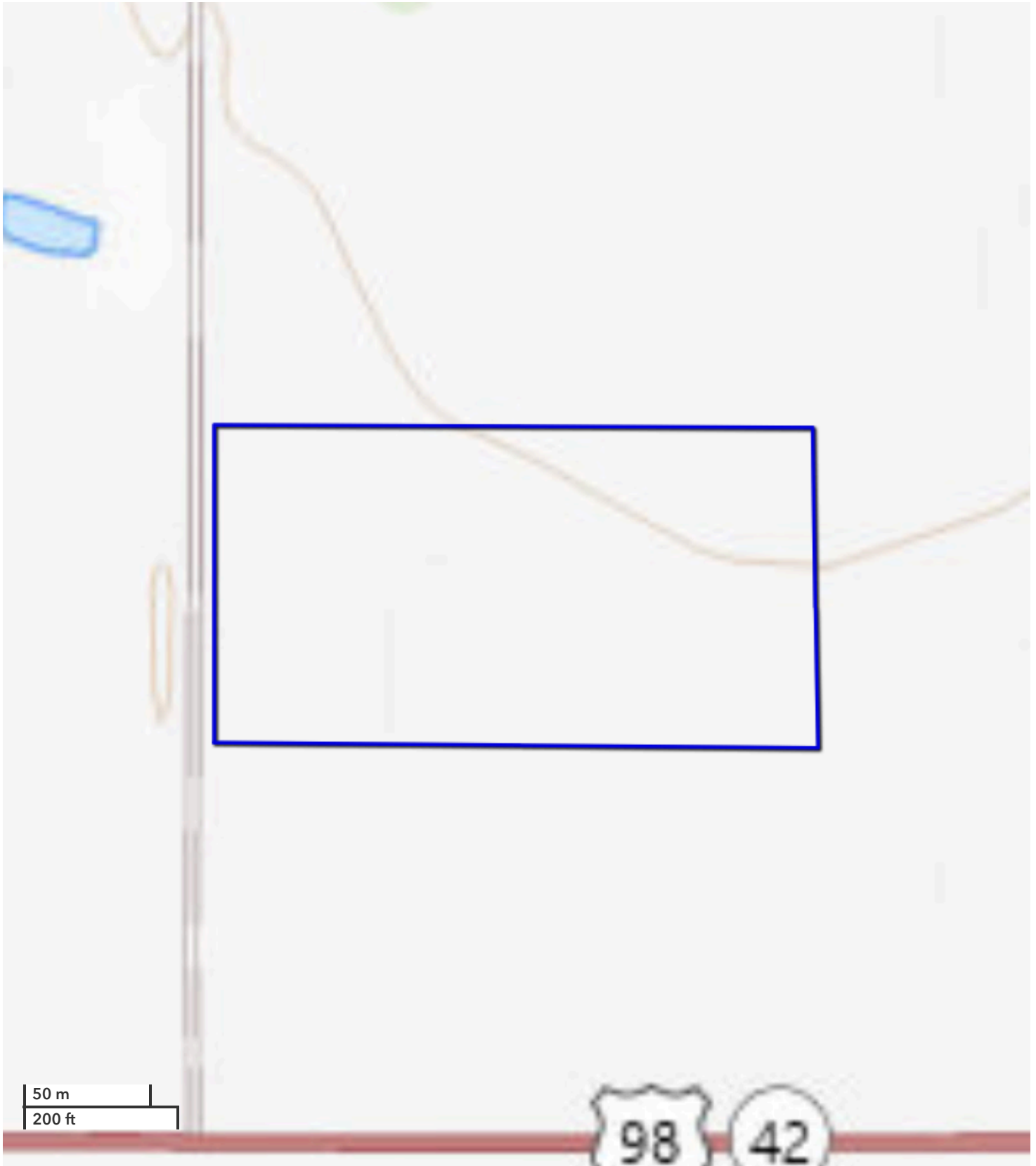




JEREMY BANKS
Land Professional
jbanks@nationalland.com
Mobile: 256-278-1889
Office: 256-860-4036
Fax: 864-331-1610

Estate Home Lot 2 Hwy 98
Baldwin County, AL
10.3 +/- Acres



All boundary lines noted in pictures, aerials or maps should be considered estimates and not relied on as legal documents or descriptions.