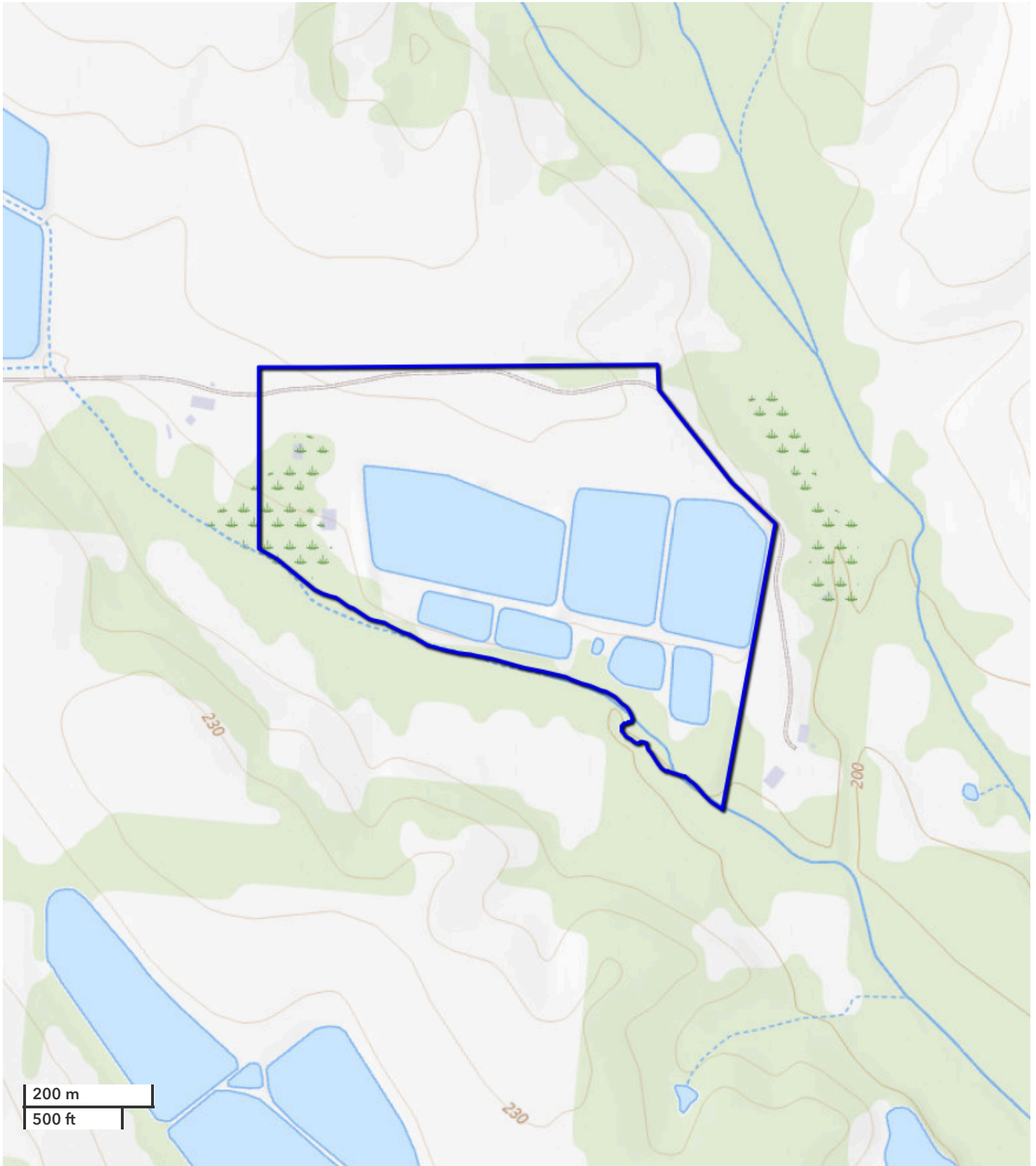




JASON ABRAMS
Land Professional
jabrams@nationalland.com
Mobile: 334-216-0690
Office: 334-489-5876
Fax: 888-672-1810

MITCHELL JONES
Land Professional
mjones@nationalland.com
Mobile: 205-529-5500
Office: 205-551-8982
Fax: 888-672-1810

Duck Hunting, Residential and Income Producing Fa
Perry County, AL
83 +/- Acres



All boundary lines noted in pictures, aerials or maps should be considered estimates and not relied on as legal documents or descriptions.