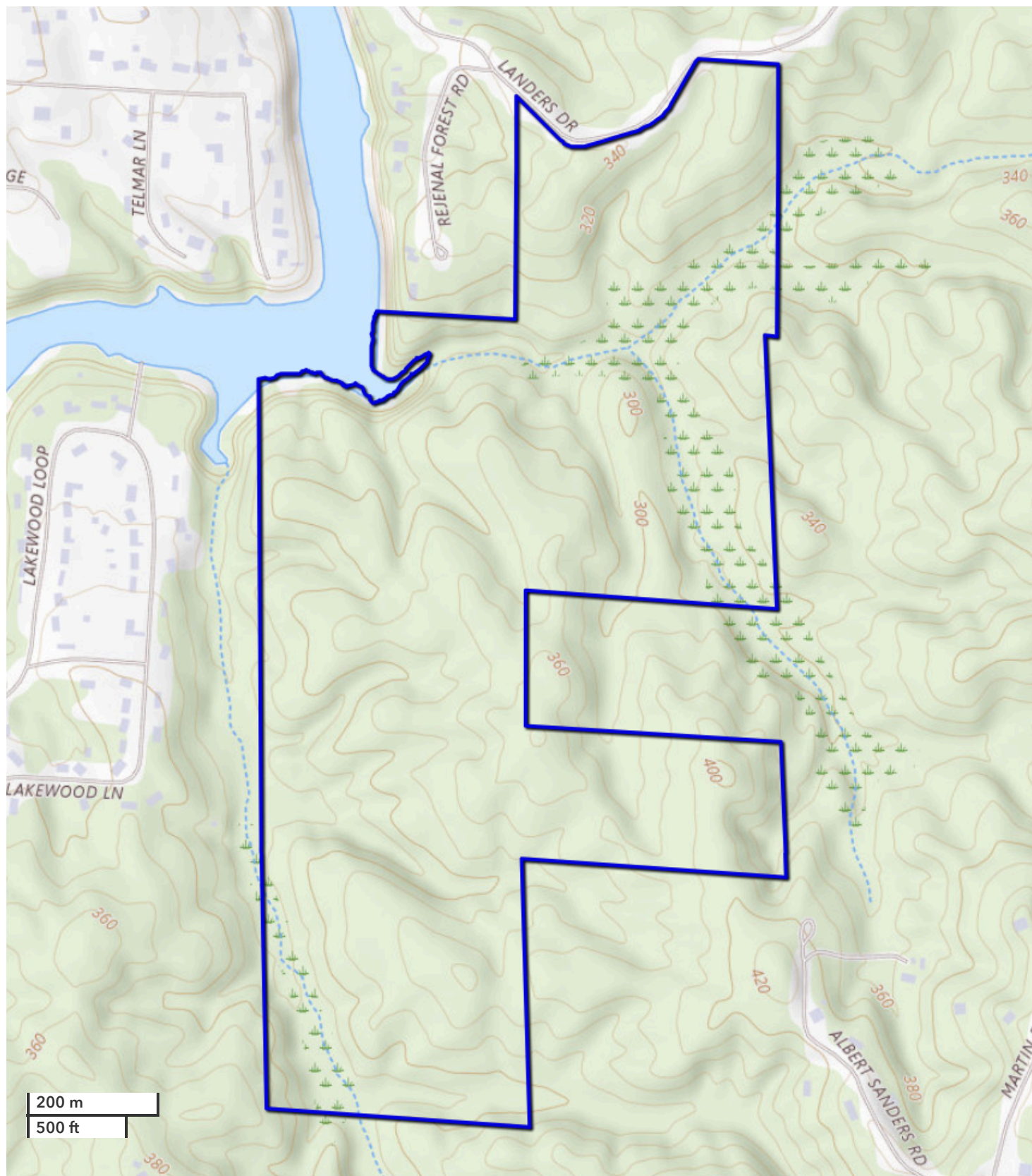




JOSH HIXON
Land Professional
jhixon@nationalland.com
Mobile: 205-361-0946
Office: 205-557-8272
Fax: 864-331-1610

ALLAN HIXON
Land Professional
ahixon@nationalland.com
Mobile: 205-799-1422
Office: 205-606-5414
Fax: 205-343-2144

Lake Tuscaloosa Potential Development
Tuscaloosa County, AL
208 +/- Acres



All boundary lines noted in pictures, aerials or maps should be considered estimates and not relied on as legal documents or descriptions.