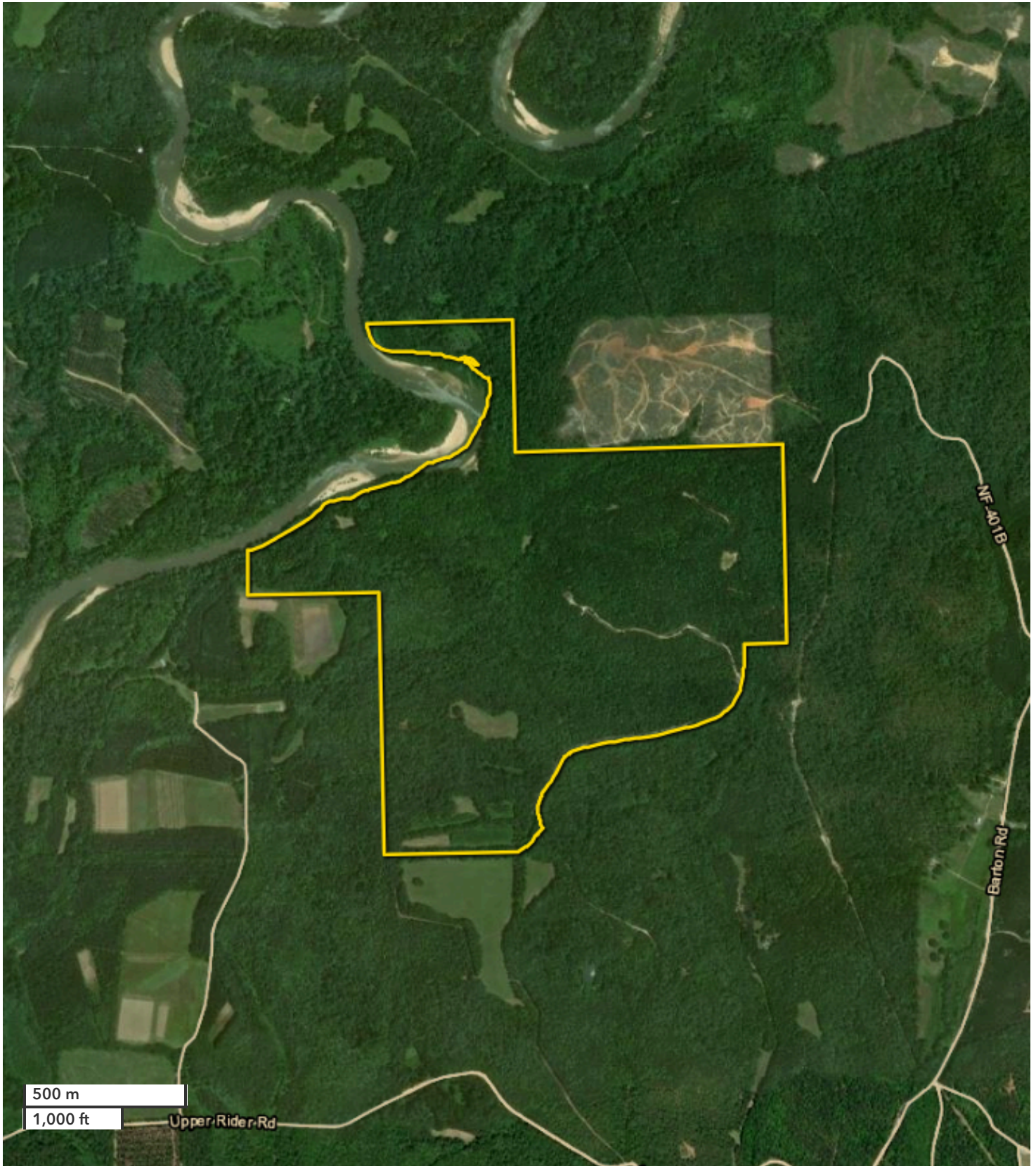




MITCHELL JONES
Land Professional
mjones@nationalland.com
Mobile: 205-529-5500
Office: 205-551-8982
Fax: 888-672-1810

WILL SNIDER
Land Professional
wsnider@nationalland.com
Mobile: 205-565-6680
Office: 205-654-8447
Fax: 864-331-1610

The Cahaba River Camp: A Turnkey Hunting, Recre:
Perry County, AL
335 +/- Acres



All boundary lines noted in pictures, aerials or maps should be considered estimates and not relied on as legal documents or descriptions.