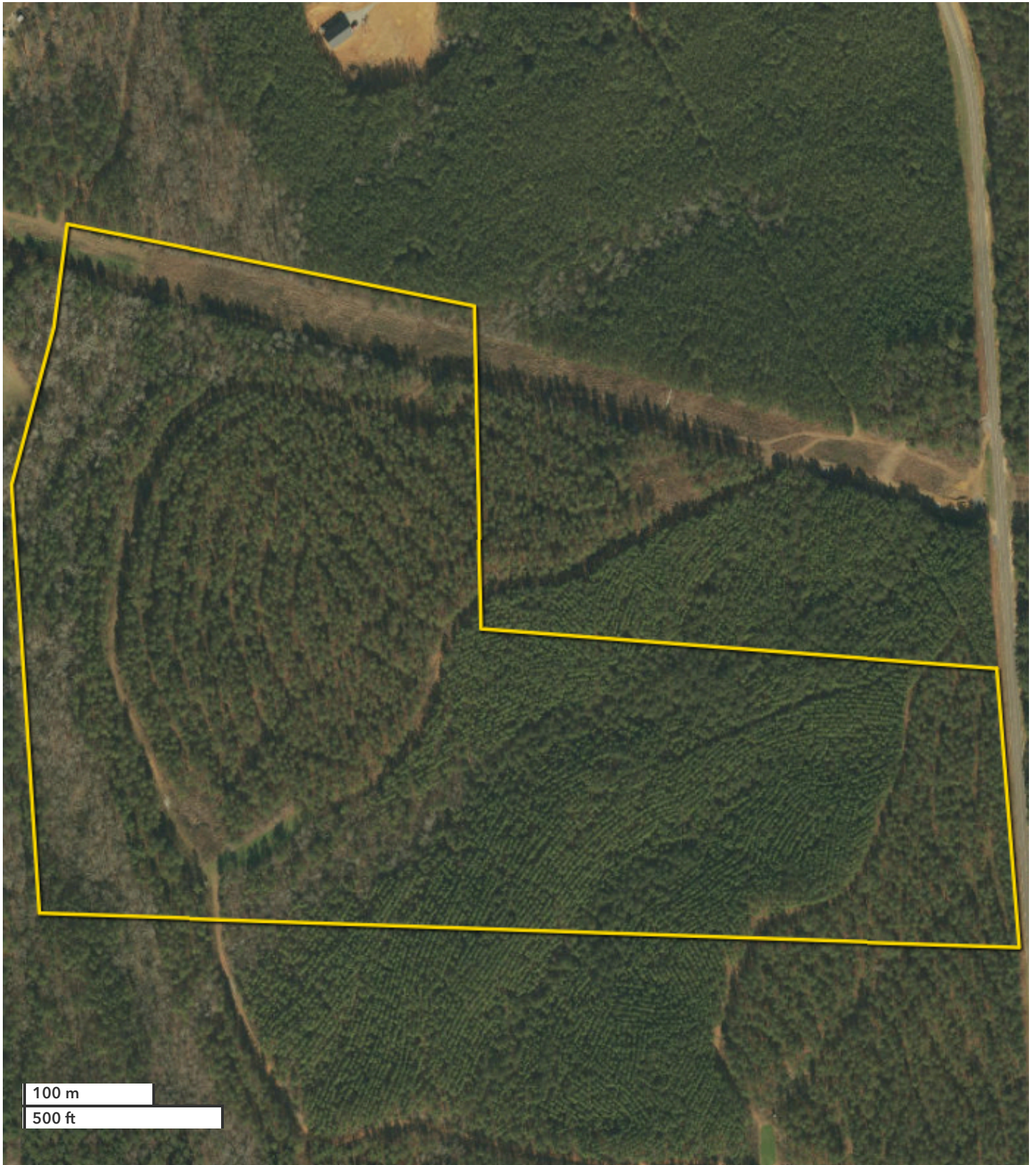




SEAN BROWN
Land Professional
sbrown@nationalland.com
Mobile: 205-531-9221
Office: 251-766-0549
Fax: 888-672-1810

Chelsea Fourmile Creek Tract
Shelby County, AL
65 +/- Acres



All boundary lines noted in pictures, aerials or maps should be considered estimates and not relied on as legal documents or descriptions.