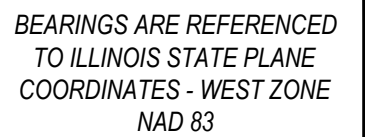
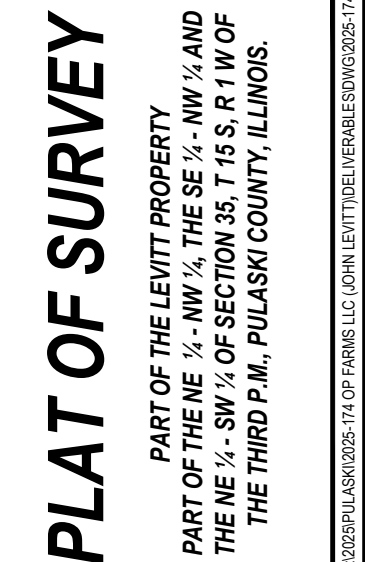


THE LEVITT PROPERTY
PART OF THE NE ¼ - NW ¼, THE SE ¼ - NW ¼ AND
THE NE ¼ - SW ¼ OF SECTION 35, T 15 S, R 1 W OF
THE THIRD P.M., PULASKI COUNTY, ILLINOIS.
MAIN SOURCE OF REFERENCE: BOOK 194, PAGE 483



Professional Services
Refrigerators & Energy Services
104 S 4TH STREET
P.O. BOX 125
Vienna, IL 62995
Tel: 618-658-6065
www.ShawneePSI.com



Path: S:\2025\PULASKI\2025-1/4 UP FARMS LLC (JOHN LEVIT) \DELIVERABLES\DWG\2025-1/4PLAT.DWG

#	Date	Note

Drawing Status
☐ Preliminary Drawing
☒ Final Drawing

This Professional Service Conforms To
The Current Illinois Minimum Standards
of Practice Applicable To Boundary
Surveys.

