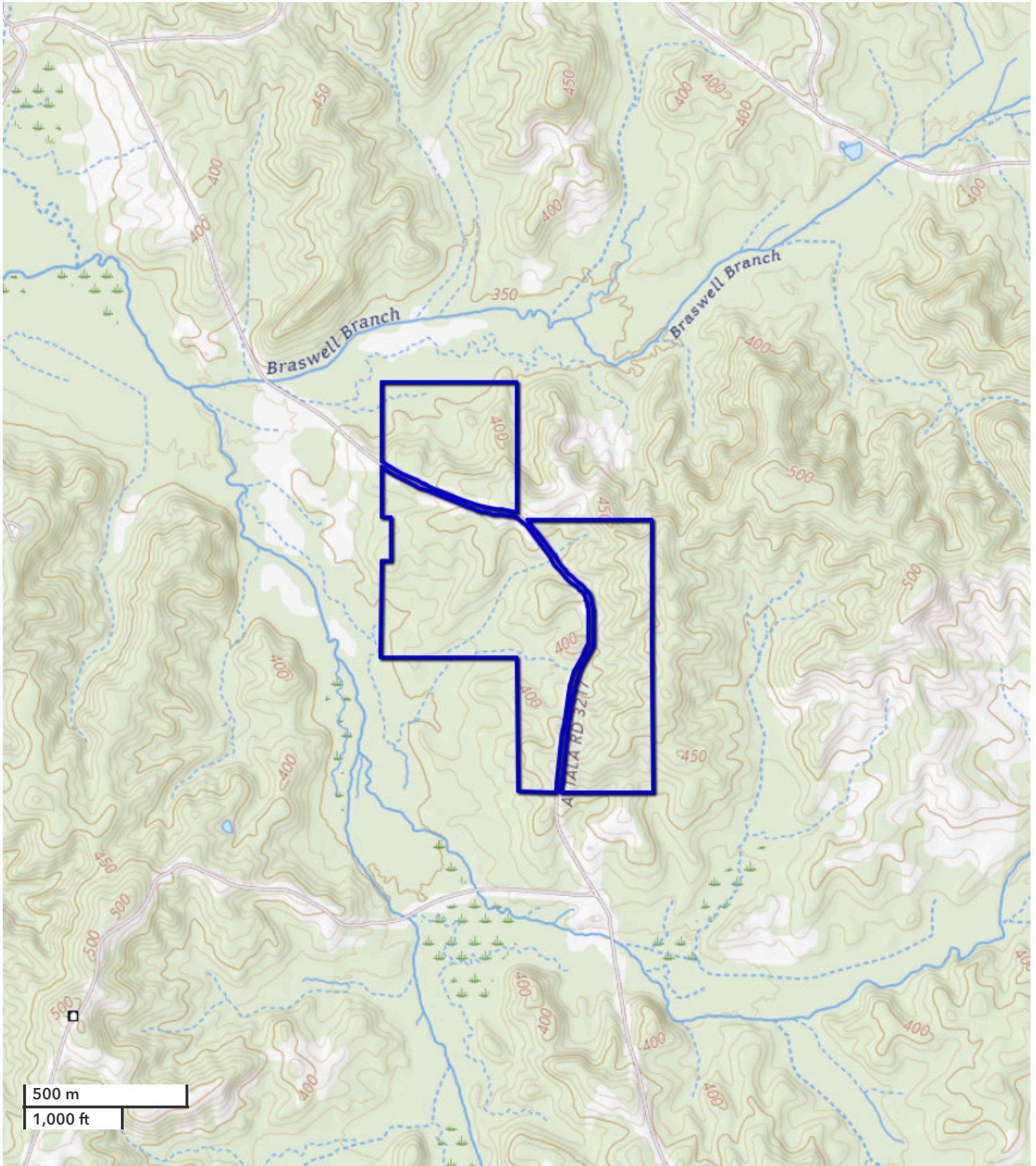




GREG CLEARMAN  
Land Professional  
gclearman@nationalland.com  
Mobile: 601-408-0019  
Office: 601-895-1956  
Fax: 601-878-5424

Natural Timberland – Ideal for Recreation, Investment, or Development  
Attala County, MS  
160 +/- Acres



*All boundary lines noted in pictures, aerials or maps should be considered estimates and not relied on as legal documents or descriptions.*