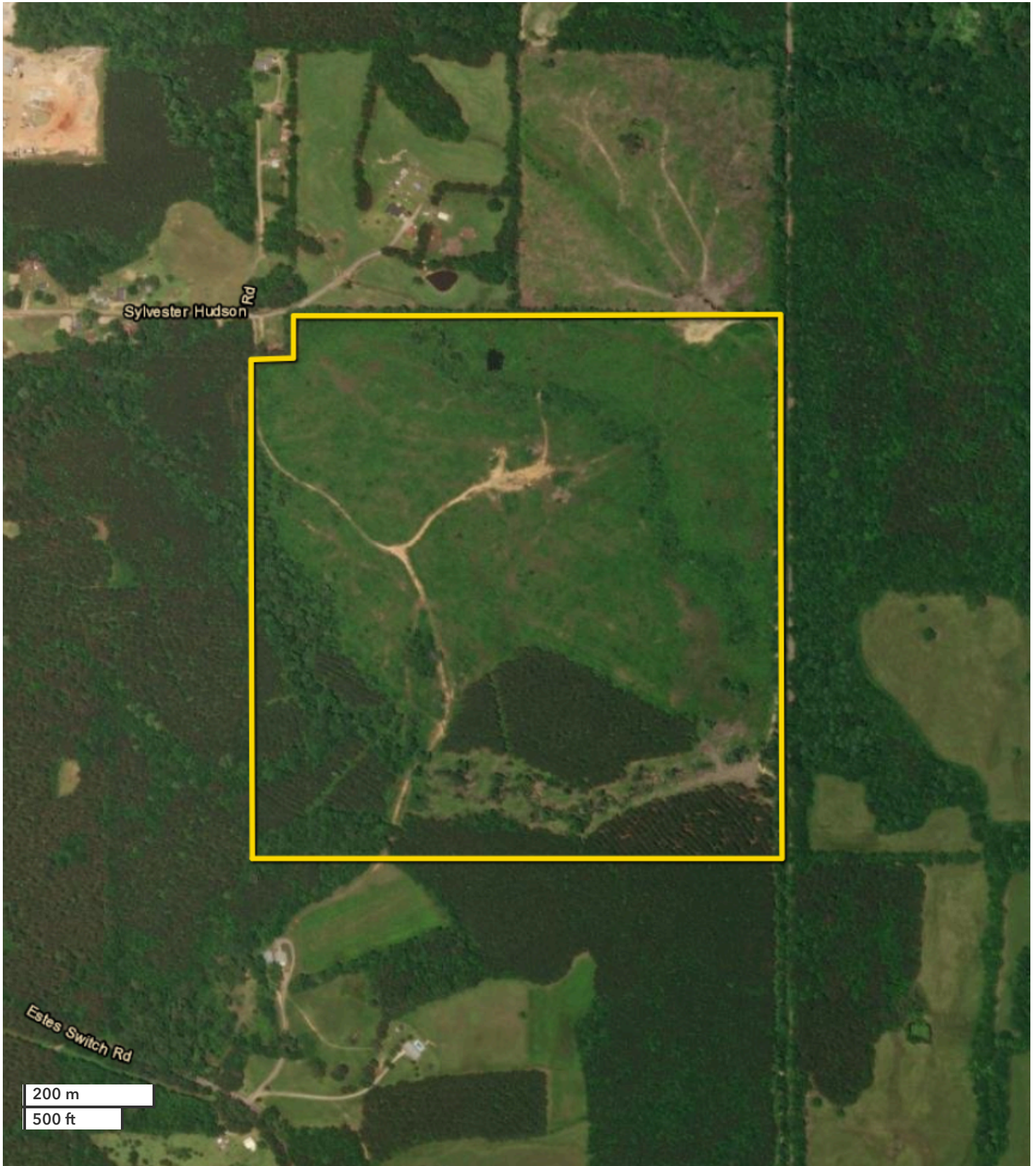




LEE SKINNER
Land Professional
lskinner@nationalland.com
Mobile: 662-549-2095
Office: 205-606-4074
Fax: 864-331-1610

JAMES LAUDERDALE
Land Professional
jlauderdale@nationalland.cc
Mobile: 251-550-7665
Office: 251-360-3397
Fax: 205-343-2144

Louisville Hunting & Timber
Winston County, MS
160 +/- Acres



All boundary lines noted in pictures, aerials or maps should be considered estimates and not relied on as legal documents or descriptions.