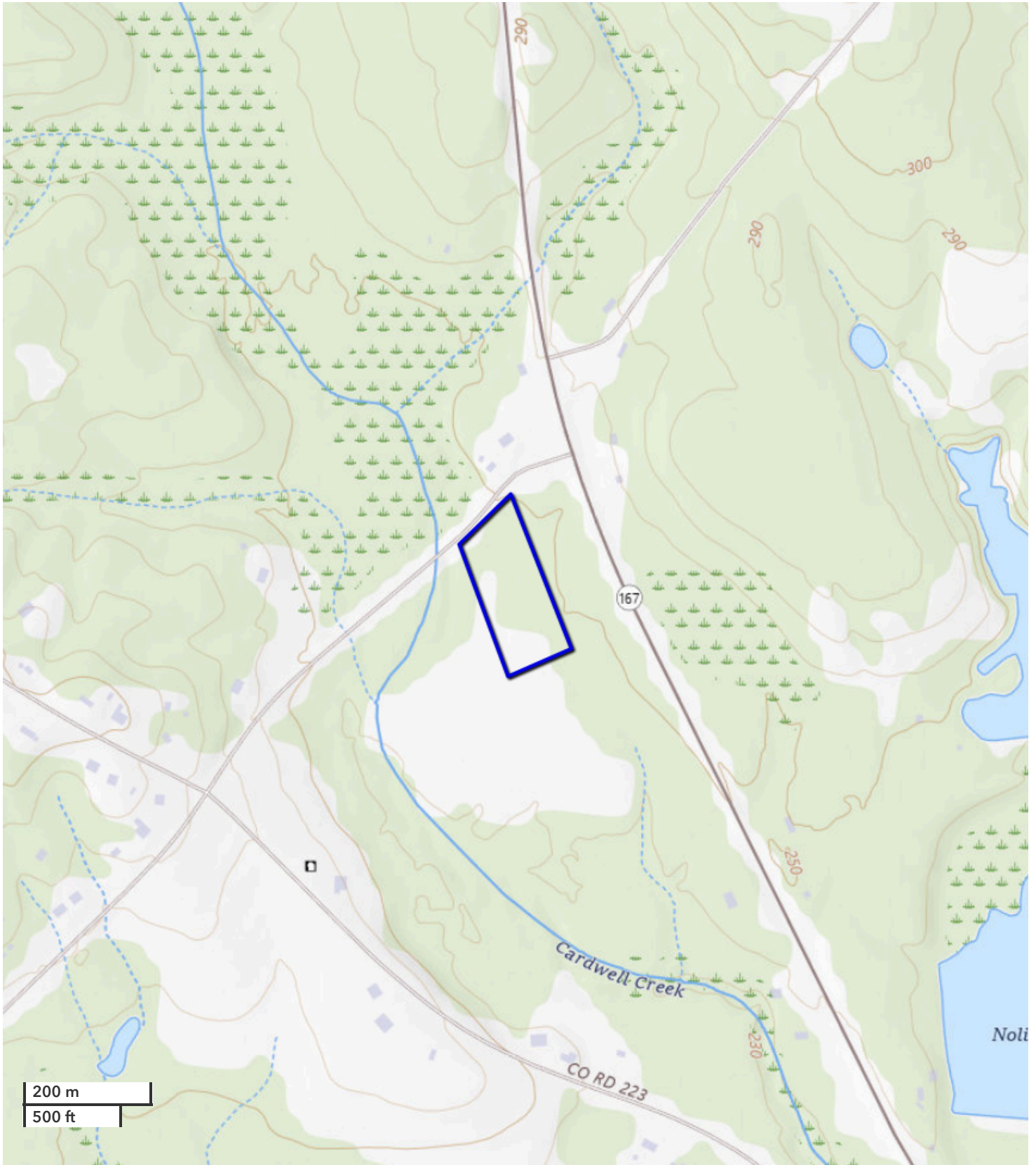




ASHTON MCKELVY
Land Professional
amckelvy@nationalland.com
Mobile: 334-494-5882
Office: 334-378-2379
Fax: 888-672-1810

FORREST DURING, ALC
Land Broker
fduring@nationalland.com
Mobile: 205-902-8779
Office: 205-548-1792
Fax: 888-672-1810

Homesite with Road Frontage on County Road 239
Coffee County, AL
6 +/- Acres



All boundary lines noted in pictures, aerials or maps should be considered estimates and not relied on as legal documents or descriptions.