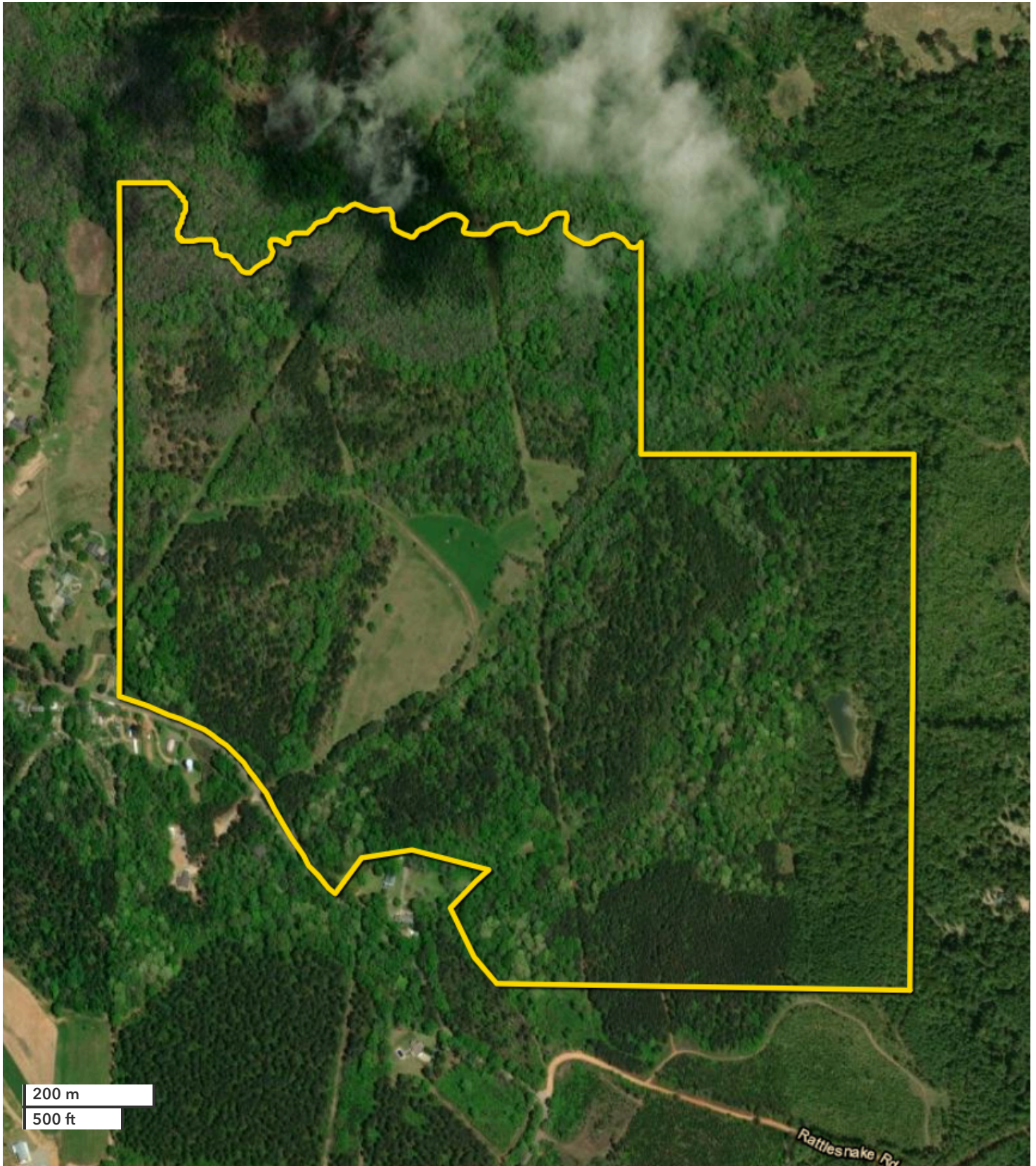




JOSH HIXON  
Land Professional  
jhixon@nationalland.com  
Mobile: 205-361-0946  
Office: 205-557-8272  
Fax: 864-331-1610

ALLAN HIXON  
Land Professional  
ahixon@nationalland.com  
Mobile: 205-799-1422  
Office: 205-606-5414  
Fax: 205-343-2144

Elliotts Creek Homeplace And Recreational Tract  
Hale County, AL  
265 +/- Acres



*All boundary lines noted in pictures, aerals or maps should be considered estimates and not relied on as legal documents or descriptions.*