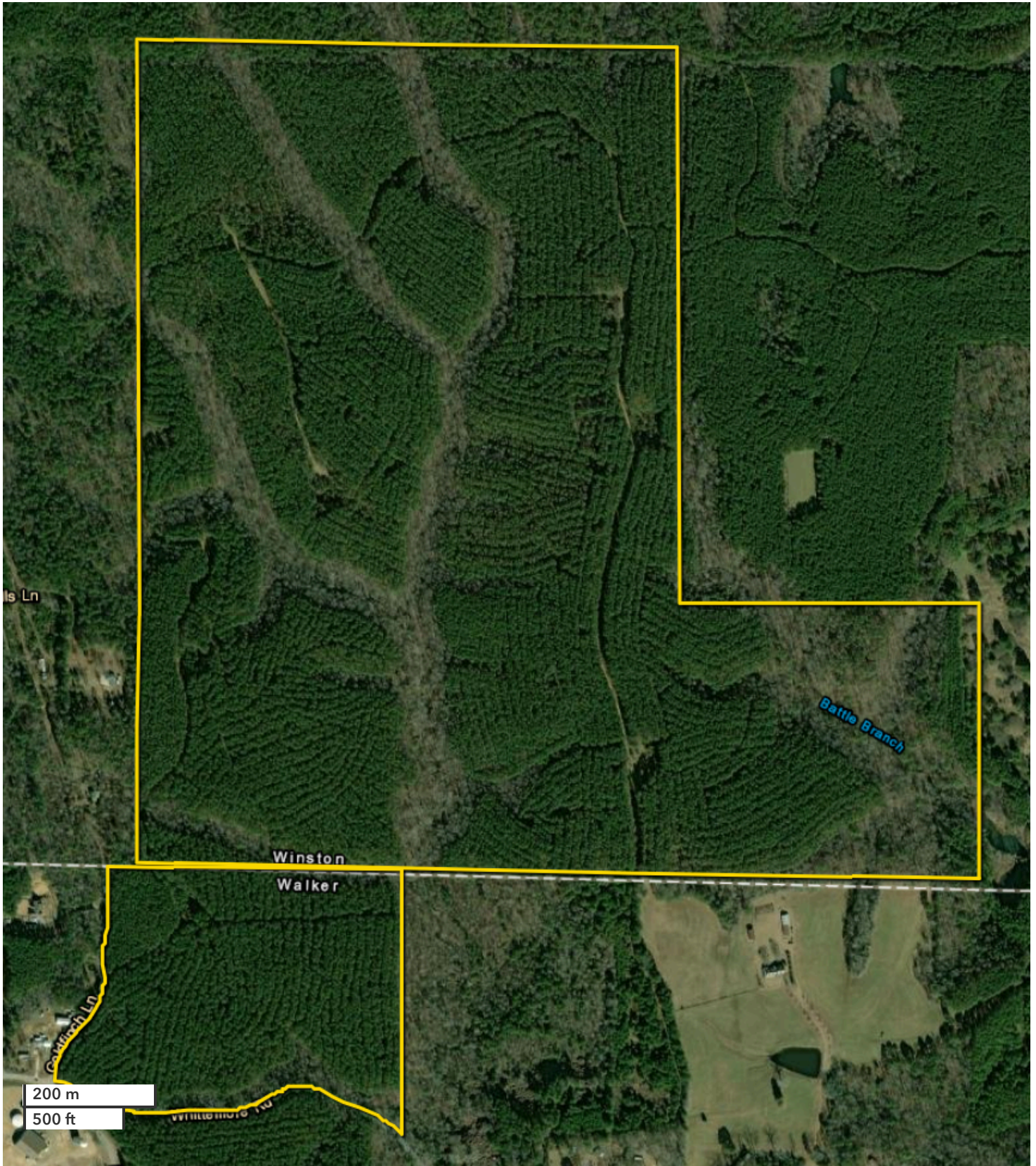




CHRIS PADGETT  
Land Professional  
cpadgett@nationalland.com  
Mobile: 205-276-2446  
Office: 205-551-8432  
Fax: 864-331-1610

Whittemore Road Hunting/Recreational/Development Tract  
Walker County, AL  
323 +/- Acres



*All boundary lines noted in pictures, aerials or maps should be considered estimates and not relied on as legal documents or descriptions.*