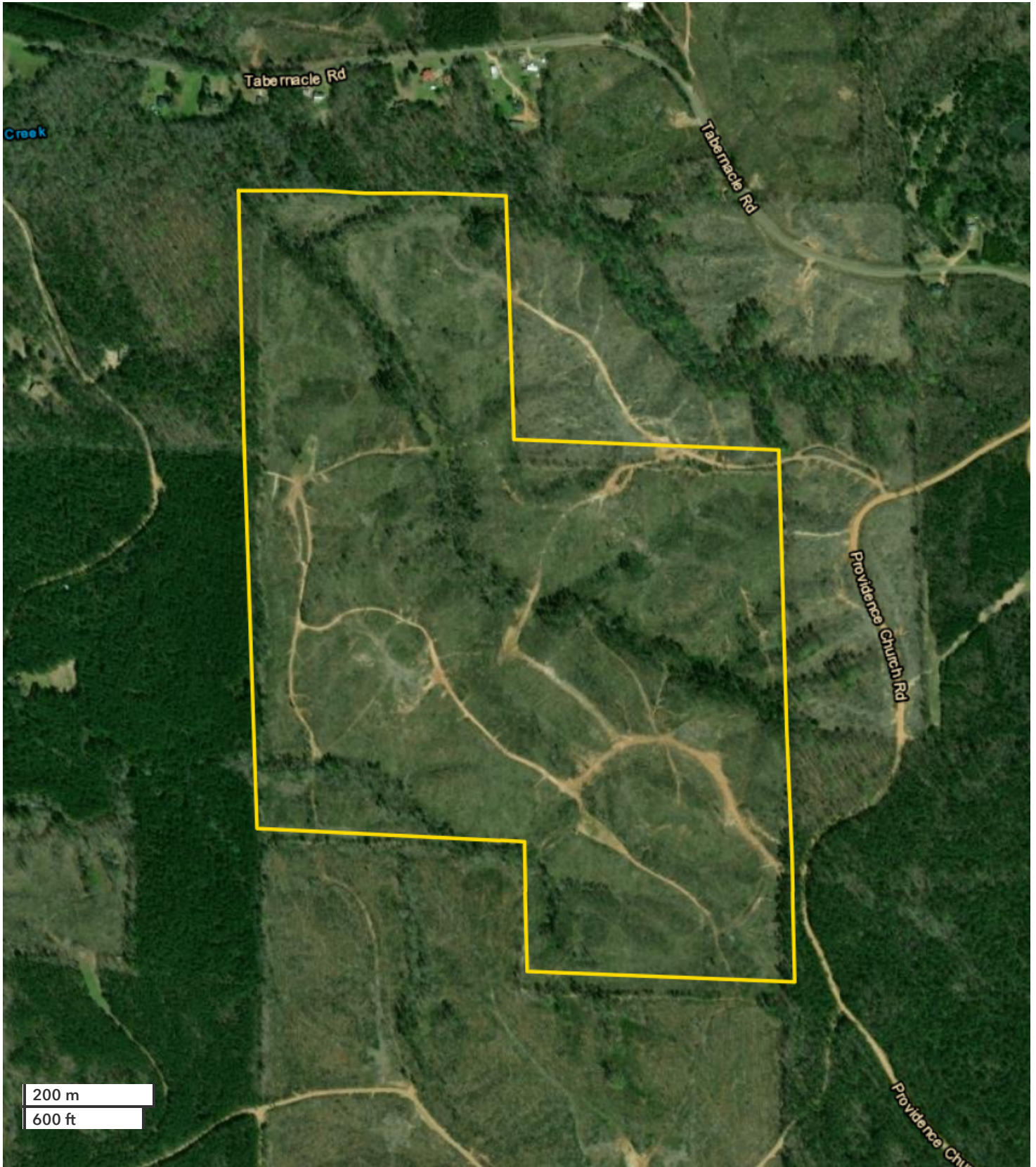




JOSH HIXON
Land Professional, Registered
864-331-1610
Jhixon@nationalland.com
205-361-0946
205-343-2110

ALLAN HIXON
Land Professional, Registered
205-343-2144
Ahixon@nationalland.com
205-799-1422
205-343-2110

Little Magby Creek Recreation & Timber Investment
Pickens County, AL
180 +/- Acres



All boundary lines noted in pictures, aerials or maps should be considered estimates and not relied on as legal documents or descriptions.