



Palmyra Farm & Fish

285.16 +/- Acres | Otoe County, NE | \$2,900,000



National Land Realty
PO Box 164
Blair, NE 68008
NationalLand.com



Ryan Schroeter
Office: 402-965-0880
Cell: 402-699-4250
RRS@NationalLand.com

The above information is from sources deemed reliable, however the accuracy is not guaranteed.
National Land Realty assumes no liability for error, omissions or investment results.



PROPERTY SUMMARY

Discover a rare opportunity to own 285 +/- acres in Otoe County, NE. This versatile property offers a combination of income producing farmland, recreational opportunities and valuable improvements, making it ideal for investors, outdoor enthusiasts, and families. This property features: 174 +/- tillable acres currently cash rented for 2025. A 60 x 40 outbuilding with concrete floors, electricity, 2 radiant heaters, and 2 large overhead doors. Plus, a 32 x 28 garage, plus additional outbuildings for storage and a 10,000 +/- bushel grain bin. The 38 +/- acre NRD lake: Ideal for year-round recreation with boating, kayaking, canoeing, and excellent bass and crappie fishing. Pit blind with underground electric & well; Strategically located on the northeast side of the lake for prime waterfowl hunting. Plus, Whitetail deer and Turkey Hunting opportunities throughout the property. This property is truly a year-round recreational retreat with the added benefit of steady farm rental income.



ACREAGE BREAKDOWN

285.16 total assessed acres with
175 +/- tillable acres with a 38 +/-
stocked lake.

PARCEL #/ID

003229500

ADDRESS

1287 D Road
Palmyra, NE 68418

LOCATION

Starting at Palmyra, NE head East
1 mile on Hwy 2. Turn North on
County Road 10 for 2 miles, then
East on County Road D for 1.5
miles to the property.

TAXES

\$10,064/year (2024)

PROPERTY HIGHLIGHTS

- 174 +/- tillable acres currently cash rented for the 2025 farming season
- A 60 x 40 metal outbuilding with concrete floors, electricity, two radiant heaters, and two large overhead doors. Plus, a 32 x 28 garage, plus additional older outbuildings for storage and a 10,000 +/- bushel grain bin.
- The 38 +/- acre NRD lake: Ideal for year-round recreation with boating, kayaking, canoeing, and excellent bass and crappie fishing.
- Pit blind with underground electric & well; Strategically located on the northeast side of the lake for prime waterfowl hunting. Plus, exceptional Whitetail deer and Turkey Hunting opportunities throughout the property.
- This property is truly a year-round recreational retreat with the added benefit of steady farm rental income. Whether you're looking for a weekend getaway, a family retreat, or a solid long-term investment, this Otoe County gem checks all the boxes.



ESTIMATED INCOME

\$36,000

nationalland.com/listing/palmrya-farm-fish



COMMERCIAL PROPERTY HIGHLIGHTS

Zoning

Agricultural

Listing ID#

3252246



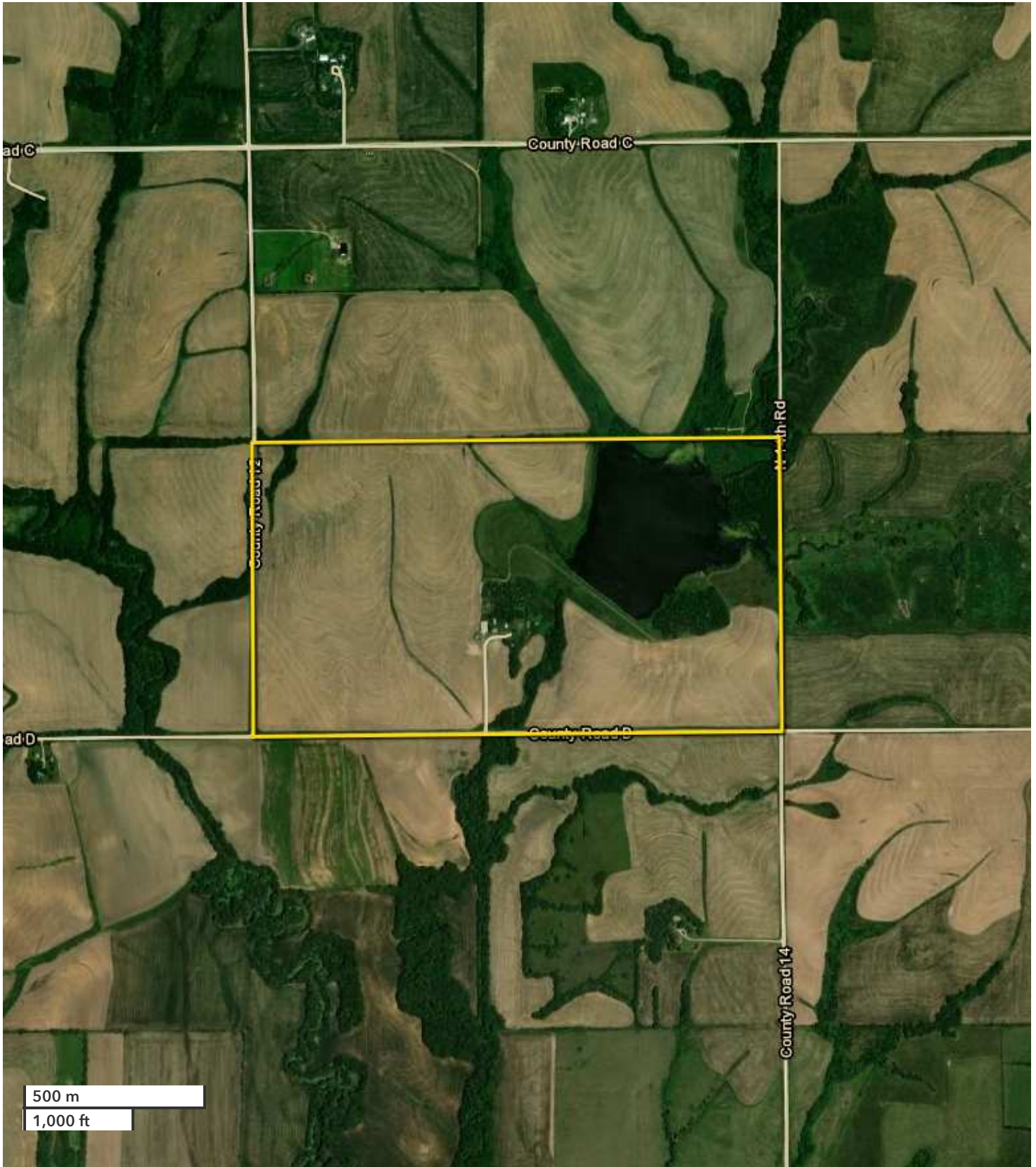


National Land Realty
PO Box 164
Blair, NE 68008
NationalLand.com



Ryan Schroeter
Office: 402-965-0880
Cell: 402-699-4250
RRS@NationalLand.com

The above information is from sources deemed reliable, however the accuracy is not guaranteed.
National Land Realty assumes no liability for error, omissions or investment results.

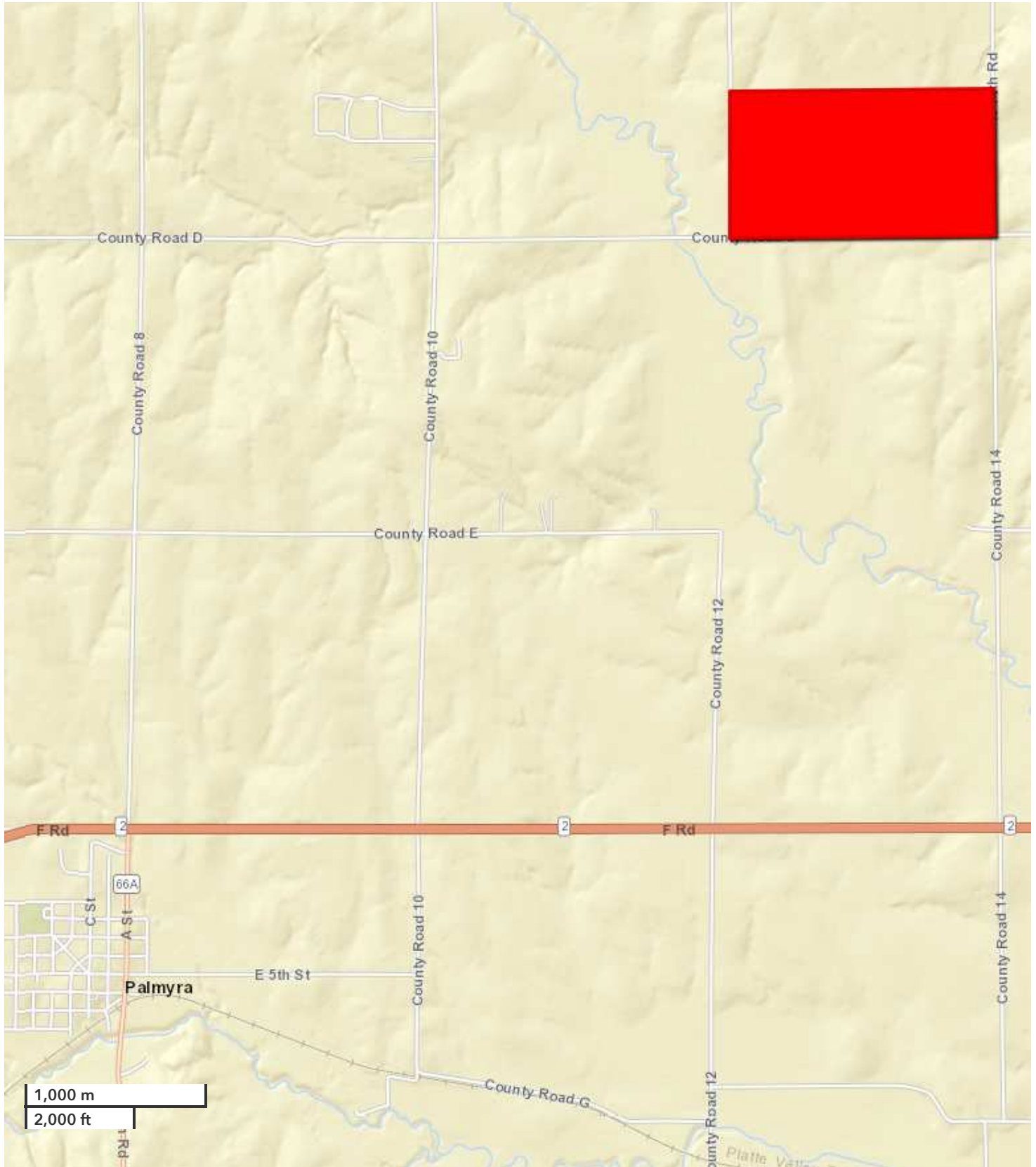


All boundary lines noted in pictures, aerals or maps should be considered estimates and not relied on as legal documents or descriptions.

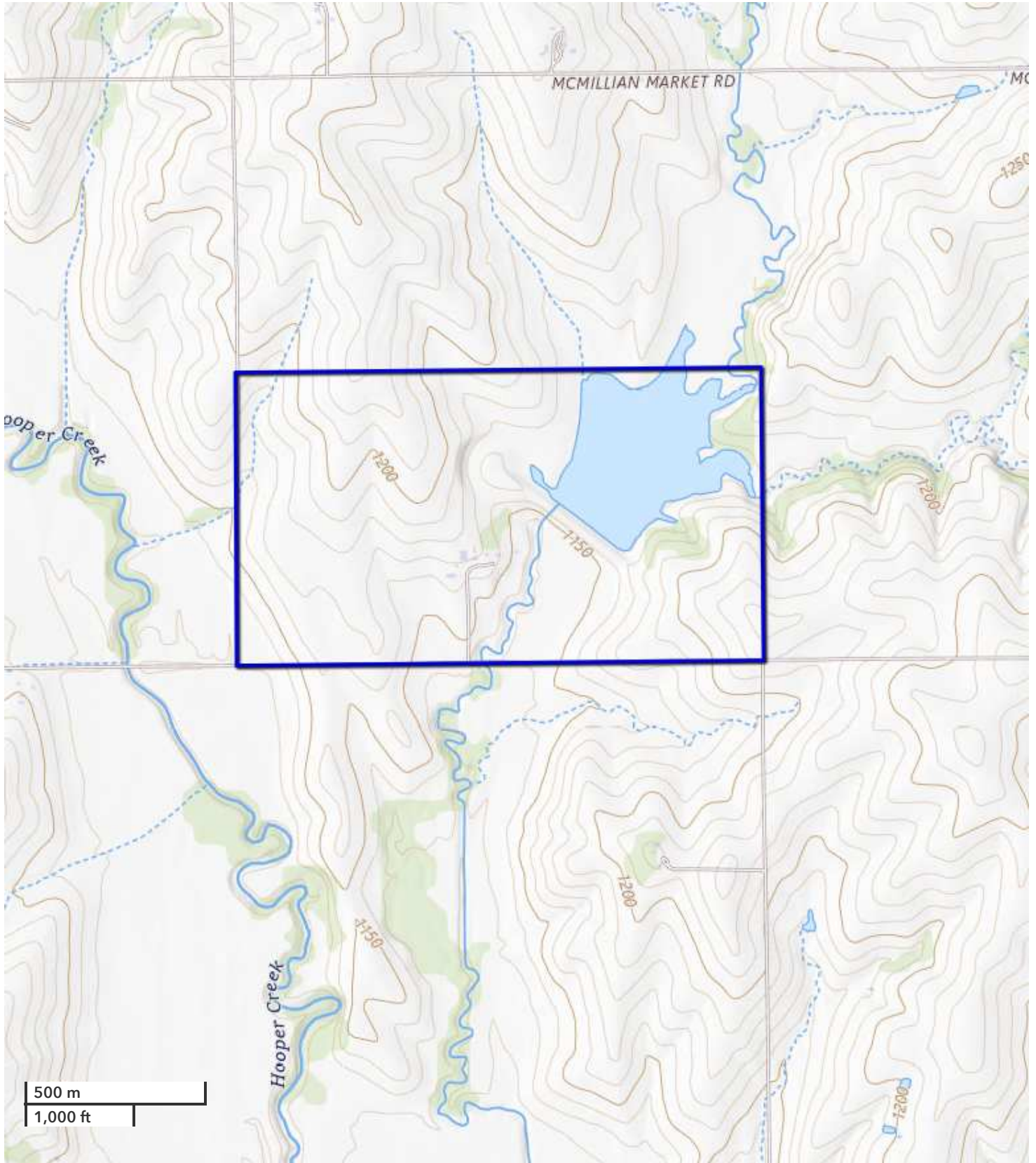


RYAN SCHROETER, ALC
Land Broker
rrs@nationalland.com
Mobile: 402-699-4250
Office: 402-965-0880

Palmrya Farm & Fish
Otoe County, NE
285.16 +/- Acres
\$2,900,000



All boundary lines noted in pictures, aerials or maps should be considered estimates and not relied on as legal documents or descriptions.



All boundary lines noted in pictures, aerials or maps should be considered estimates and not relied on as legal documents or descriptions.



**NATIONAL
LAND
REALTY®**



The above information is from sources deemed reliable, however the accuracy is not guaranteed.
National Land Realty assumes no liability for error, omissions or investment results.