



Elk Ridge Subdivision, Blair NE

11.64 +/- Acres | Washington County, NE | \$750,000



National Land Realty
PO Box 164
Blair, NE 68008
NationalLand.com



Ryan Schroeter
Office: 402-965-0880
Cell: 402-699-4250
RRS@NationalLand.com

The above information is from sources deemed reliable, however the accuracy is not guaranteed.
National Land Realty assumes no liability for error, omissions or investment results.



PROPERTY SUMMARY

National Land is excited to present an exceptional opportunity to acquire 11.6+/- acres on the northeast edge of Blair, NE. This prime parcel has been thoughtfully developed into 30 residential lots, each offering stunning views of the Missouri River Valley. Located just 20 miles north of Omaha, Blair is a charming community that provides the perfect blend of small-town tranquility and proximity to the city's amenities. The Elk Ridge subdivision has already been approved by the City of Blair, offering a seamless transition for the new owner. As part of the development process, the buyer will need to enter into a Developer's Agreement with the City of Blair to complete the final stages of development. This is an incredible opportunity for builders and developers looking to create a sought-after residential community in one of the fastest-growing areas in the region. For more details or to schedule a tour, please contact Ryan Schroeter with National Land.



ACREAGE BREAKDOWN

11.647 +/- acres subdivided into
30 residential lots.

ADDRESS

270 East Garfield Circle
Blair, NE 68008

TAXES

\$8,973/year (2024)

PARCEL #/ID

890021966

LOCATION

30 lot subdivision located on the
Northeast corner of Blair, NE.

PROPERTY HIGHLIGHTS

- This prime parcel has been thoughtfully developed into 30 residential lots, each offering stunning views of the Missouri River Valley
- The Elk Ridge subdivision has already been approved by the City of Blair, offering a seamless transition for the new owner.



nationalland.com/listing/elk-ridge-subdivision-blair-ne



COMMERCIAL PROPERTY HIGHLIGHTS

Zoning

Residential

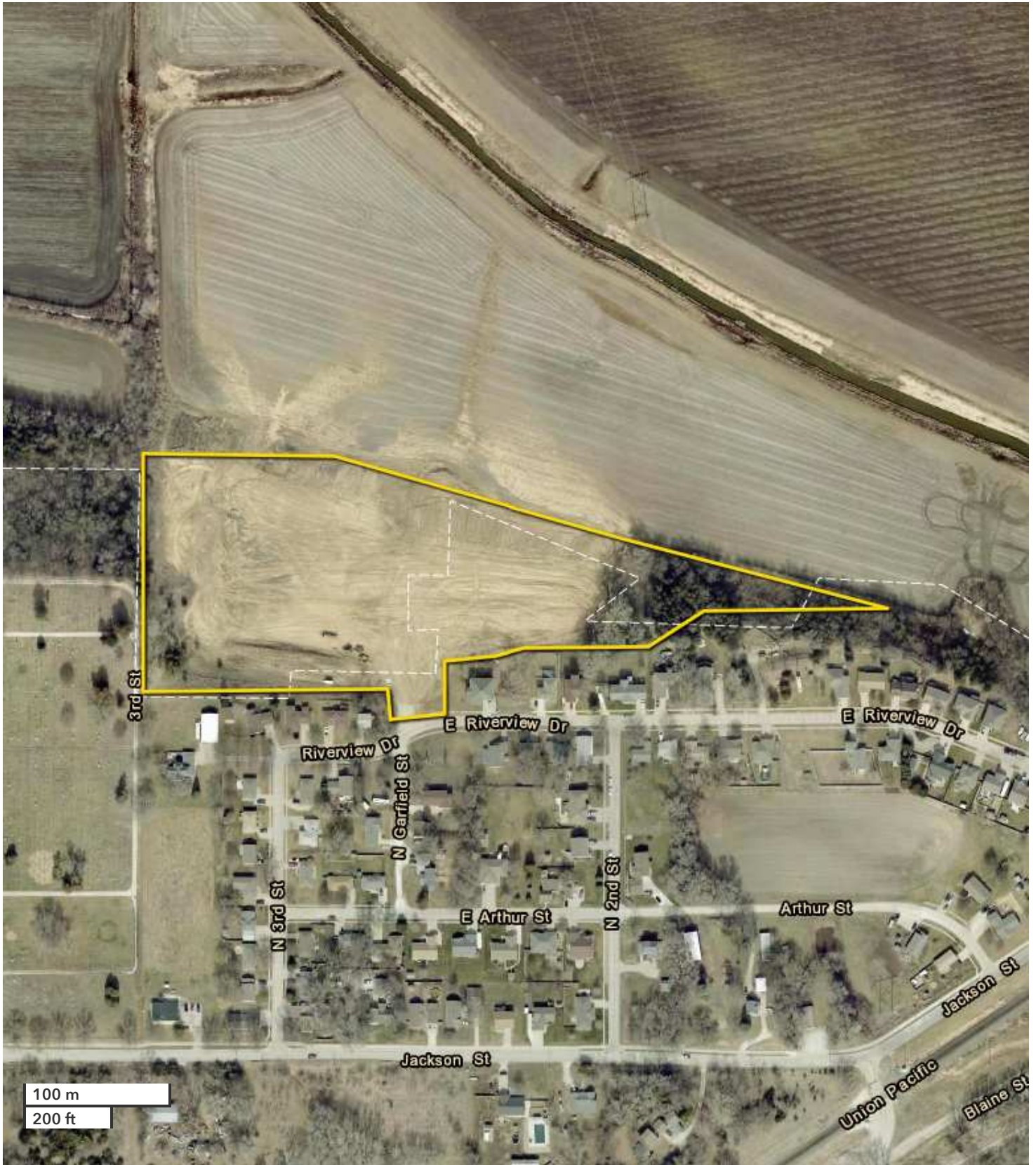
Listing ID#

3148762

Future Land Use

Residential





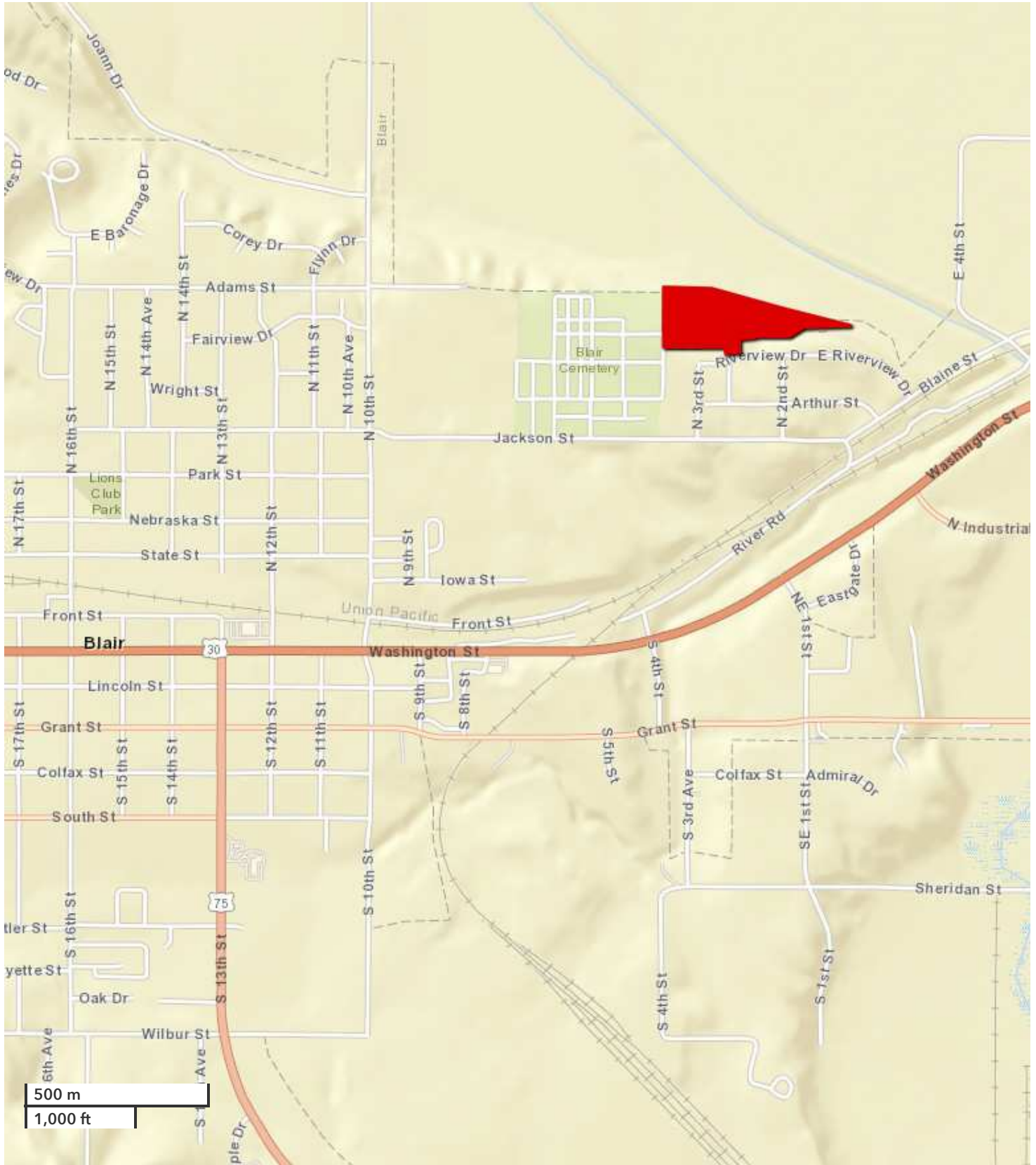
All boundary lines noted in pictures, aerials or maps should be considered estimates and not relied on as legal documents or descriptions.



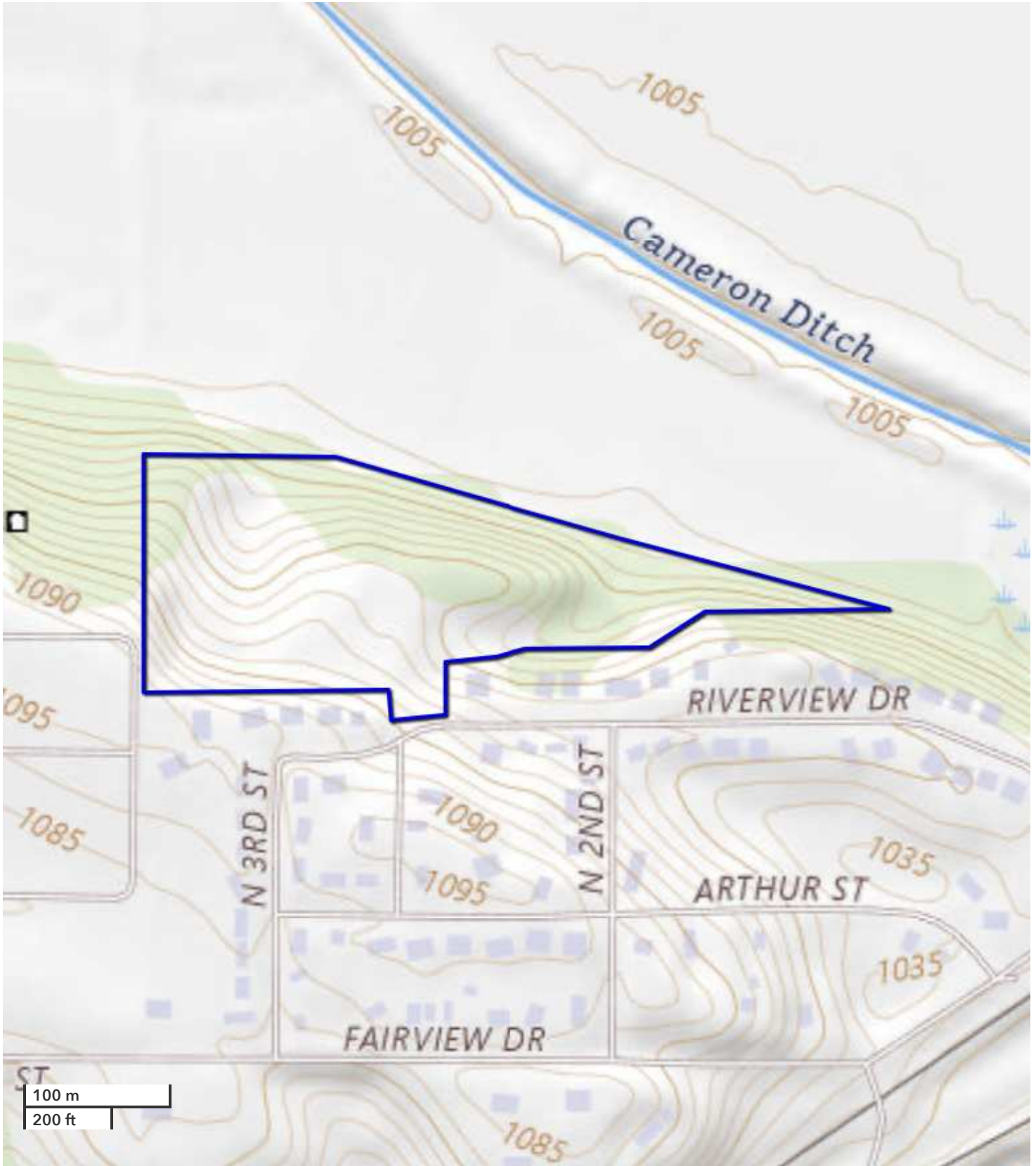
RYAN SCHROETER, ALC
Land Broker

RRS@NationalLand.com
402-699-4250
402-965-0880

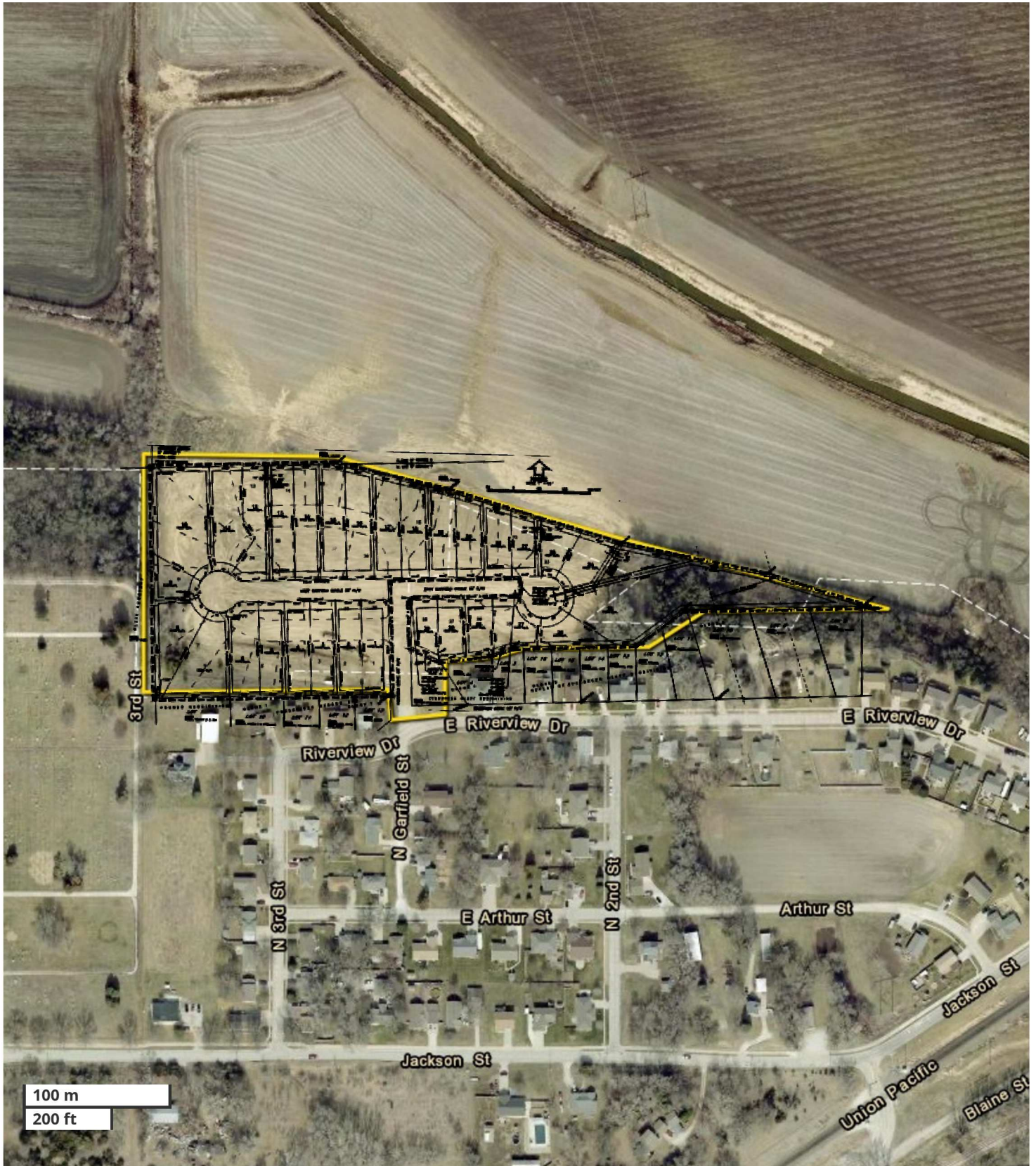
Elk Ridge Subdivision, Blair NE
Washington County, NE
11.64 +/- Acres
\$990,000



All boundary lines noted in pictures, aerals or maps should be considered estimates and not relied on as legal documents or descriptions.



All boundary lines noted in pictures, aerials or maps should be considered estimates and not relied on as legal documents or descriptions.



All boundary lines noted in pictures, aerials or maps should be considered estimates and not relied on as legal documents or descriptions.



**NATIONAL
LAND
REALTY®**

The above information is from sources deemed reliable, however the accuracy is not guaranteed.
National Land Realty assumes no liability for error, omissions or investment results.