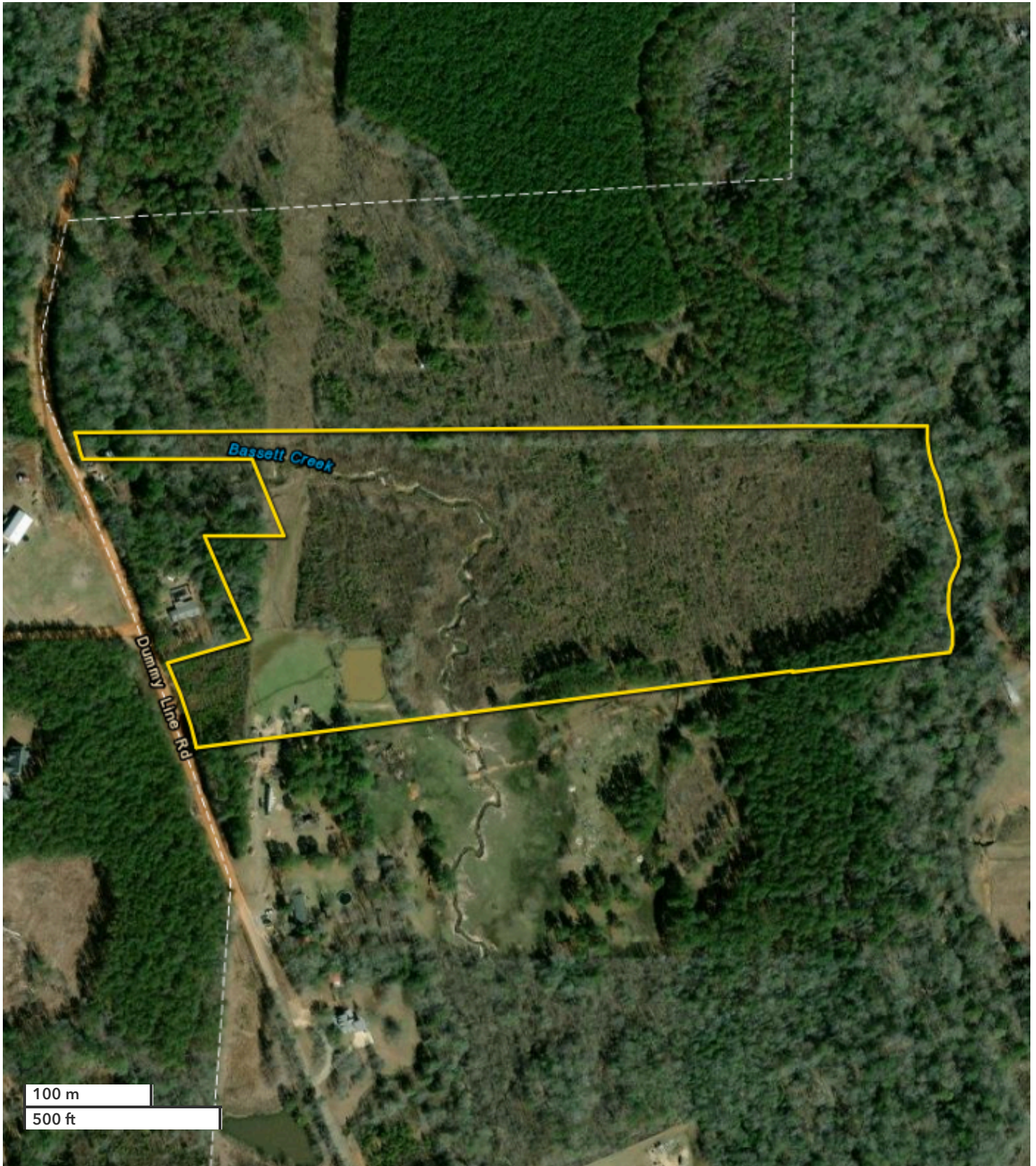




TOM LEATHERBURY, JR.
Land Professional
tleatherbury@nationallandrealty.com
Mobile: 251-422-5643
Office: 251-732-6159
Fax: 888-672-1810

Thomasville Bassett Creek Dummy Line Road Homesite & Recreationa
Clarke County, AL
29 +/- Acres



All boundary lines noted in pictures, aerals or maps should be considered estimates and not relied on as legal documents or descriptions.