



## Milton Hunting & Homesite Acreage

36 +/- Acres | Santa Rosa County, FL | \$235,000



**National Land Realty**  
9 N. Conception St.  
Mobile, AL 36602  
[NationalLand.com](http://NationalLand.com)



**Chandler Guy**  
Office: 334-947-1684  
Cell: 850-503-1307  
Fax: 888-672-1810  
[Cguy@NationalLand.com](mailto:Cguy@NationalLand.com)

The above information is from sources deemed reliable, however the accuracy is not guaranteed.  
National Land Realty assumes no liability for error, omissions or investment results.





## PROPERTY SUMMARY

This property consists of acreage divided between two tracts on opposite sides of I-10 in Milton, Florida, along Robinson Point Road.

The northern tract offers 10 +/- acres zoned AG-RR with 170 +/- feet of frontage along the I-10 overpass barrier. The southern tract is comprised of 26 +/- acres zoned RR1, identified as 100% wetlands via a wetlands delineation report, with 675 +/- feet of direct frontage on Robinson Point Road and an additional 688 +/- feet of frontage along the I-10 overpass barrier.



**ACREAGE BREAKDOWN**

Contact agent for acreage breakdown.

**ADDRESS**

0 Robinson Point Road  
Milton, FL 32583

**TAXES**

\$56/year (2024)

**PARCEL #/ID**

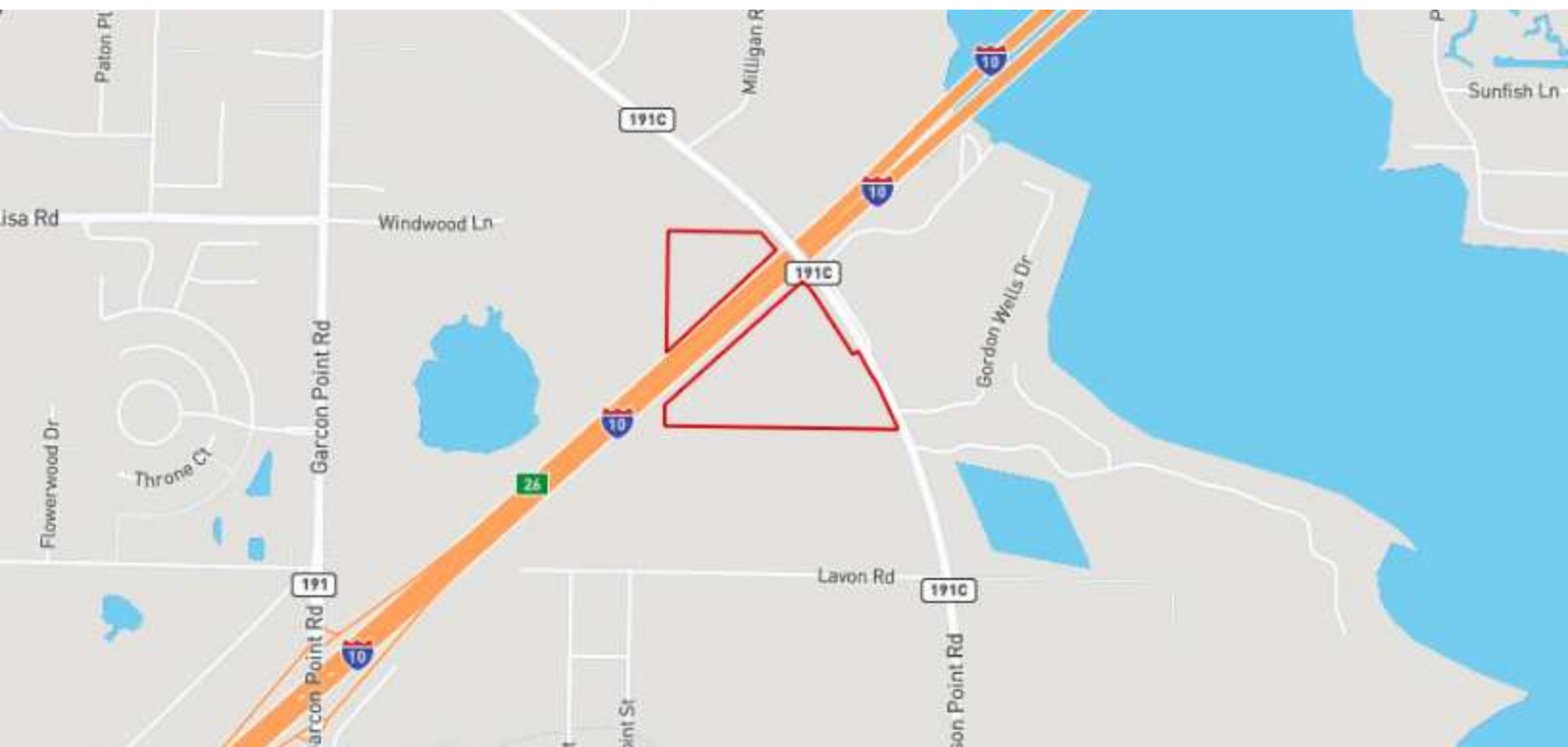
23-1N-28-0000-01202-0000

**LOCATION**

Contact agent for directions.

## PROPERTY HIGHLIGHTS

- Acreage on each side of I-10 in Milton, Florida
- Completely wooded and untouched
- Possible homesite or development potential

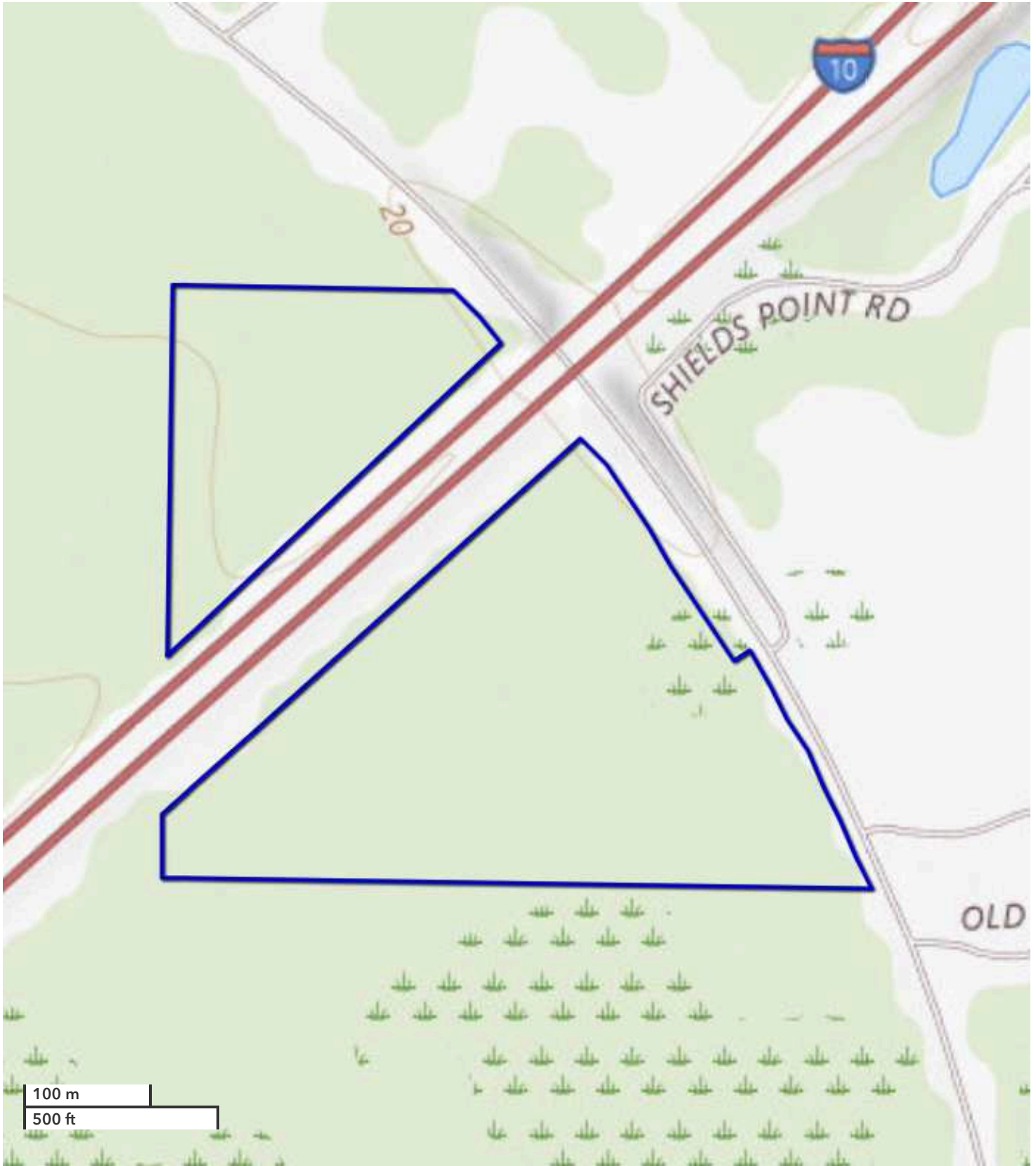






*All boundary lines noted in pictures, aerials or maps should be considered estimates and not relied on as legal documents or descriptions.*





*All boundary lines noted in pictures, aerials or maps should be considered estimates and not relied on as legal documents or descriptions.*

## COMMERCIAL PROPERTY HIGHLIGHTS

### Zoning

AG-RR and RR1

### Listing ID#

3254043







**National Land Realty**  
9 N. Conception St.  
Mobile, AL 36602  
[NationalLand.com](http://NationalLand.com)



**Chandler Guy**  
Office: 334-947-1684  
Cell: 850-503-1307  
Fax: 888-672-1810  
[Cguy@NationalLand.com](mailto:Cguy@NationalLand.com)

The above information is from sources deemed reliable, however the accuracy is not guaranteed.  
National Land Realty assumes no liability for error, omissions or investment results.