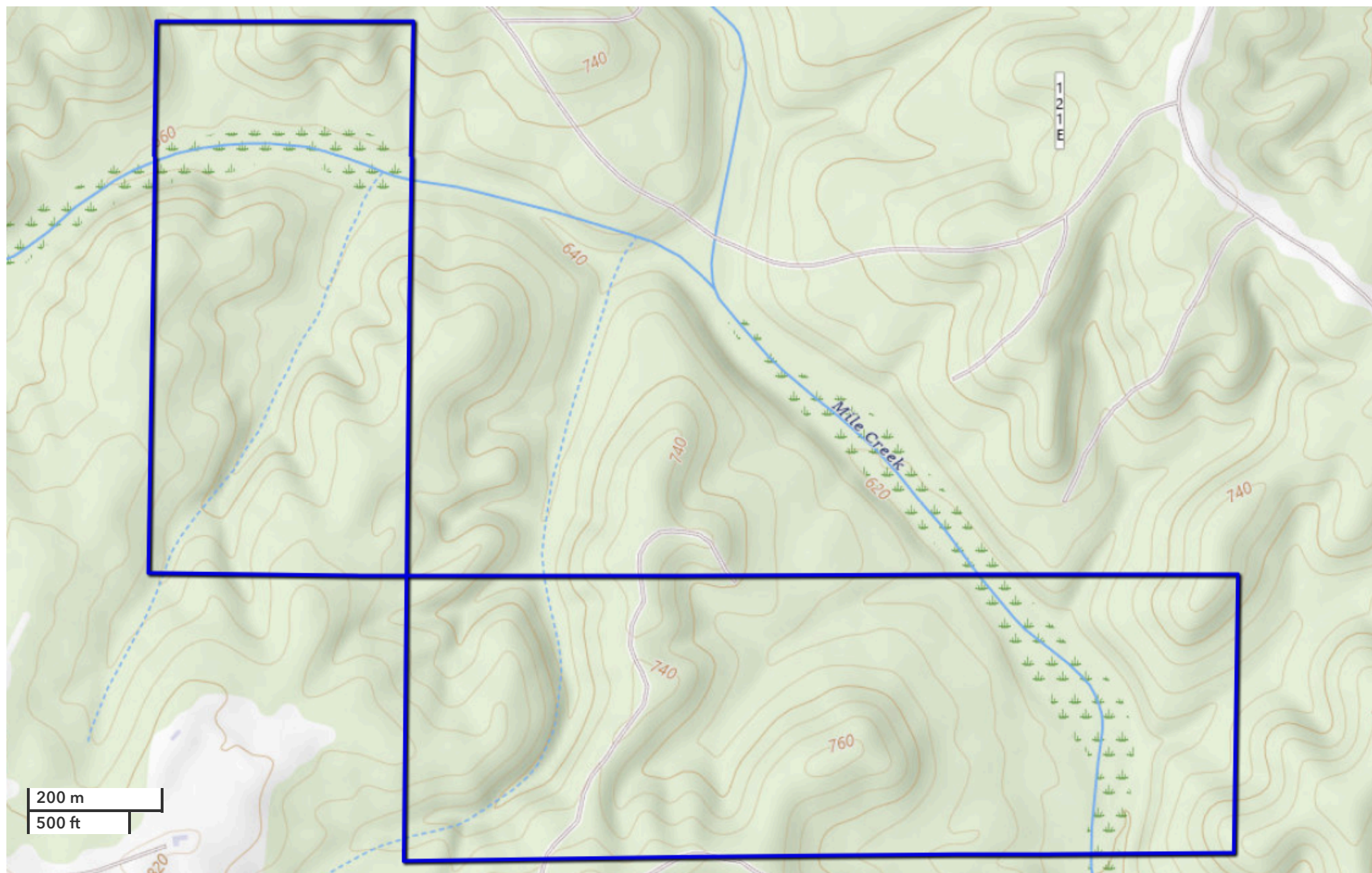




BILLY RYE
Land Professional
brye@nationalland.com
Mobile: 256-810-6876
Office: 256-459-0745
Fax: 864-331-1610

Bankhead Recreation and Timber Property.
Winston County, AL
200 +/- Acres



All boundary lines noted in pictures, aeriels or maps should be considered estimates and not relied on as legal documents or descriptions.