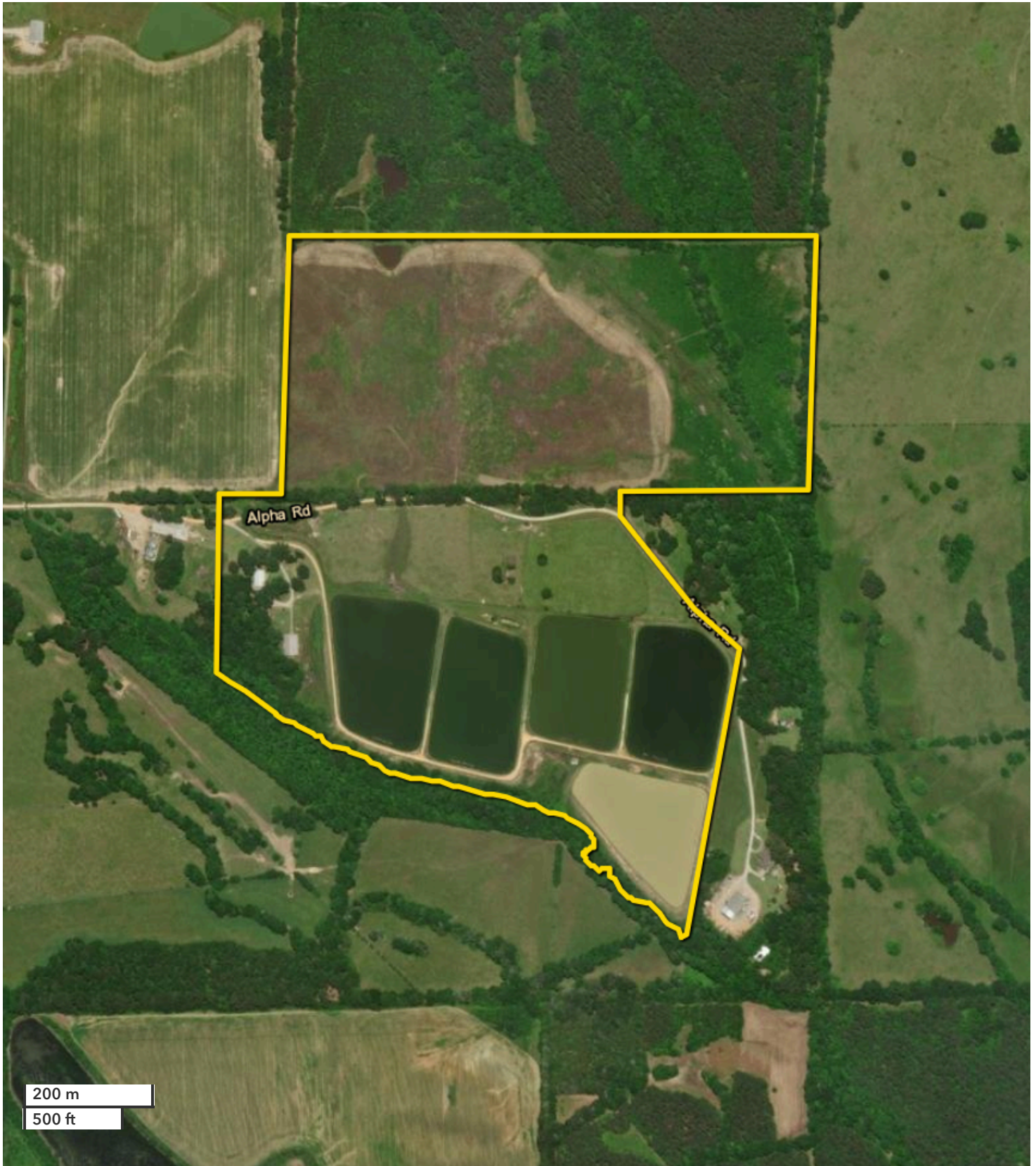




JASON ABRAMS
Land Professional
jabrams@nationalland.com
Mobile: 334-216-0690
Office: 334-489-5876
Fax: 888-672-1810

MITCHELL JONES
Land Professional
mjones@nationalland.com
Mobile: 205-529-5500
Office: 205-551-8982
Fax: 888-672-1810

Hunting, Recreational, Residential, Income Producing
Perry County, AL
160 +/- Acres



All boundary lines noted in pictures, aerials or maps should be considered estimates and not relied on as legal documents or descriptions.