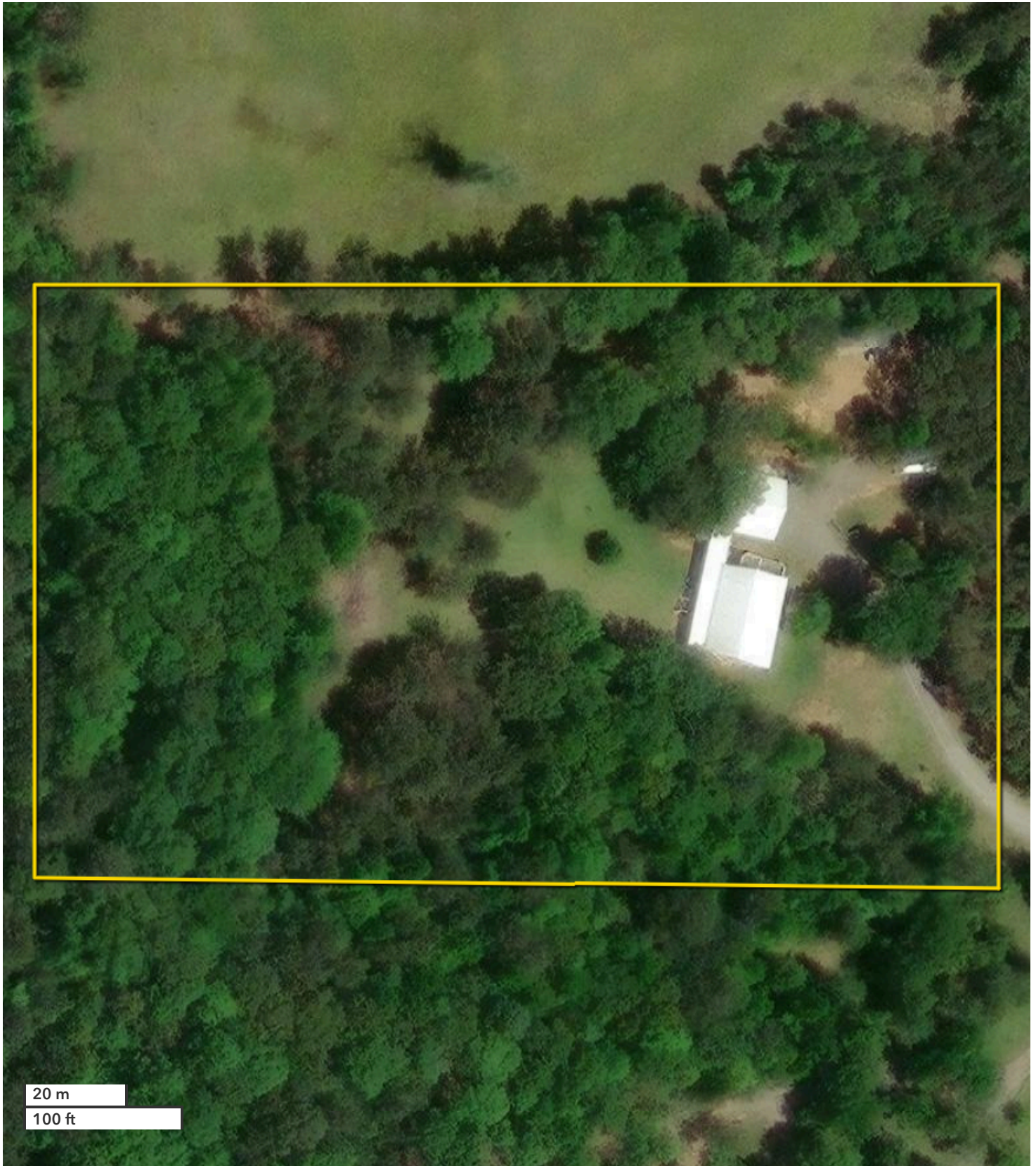




JASON ABRAMS  
Land Professional  
jabrams@nationalland.com  
Mobile: 334-216-0690  
Office: 334-489-5876  
Fax: 888-672-1810

MITCHELL JONES  
Land Professional  
mjones@nationalland.com  
Mobile: 205-529-5500  
Office: 205-551-8982  
Fax: 888-672-1810

212 Leatherwood Drive  
Marengo County, AL  
5 +/- Acres



*All boundary lines noted in pictures, aerials or maps should be considered estimates and not relied on as legal documents or descriptions.*