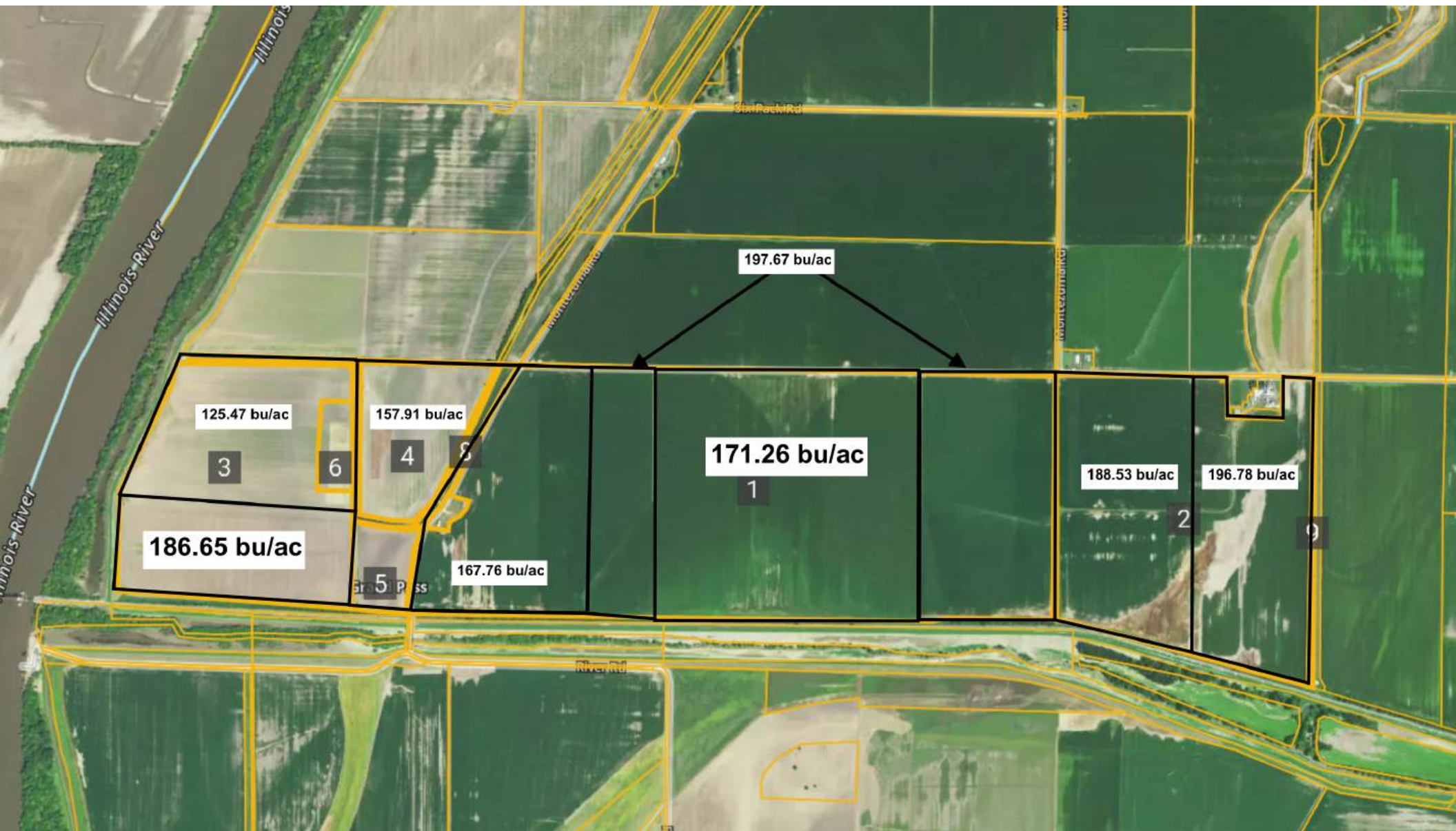


Averages are based on harvest data provide below



Area Harvested: 83.2 ac
Total Yield: 15,691 bu
Wet Weight: 10,809.1 lb/ac

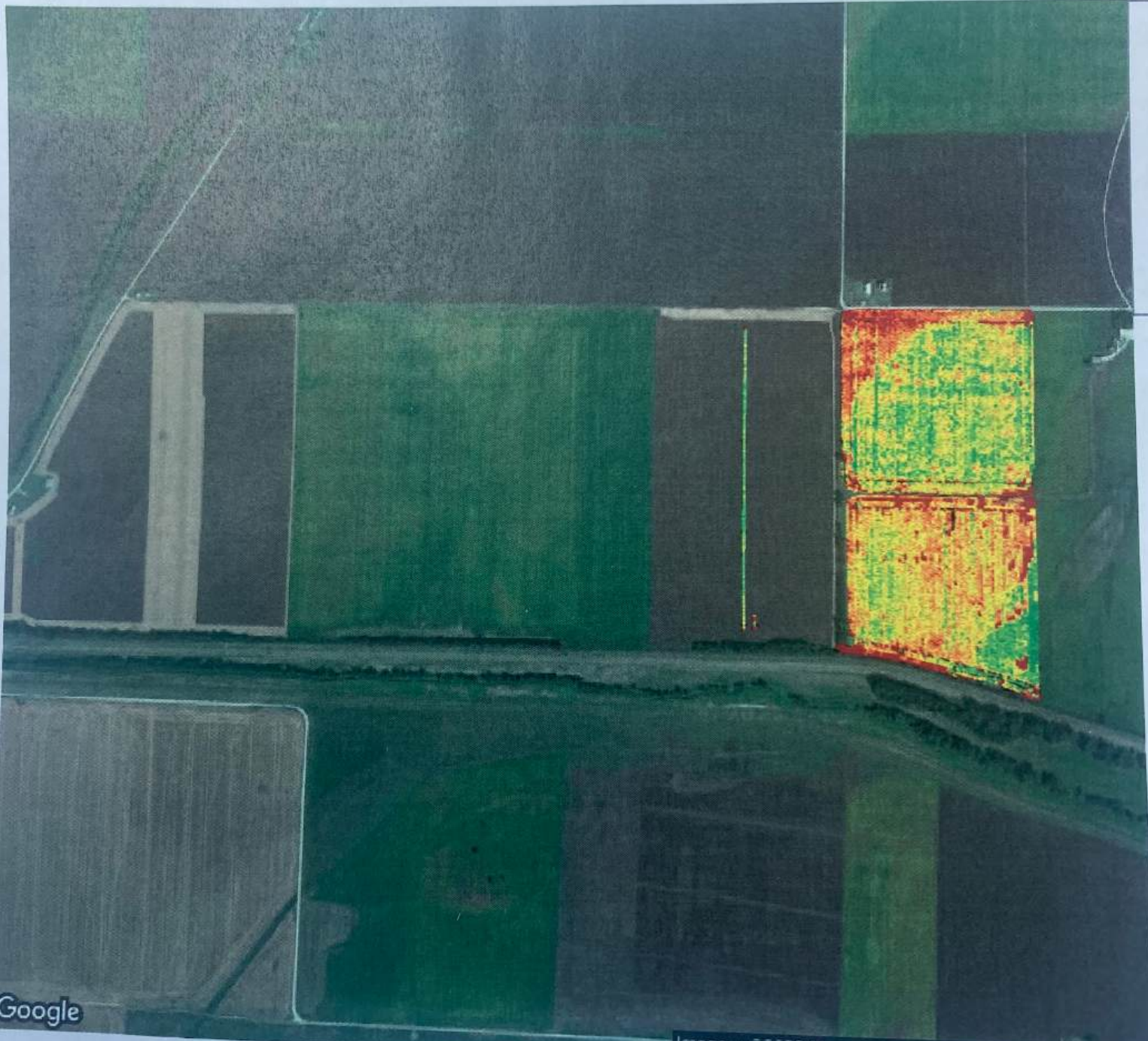
Yield: 188.53 bu/ac
Moisture: 16.7 %
Total Wet Weight: 899,604 lb

Performance

Speed: 3.3 mi/hr
Working Time: 11 hr 4 mins
Throughput (Dry): 1,417.7 bu/hr
Fuel Efficiency: 88.1 bu/gal
Fuel: 16.1 gal/hr

Productivity: 7.5 ac/hr
Total Fuel: 178.1 gal
Throughput (Wet): 81,284.5 lb/hr
Fuel: 2.1 gal/ac

Map



Google

Imagery ©2023 Maxar Technologies, USDA/FPAC/GEO

Equipment

Work Totals

Area Harvested: 116 ac
Total Yield: 22,934 bu
Wet Weight: 11,568.5 lb/ac

Yield: 197.67 bu/ac
Moisture: 18.3 %
Total Wet Weight: 1,342,234 lb

Performance

Speed: 3.2 mi/hr
Working Time: 16 hr 10 mins
Throughput (Dry): 1,417.3 bu/hr
Fuel Efficiency: 90.8 bu/gal
Fuel: 15.6 gal/hr

Productivity: 7.2 ac/hr
Total Fuel: 252.7 gal
Throughput (Wet): 82,945.3 lb/hr
Fuel: 2.2 gal/ac

Map



Work Totals
Area Harvested: 64.3 ac
Total Yield: 10,780 bu
Wet Weight: 9,467.9 lb/ac

Yield: 167.76 bu/ac
Moisture: 14.7 %
Total Wet Weight: 608,373 lb

Performance
Speed: 3.5 mi/hr
Working Time: 7 hr 45 mins
Throughput (Dry): 1,388.7 bu/hr
Fuel Efficiency: 87 bu/gal
Fuel: 16 gal/hr

Productivity: 8.3 ac/hr
Total Fuel: 123.9 gal
Throughput (Wet): 78,372.4 lb/hr
Fuel: 1.9 gal/ac

Map



Work Totals

Area Harvested: 62.4 ac
Total Yield: 7,825 bu
Wet Weight: 7,026.6 lb/ac

Yield: 125.47 bu/ac
Moisture: 13.4 %
Total Wet Weight: 438,206 lb

Performance

Speed: 3.9 mi/hr
Working Time: 6 hr 41 mins
Throughput (Dry): 1,169.1 bu/hr
Fuel Efficiency: 73.3 bu/gal
Fuel: 15.9 gal/hr

Productivity: 9.3 ac/hr
Total Fuel: 106.7 gal
Throughput (Wet): 65,475 lb/hr
Fuel: 1.7 gal/ac

Map



Work Totals

Area Harvested: 80 ac
Total Yield: 15,735 bu
Wet Weight: 11,047 lb/ac

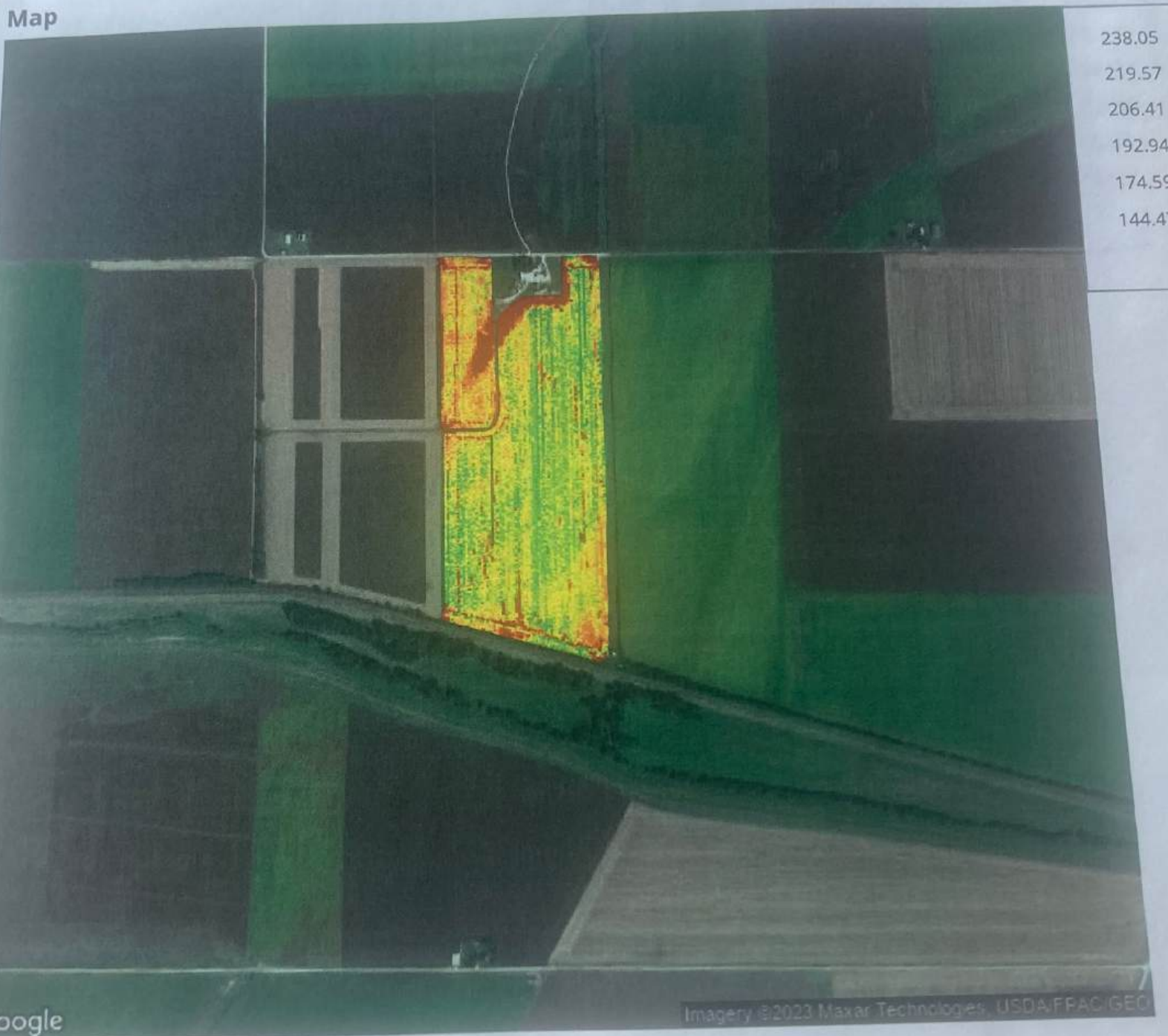
Yield: 196.78 bu/ac
Moisture: 14.3 %
Total Wet Weight: 883,303 lb

Performance

Speed: 3 mi/hr
Working Time: 11 hr 24 mins
Throughput (Dry): 1,372.6 bu/hr
Fuel Efficiency: 86.8 bu/gal
Fuel: 15.8 gal/hr

Productivity: 7 ac/hr
Total Fuel: 180.5 gal
Throughput (Wet): 77,053.2 lb/hr
Fuel: 2.3 gal/ac

Map



Work Totals

Area Harvested: 159.1 ac
Total Yield: 27,241 bu
Wet Weight: 9,597.1 lb/ac

Yield: 171.26 bu/ac
Moisture: 13.2 %
Total Wet Weight: 1,526,502 lb

Performance

Speed: 3.2 mi/hr
Working Time: 20 hr 43 mins
Throughput (Dry): 1,310.9 bu/hr
Fuel Efficiency: 84 bu/gal
Fuel: 15.6 gal/hr

Productivity: 7.7 ac/hr
Total Fuel: 323.3 gal
Throughput (Wet): 73,458.4 lb/hr
Fuel: 2 gal/ac

Map



Work Totals

Area Harvested: 50.9 ac
Total Yield: 8,045 bu
Wet Weight: 8,968.6 lb/ac

Yield: 157.91 bu/ac
Moisture: 16 %
Total Wet Weight: 456,934 lb

Performance

Speed: 3.2 mi/hr
Working Time: 7 hr 4 mins
Throughput (Dry): 1,130.6 bu/hr
Fuel Efficiency: 73.3 bu/gal
Fuel: 15.4 gal/hr

Productivity: 7.2 ac/hr
Total Fuel: 109.1 gal
Throughput (Wet): 64,215.9 lb/hr
Fuel: 2.1 gal/ac

Map



Work Totals

Area Harvested: 52.3 ac
Total Yield: 9,701 bu
Wet Weight: 10,553.4 lb/ac

Yield: 185.65 bu/ac
Moisture: 15.9 %
Total Wet Weight: 551,460 lb

Performance

Speed: 3 mi/hr
Working Time: 7 hr 23 mins
Throughput (Dry): 1,303.7 bu/hr
Fuel Efficiency: 83 bu/gal
Fuel: 15.7 gal/hr

Productivity: 7.1 ac/hr
Total Fuel: 116.1 gal
Throughput (Wet): 74,113.5 lb/hr
Fuel: 2.2 gal/ac

Map

