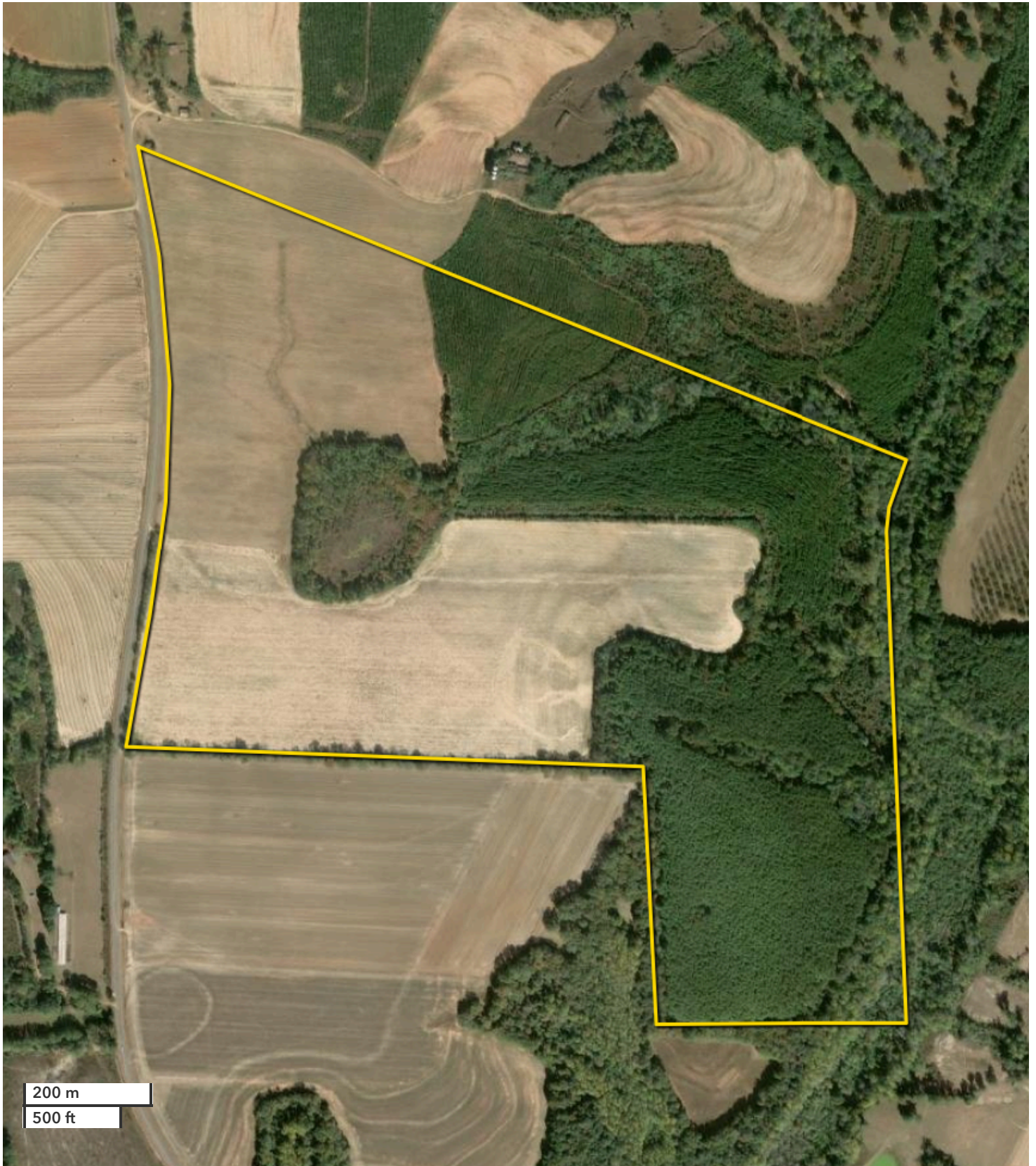




WILLIAM SIMMONS  
Land Professional  
wsimmons@nationalland.com  
Mobile: 334-618-5066  
Office: 334-489-5897  
Fax: 888-672-1810

Farm, Ranch, and Timber Property  
Henry County, AL  
270 +/- Acres



*All boundary lines noted in pictures, aerials or maps should be considered estimates and not relied on as legal documents or descriptions.*