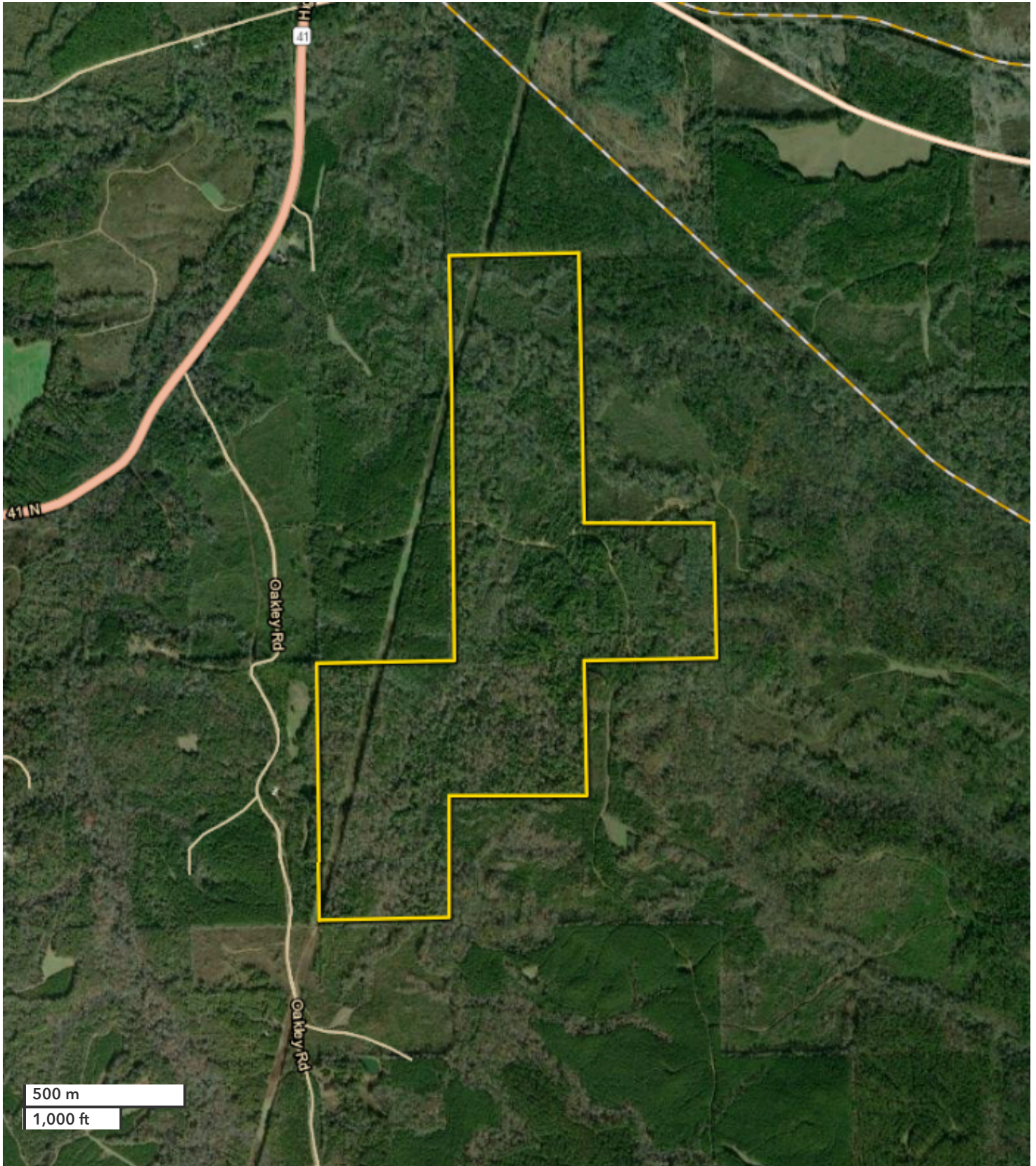




WILL HAIRSTON  
Land Professional  
whairston@nationalland.com  
Mobile: 334-349-2001  
Office: 251-551-7945  
Fax: 888-672-1810

Monroe County Timber, Creek and Hunting Investment Tract  
Monroe County, AL  
281 +/- Acres



*All boundary lines noted in pictures, aerials or maps should be considered estimates and not relied on as legal documents or descriptions.*