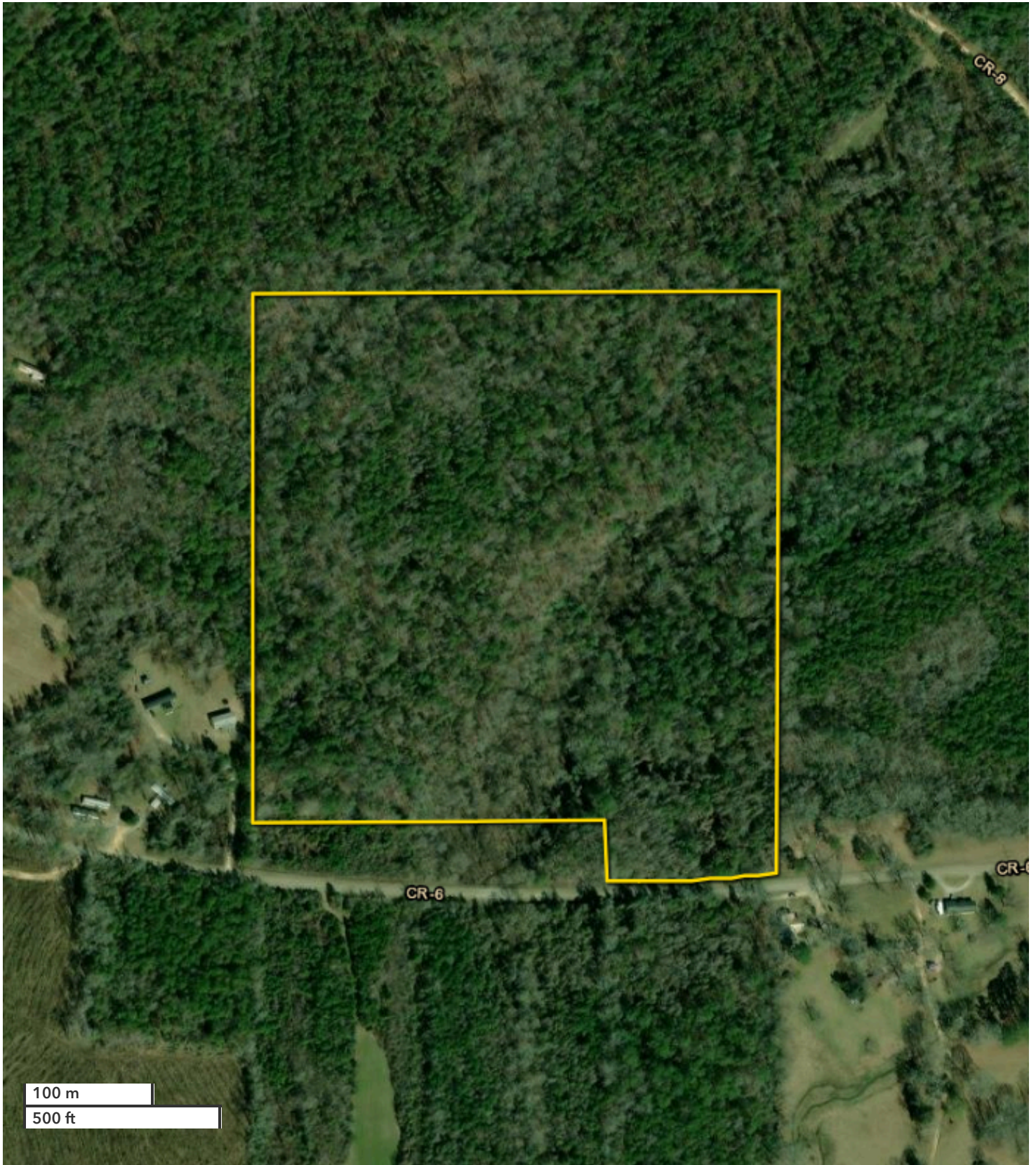




TOM LEATHERBURY, JR.
Land Professional
tleatherbury@nationalland.com
Mobile: 251-422-5643
Office: 251-732-6159
Fax: 888-672-1810

CLINT FLOWERS, ALC
Partner
cflowers@nationalland.com
Mobile: 251-387-0787
Office: 251-572-7366

Sweet Water Mill Creek CR-6 Homesite, Hunting & T
Marengo County, AL
43 +/- Acres



All boundary lines noted in pictures, aerials or maps should be considered estimates and not relied on as legal documents or descriptions.