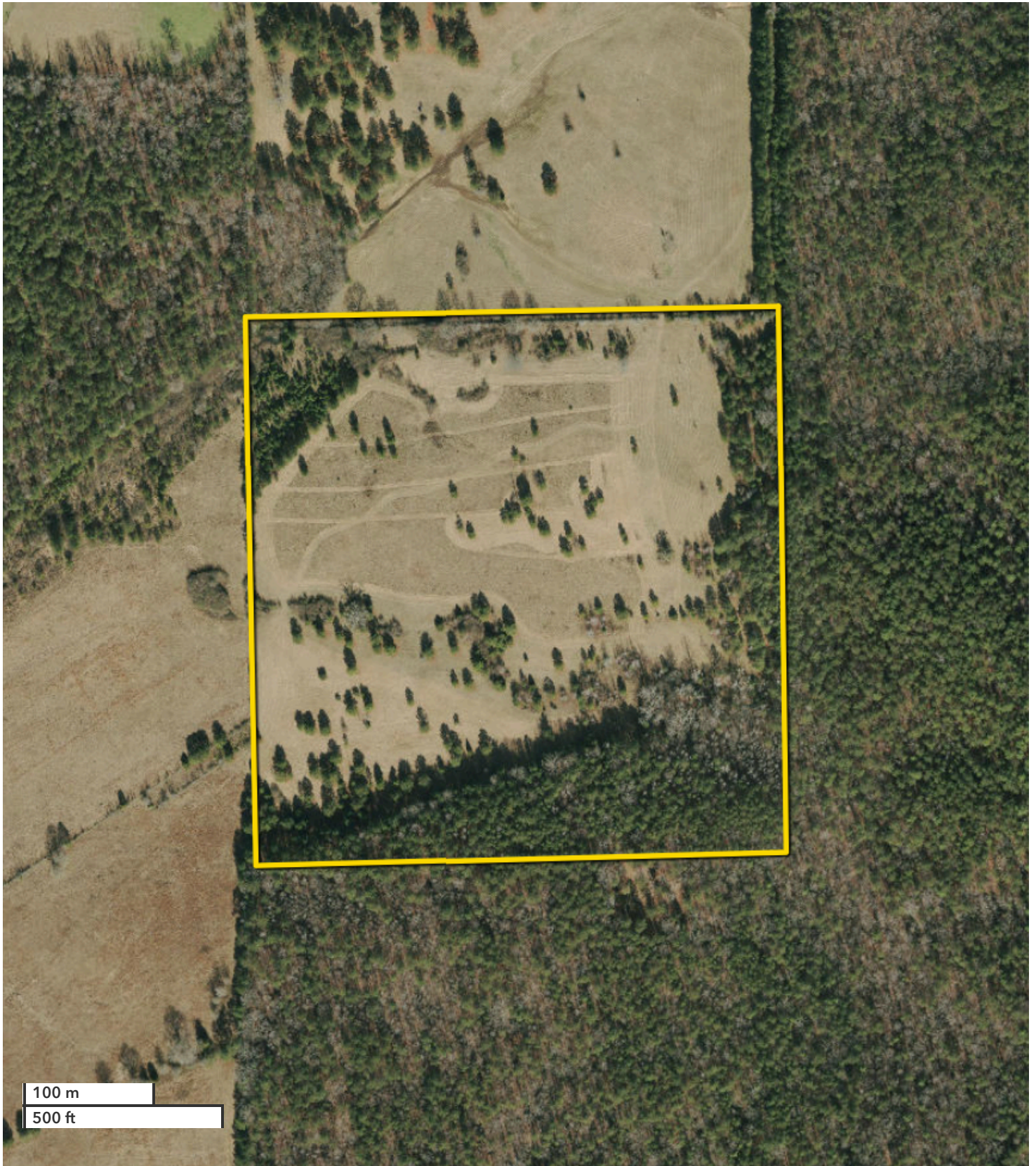




BRETT HARDEN
Land Broker
bharden@nationalland.com
Mobile: 205-835-9922
Office: 205-548-1682
Fax: 864-331-1610

Shelby Homesites & Pasture
Shelby County, AL
40 +/- Acres



All boundary lines noted in pictures, aerials or maps should be considered estimates and not relied on as legal documents or descriptions.