

NEW



Liberty, NE - 80

80 +/- Acres | Pawnee County, NE | \$750,000



National Land Realty
PO Box 164
Blair, NE 68008
NationalLand.com



Ryan Schroeter
Office: 402-965-0880
Cell: 402-699-4250
RRS@NationalLand.com

The above information is from sources deemed reliable, however the accuracy is not guaranteed.
National Land Realty assumes no liability for error, omissions or investment results.



PROPERTY SUMMARY

80 Acres of Prime Farmland for Sale – Pawnee County, NE.

Located 6 miles southeast of Liberty, NE. This property offers a rare opportunity to invest in productive agricultural land with excellent long-term value. Gently rolling terrain, sloping to the south, with Class 2 & 3 soils. Whether you're expanding your current farming operation or looking for a solid ag land investment, this 80-acre parcel delivers productivity, location, and potential.



ACREAGE BREAKDOWN

77.43+/- cropland acres.

ADDRESS

60688 704 Road
Liberty, NE 68381

TAXES

\$1,830/year (2024)

PARCEL #/ID

670001406

LOCATION

Approximately 6 miles Southeast
of Liberty NE. SW corner of 704 RD
& 607 Ave.

PROPERTY HIGHLIGHTS

- 80+/- Total Acres with 77.43+/- Tillable Acres.
- Southward slope enhances drainage and sunlight exposure
- Conveniently located near Liberty, NE – just minutes from the Kansas border



nationalland.com/listing/liberty-ne-80



COMMERCIAL PROPERTY HIGHLIGHTS

Zoning

Agricultural

Listing ID#

3220029





National Land Realty
PO Box 164
Blair, NE 68008
NationalLand.com



Ryan Schroeter
Office: 402-965-0880
Cell: 402-699-4250
RRS@NationalLand.com

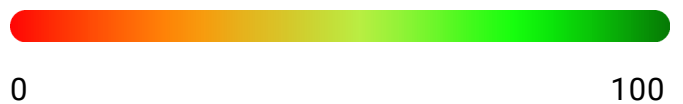
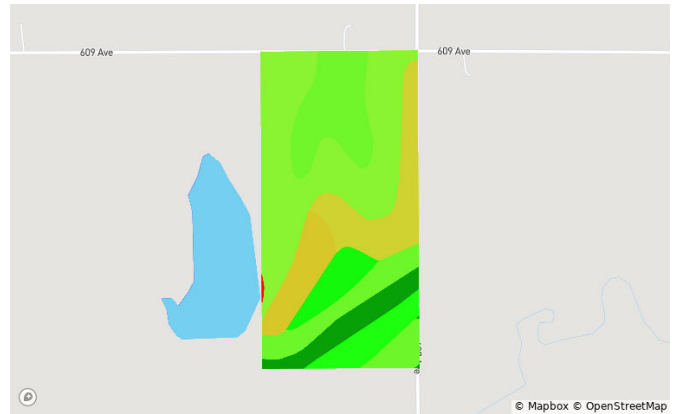
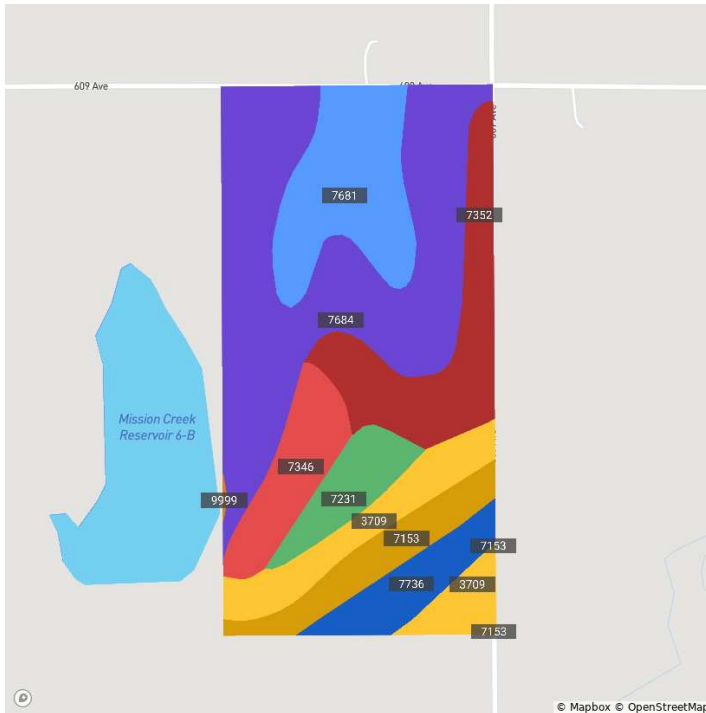
The above information is from sources deemed reliable, however the accuracy is not guaranteed.
National Land Realty assumes no liability for error, omissions or investment results.

Soils



Pawnee, NE • Township: 5, Burchard • Location: 30-1N-9E

80.00 acres, 1 selection



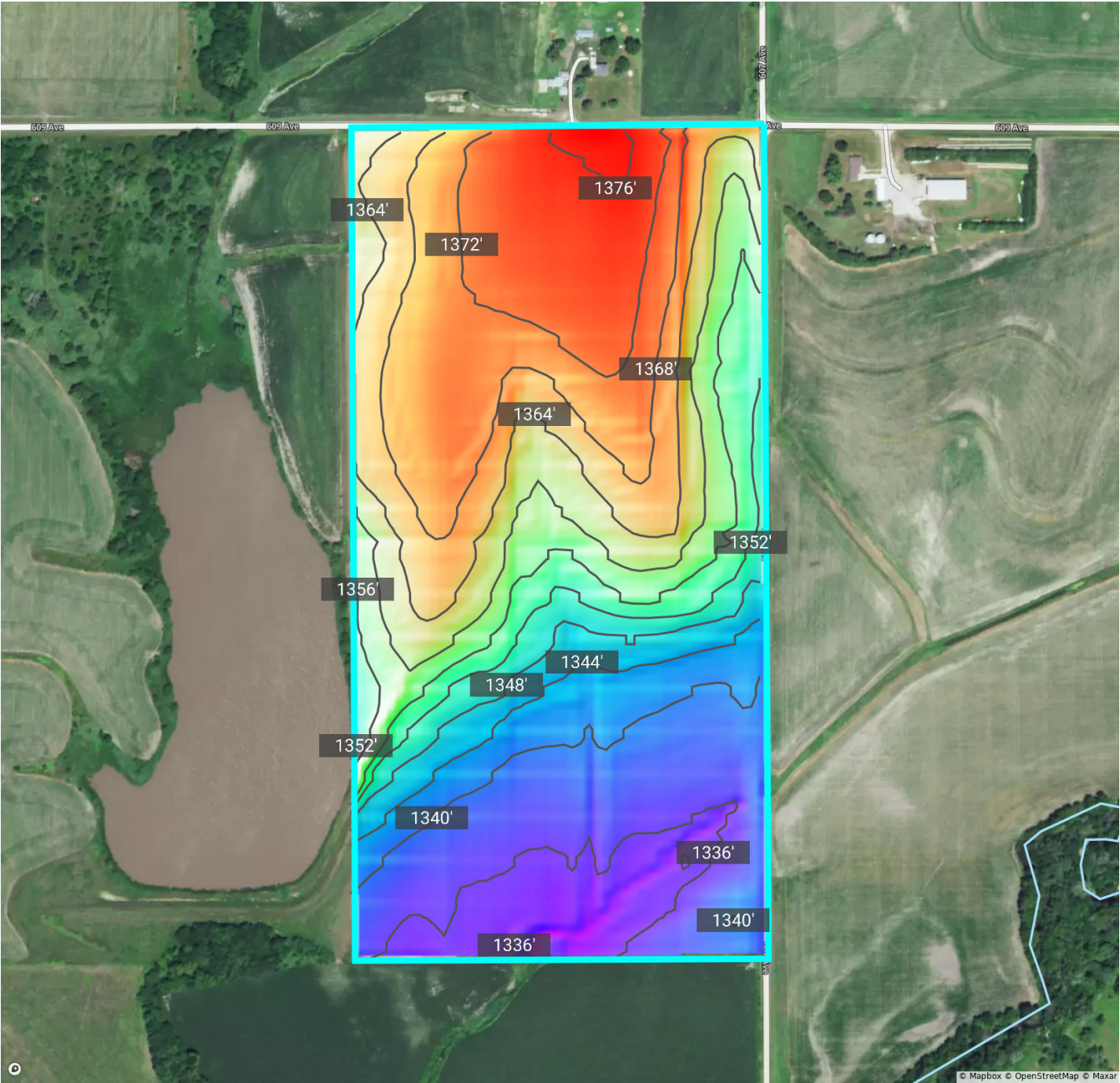
Code	Soil Description	Acres	% of Field	Non-IRR Class	IRR Class	NCCPI
7684	Wymore silty clay loam, 3 to 6 percent slopes, eroded	29.5	36.7%	3e	4e	60.5
7681	Wymore silty clay loam, 1 to 3 percent slopes	11.1	13.9%	2e	2e	64.1
7352	Malmo clay loam, 3 to 11 percent slopes, eroded	10.6	13.2%	3e	4e	45.0
3709	Crete silt loam, terrace, 0 to 1 percent slopes	8.7	10.9%	2s	2s	64.4
7346	Malmo soils, 3 to 11 percent slopes, eroded	6.0	7.5%	4e	—	41.8
7153	Kennebec silt loam, rarely flooded	5.4	6.7%	—	—	94.1
7736	Colo and Kennebec soils, occasionally flooded	4.6	5.8%	2w	2w	75.8
7231	Judson silt loam, 2 to 6 percent slopes	4.2	5.2%	2e	—	78.0
9999	Water	0.1	0.1%	—	—	0.0

Elevation



Pawnee, NE • Township: 5, Burchard • Location: 30-1N-9E

80.00 acres, 1 selection



1332.8 ft

1377.4 ft

Source: USGS 3 Meter Dem

Interval: 4.0 ft

Range: 44.6 ft

Min: 1332.8

Max: 1377.4



Overview



Pawnee, NE • Township: 5, Burchard • Location: 30-1N-9E

80.00 acres, 1 selection





United States
Department of
Agriculture

Pawnee County, Nebraska



Common Land Unit

	Non-Cropland
	Cropland

Tract Boundary
 PLSS

2022 NAIP Ortho Imagery

2025 Program Year
Map Created January 13, 2025

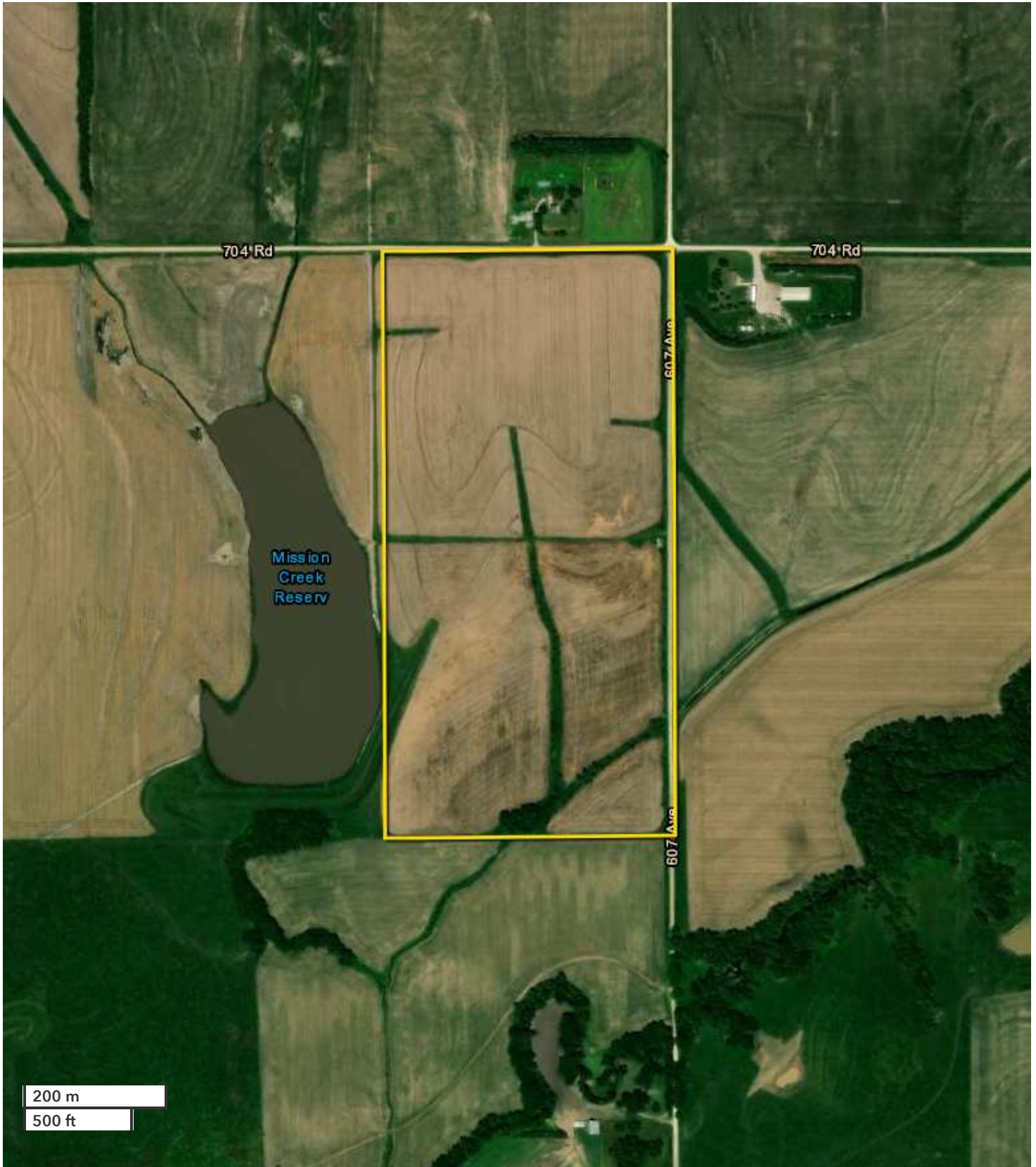
Farm 4146
Tract 9053

Tract Cropland Total: 77.43 acres

Wetland Determination Identifiers

- Restricted Use
- Limited Restrictions
- Exempt from Wetland Provisions

United States Department of Agriculture (USDA) Farm Service Agency (FSA) maps are for FSA Program administration only. This map does not represent a legal survey or reflect actual ownership; rather it depicts the information provided directly from the producer and/or National Agricultural Imagery Program (NAIP) imagery. The producer accepts the data 'as is' and assumes all risks associated with its use. USDA-FSA assumes no responsibility for actual or consequential damage incurred as a result of any user's reliance on this data outside FSA Programs. Wetland identifiers do not represent the size, shape, or specific determination of the area. Refer to your original determination (CPA-026 and attached maps) for exact boundaries and determinations or contact USDA Natural Resources Conservation Service (NRCS).



All boundary lines noted in pictures, aerals or maps should be considered estimates and not relied on as legal documents or descriptions.

NOTES

National Land Realty
PO Box 164
Blair, NE 68008
NationalLand.com

Ryan Schroeter
Office: 402-965-0880
Cell: 402-699-4250
RRS@NationalLand.com

The above information is from sources deemed reliable, however the accuracy is not guaranteed.
National Land Realty assumes no liability for error, omissions or investment results.