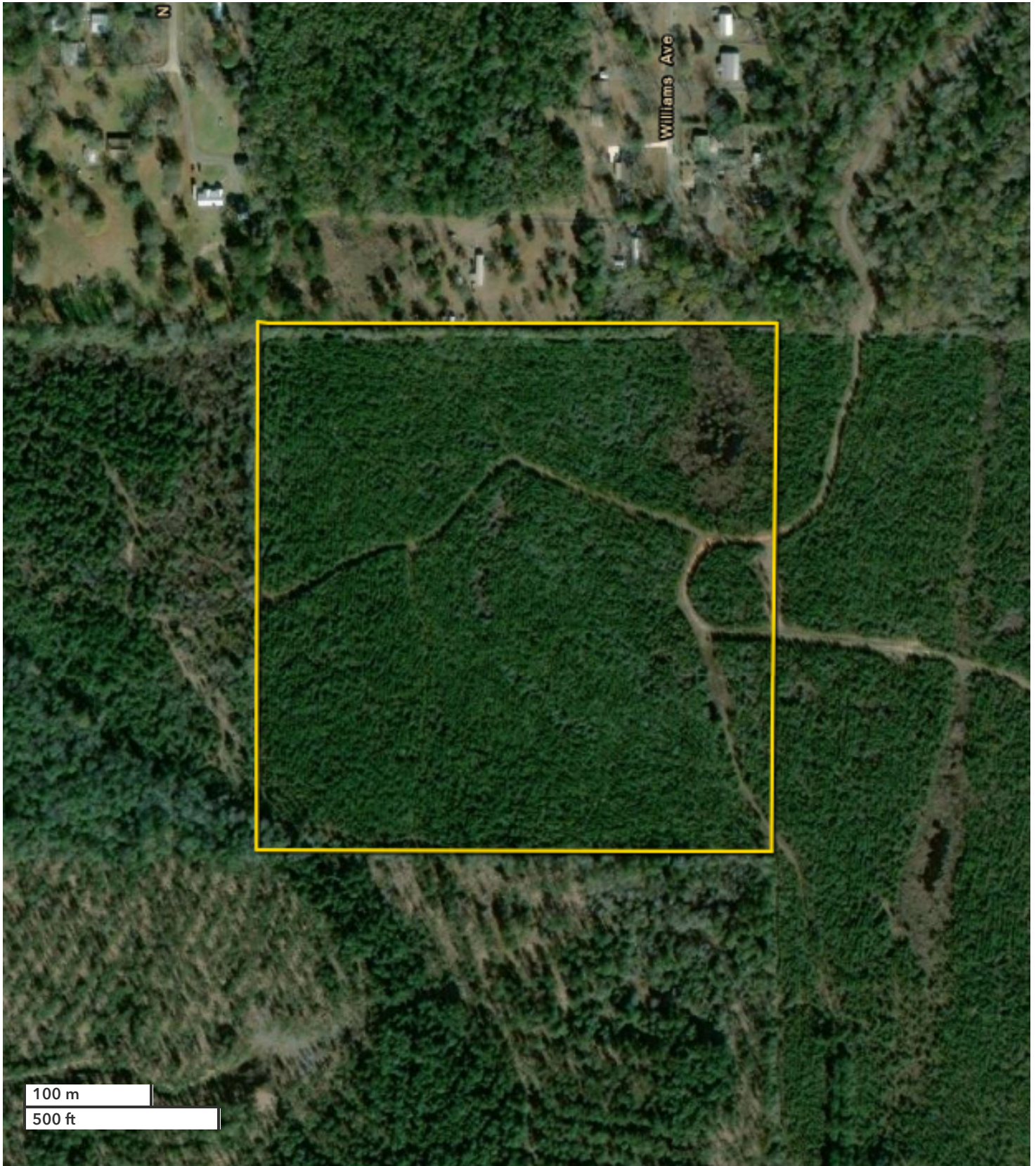




CHARLES TAYLOR, RF
Land Professional
ctaylor@nationalland.com
Mobile: 251-622-0091
Office: 855-657-5263
Fax: 888-672-1810

Salco Road Farm & Timber Tract #1
Mobile County, AL
40 +/- Acres



All boundary lines noted in pictures, aerials or maps should be considered estimates and not relied on as legal documents or descriptions.