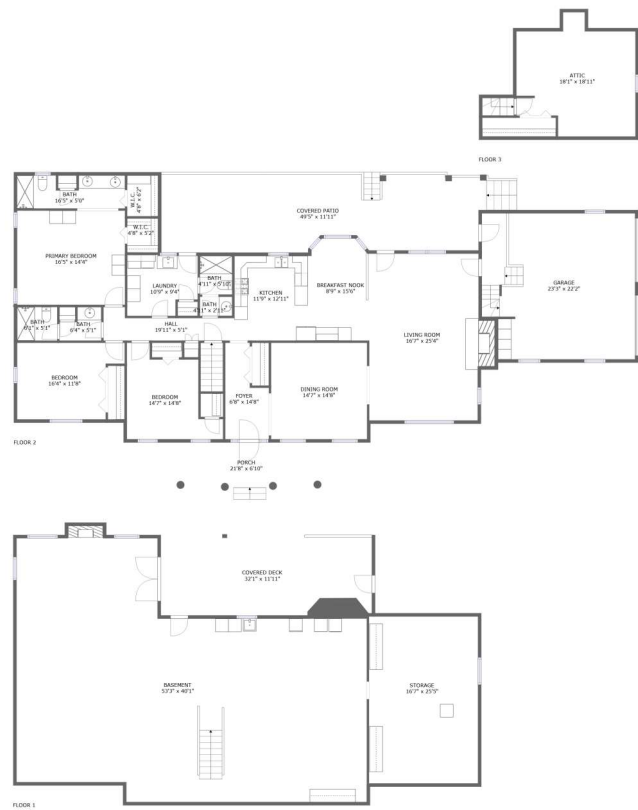


Home report

3224 Charolais Drive, Newton, Catawba County, North Carolina,
United States, 28658




Total Area: 2275 sq. ft

Below Ground: 0 sq. ft, Floor 2: 2275 sq. ft, Floor 3: 0 sq. ft
Excluded: Basement 1806 sq. ft, Storage 450 sq. ft, Outdoor Deck Covered 361 sq. ft,
Fireplace 12 sq. ft, Outdoor Porch 148 sq. ft, Outdoor Patio Covered 569 sq. ft, Garage
538 sq. ft, Undefined 62 sq. ft, Attic 310 sq. ft

Property summary



3 Floors



3 Bedrooms



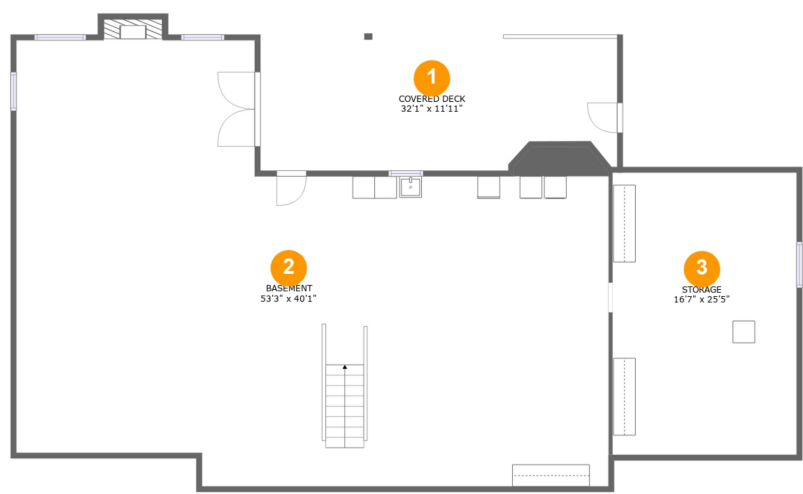
3 Bathrooms



1 Garages

Home report

3224 Charolais Drive, Newton, Catawba County, North Carolina,
United States, 28658



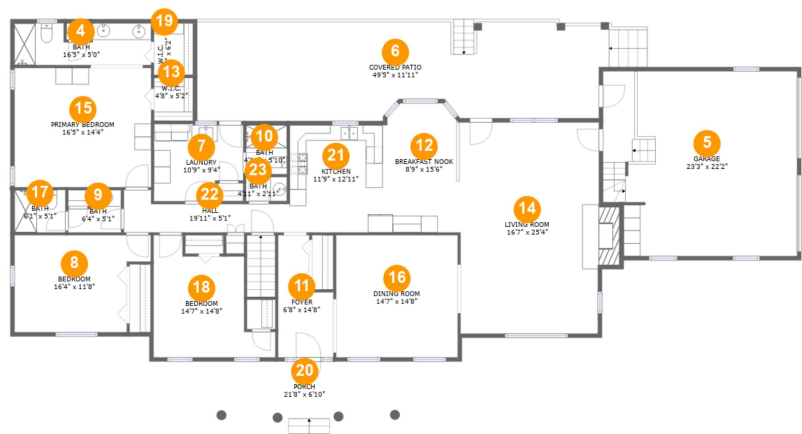
Room dimensions

Floor 1 Below ground Total:0sqft Excluded: 2629sqft

#		Max Dimensions	sqft	Included
1	Covered Deck	32'1" x 11'11"	361 sq. ft	No
2	Basement	53'3" x 40'1"	1725 sq. ft	No
3	Storage	16'7" x 25'5"	420 sq. ft	No

Home report

3224 Charolais Drive, Newton, Catawba County, North Carolina,
United States, 28658



Room dimensions

Floor 2 Total:2275sqft Excluded: 1255sqft

#		Max Dimensions	sqft	Included
4	Bath	16'5" x 5'0"	74 sq. ft	Yes
5	Garage	23'3" x 22'2"	499 sq. ft	No
6	Covered Patio	49'5" x 11'11"	569 sq. ft	No
7	Laundry	10'9" x 9'4"	90 sq. ft	Yes
8	Bedroom	16'4" x 11'8"	166 sq. ft	Yes
9	Bath	6'4" x 5'1"	26 sq. ft	Yes
10	Bath	4'11" x 5'10"	29 sq. ft	Yes
11	Foyer	6'8" x 14'8"	77 sq. ft	Yes
12	Breakfast Nook	8'9" x 15'6"	132 sq. ft	Yes
13	W.I.C.	4'8" x 5'2"	24 sq. ft	Yes
14	Living Room	16'7" x 25'4"	438 sq. ft	Yes

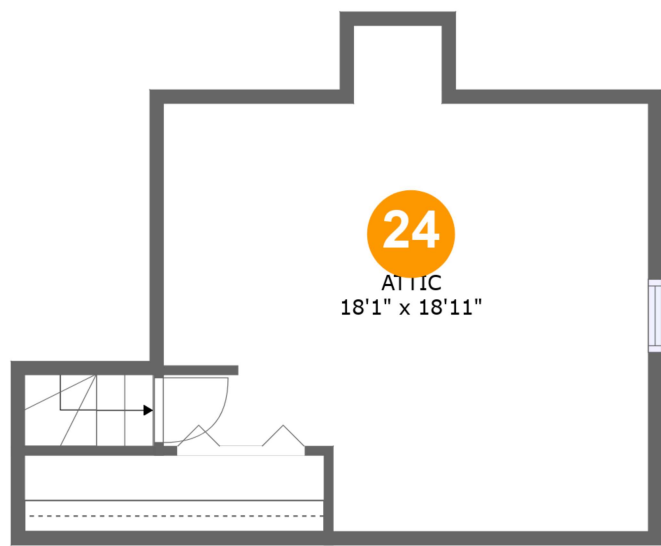
Home report

**3224 Charolais Drive, Newton, Catawba County, North Carolina,
United States, 28658**

#		Max Dimensions	sqft	Included
15	Primary Bedroom	16'5" x 14'4"	235 sq. ft	Yes
16	Dining Room	14'7" x 14'8"	214 sq. ft	Yes
17	Bath	6'1" x 5'1"	31 sq. ft	Yes
18	Bedroom	14'7" x 14'8"	152 sq. ft	Yes
19	W.I.C.	4'8" x 6'2"	29 sq. ft	Yes
20	Porch	21'8" x 6'10"	148 sq. ft	No
21	Kitchen	11'9" x 12'11"	151 sq. ft	Yes
22	Hall	19'11" x 5'1"	73 sq. ft	Yes
23	Bath	4'11" x 2'11"	14 sq. ft	Yes

Home report

3224 Charolais Drive, Newton, Catawba County, North Carolina,
United States, 28658

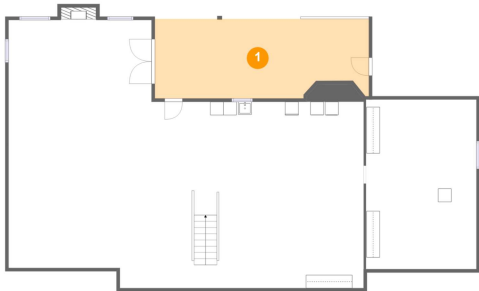


Room dimensions

Floor 3 Total:0sqft Excluded: 372sqft

#		Max Dimensions	sqft	Included
24	Attic	18'1" x 18'11"	278 sq. ft	No

1 Floor 1 - Covered Deck



Max Dimensions: 32'1" x 11'11"
Calculated Area: 361 sq. ft
Included: No

Heated: No
Finished: Yes
Enclosed: No
Contiguous: Yes
Permitted: Yes
Wet space: No
Addition: No
Conversion: No

2 Floor 1 - Basement



Max Dimensions: 53'3" x 40'1"
Calculated Area: 1725 sq. ft
Included: No

Heated: Yes
Finished: Yes
Enclosed: Yes
Contiguous: No
Permitted: Yes
Wet space: No
Addition: No
Conversion: No

3 Floor 1 - Storage



Max Dimensions: 16'7" x 25'5"
Calculated Area: 420 sq. ft
Included: No

Heated: No
Finished: No
Enclosed: No
Contiguous: Yes
Permitted: Yes
Wet space: No
Addition: No
Conversion: No

4 Floor 2 - Bath



Max Dimensions: 16'5" x 5'0"
Calculated Area: 74 sq. ft
Included: Yes

Heated: Yes
Finished: Yes
Enclosed: Yes
Contiguous: Yes
Permitted: Yes
Wet space: Yes
Addition: No
Conversion: No

5 Floor 2 - Garage



Max Dimensions: 23'3" x 22'2"
Calculated Area: 499 sq. ft
Included: No

Heated: No
Finished: No
Enclosed: Yes
Contiguous: Yes
Permitted: Yes
Wet space: No
Addition: No
Conversion: No

3224 Charolais Drive, Newton, Catawba County, North Carolina,
United States, 28658

6 Floor 2 - Covered Patio



Max Dimensions: 49'5" x 11'11"
Calculated Area: 569 sq. ft
Included: No

Heated: No
Finished: Yes
Enclosed: No
Contiguous: Yes
Permitted: Yes
Wet space: No
Addition: No
Conversion: No

7 Floor 2 - Laundry



Max Dimensions: 10'9" x 9'4"
Calculated Area: 90 sq. ft
Included: Yes

Heated: Yes
Finished: Yes
Enclosed: Yes
Contiguous: Yes
Permitted: Yes
Wet space: No
Addition: No
Conversion: No

8 Floor 2 - Bedroom



Max Dimensions: 16'4" x 11'8"
Calculated Area: 166 sq. ft
Included: Yes

Heated: Yes
Finished: Yes
Enclosed: Yes
Contiguous: Yes
Permitted: Yes
Wet space: No
Addition: No
Conversion: No

9 Floor 2 - Bath



Max Dimensions: 6'4" x 5'1"
Calculated Area: 26 sq. ft
Included: Yes

Heated: Yes
Finished: Yes
Enclosed: Yes
Contiguous: Yes
Permitted: Yes
Wet space: Yes
Addition: No
Conversion: No

10 Floor 2 - Bath



Max Dimensions: 4'11" x 5'10"
Calculated Area: 29 sq. ft
Included: Yes

Heated: Yes
Finished: Yes
Enclosed: Yes
Contiguous: Yes
Permitted: Yes
Wet space: Yes
Addition: No
Conversion: No

11 Floor 2 - Foyer

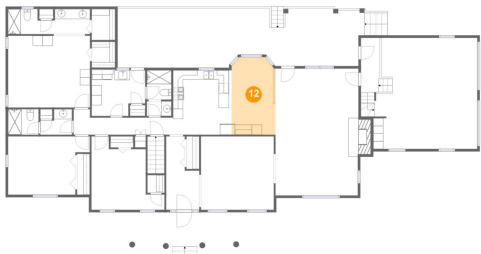


Max Dimensions: 6'8" x 14'8"
Calculated Area: 77 sq. ft
Included: Yes

Heated: Yes
Finished: Yes
Enclosed: Yes
Contiguous: Yes
Permitted: Yes
Wet space: No
Addition: No
Conversion: No

3224 Charolais Drive, Newton, Catawba County, North Carolina,
United States, 28658

12 Floor 2 - Breakfast Nook



Max Dimensions: 8'9" x 15'6"
Calculated Area: 132 sq. ft
Included: Yes

Heated: Yes
Finished: Yes
Enclosed: Yes
Contiguous: Yes
Permitted: Yes
Wet space: No
Addition: No
Conversion: No

13 Floor 2 - W.I.C.



Max Dimensions: 4'8" x 5'2"
Calculated Area: 24 sq. ft
Included: Yes

Heated: Yes
Finished: Yes
Enclosed: Yes
Contiguous: Yes
Permitted: Yes
Wet space: No
Addition: No
Conversion: No

14 Floor 2 - Living Room



Max Dimensions: 16'7" x 25'4"
Calculated Area: 438 sq. ft
Included: Yes

Heated: Yes
Finished: Yes
Enclosed: Yes
Contiguous: Yes
Permitted: Yes
Wet space: No
Addition: No
Conversion: No

15 Floor 2 - Primary Bedroom



Max Dimensions: 16'5" x 14'4"
Calculated Area: 235 sq. ft
Included: Yes

Heated: Yes
Finished: Yes
Enclosed: Yes
Contiguous: Yes
Permitted: Yes
Wet space: No
Addition: No
Conversion: No

16 Floor 2 - Dining Room



Max Dimensions: 14'7" x 14'8"
Calculated Area: 214 sq. ft
Included: Yes

Heated: Yes
Finished: Yes
Enclosed: Yes
Contiguous: Yes
Permitted: Yes
Wet space: No
Addition: No
Conversion: No

17 Floor 2 - Bath



Max Dimensions: 6'1" x 5'1"
Calculated Area: 31 sq. ft
Included: Yes

Heated: Yes
Finished: Yes
Enclosed: Yes
Contiguous: Yes
Permitted: Yes
Wet space: Yes
Addition: No
Conversion: No

18 Floor 2 - Bedroom



Max Dimensions: 14'7" x 14'8"
Calculated Area: 152 sq. ft
Included: Yes

Heated: Yes
Finished: Yes
Enclosed: Yes
Contiguous: Yes
Permitted: Yes
Wet space: No
Addition: No
Conversion: No

19 Floor 2 - W.I.C.



Max Dimensions: 4'8" x 6'2"
Calculated Area: 29 sq. ft
Included: Yes

Heated: Yes
Finished: Yes
Enclosed: Yes
Contiguous: Yes
Permitted: Yes
Wet space: No
Addition: No
Conversion: No

20 Floor 2 - Porch



Max Dimensions: 21'8" x 6'10"
Calculated Area: 148 sq. ft
Included: No

Heated: No
Finished: Yes
Enclosed: No
Contiguous: Yes
Permitted: Yes
Wet space: No
Addition: No
Conversion: No

21 Floor 2 - Kitchen



Max Dimensions: 11'9" x 12'11"
Calculated Area: 151 sq. ft
Included: Yes

Heated: Yes
Finished: Yes
Enclosed: Yes
Contiguous: Yes
Permitted: Yes
Wet space: No
Addition: No
Conversion: No

22 Floor 2 - Hall



Max Dimensions: 19'11" x 5'1"
Calculated Area: 73 sq. ft
Included: Yes

Heated: Yes
Finished: Yes
Enclosed: Yes
Contiguous: Yes
Permitted: Yes
Wet space: No
Addition: No
Conversion: No

23 Floor 2 - Bath



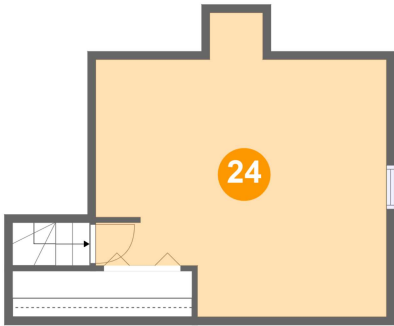
Max Dimensions: 4'11" x 2'11"
Calculated Area: 14 sq. ft
Included: Yes

Heated: Yes
Finished: Yes
Enclosed: Yes
Contiguous: Yes
Permitted: Yes
Wet space: Yes
Addition: No
Conversion: No

Home report

3224 Charolais Drive, Newton, Catawba County, North Carolina,
United States, 28658

24 Floor 3 - Attic



Max Dimensions: 18'1" x
18'11"
Calculated Area: 278 sq. ft
Included: No

Heated: No
Finished: No
Enclosed: Yes
Contiguous:
Yes
Permitted: Yes
Wet space: No
Addition: No
Conversion: No