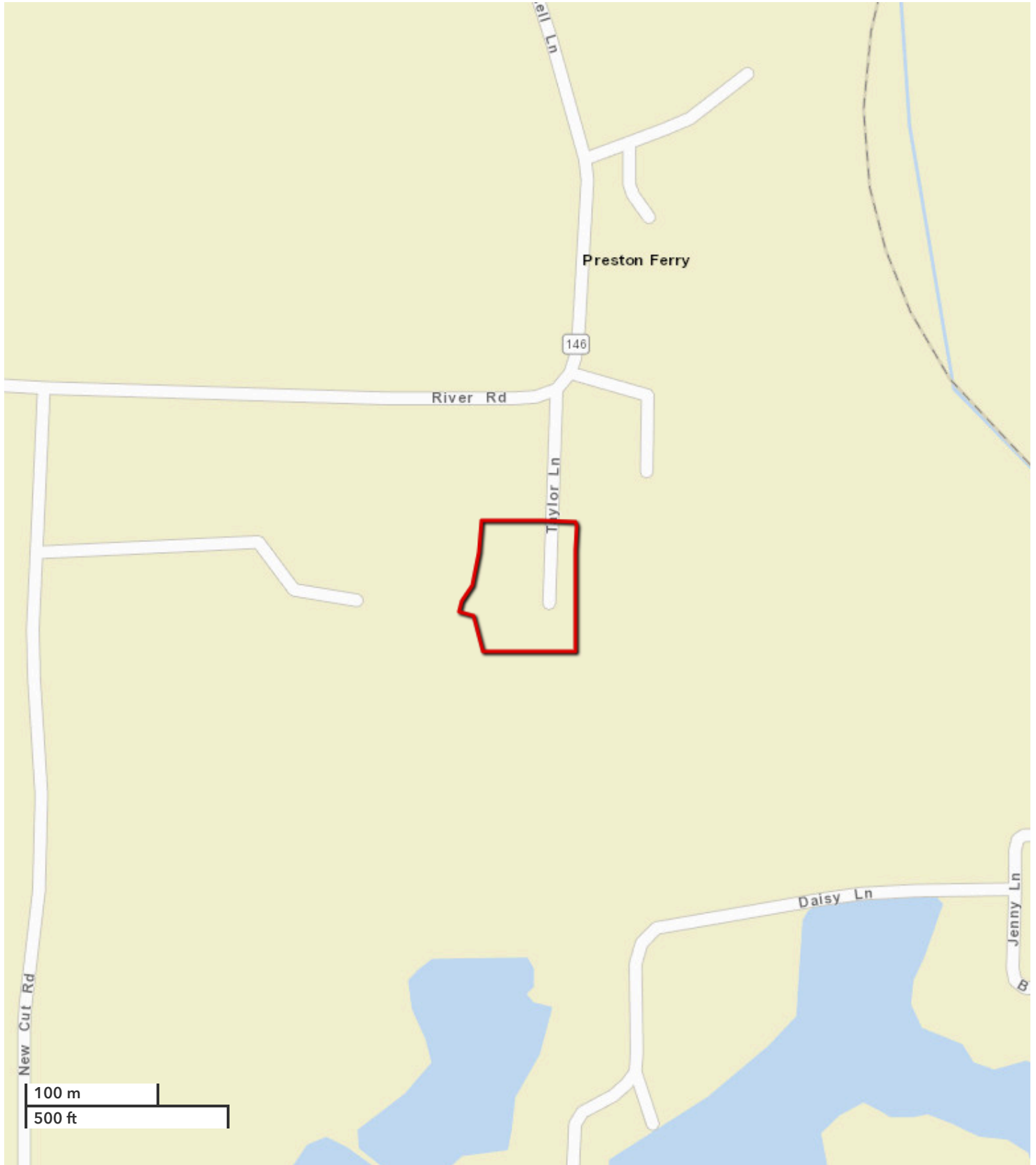




JERAMY STEPHENS, ALC  
Broker  
jstephens@nationalland.com  
Mobile: 870-672-3250  
Office: 870-539-9854

Preston Ferry Cabin  
Arkansas County, AR  
1.44 +/- Acres  
\$39,900



*All boundary lines noted in pictures, aerials or maps should be considered estimates and not relied on as legal documents or descriptions.*