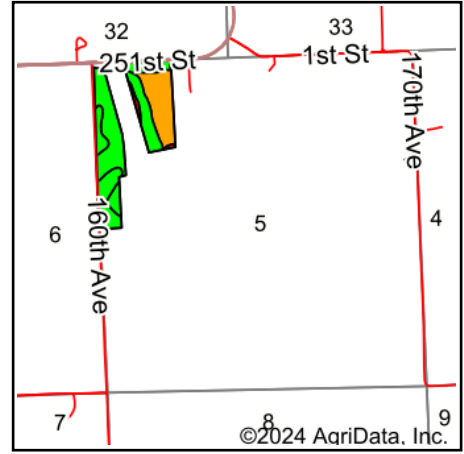


Soils Map



Soils data provided by USDA and NRCS.



State: **Minnesota**
 County: **Rock**
 Location: **5-104N-44W**
 Township: **Battle Plain**
 Acres: **43.84**
 Date: **11/19/2024**



Maps Provided By:



© AgriData, Inc. 2023

www.AgriDataInc.com



Area Symbol: MN117, Soil Area Version: 24
 Area Symbol: MN133, Soil Area Version: 22

Code	Soil Description	Acres	Percent of field	PI Legend	Non-Irr Class *c	Irr Class *c	Productivity Index
P34B	Splitrock silty clay loam, 2 to 5 percent slopes	13.96	31.8%		Ile		91
P13A	Fairhaven silt loam, 0 to 2 percent slopes	11.16	25.5%		Ils		78
P28A	Ransom silty clay loam, 1 to 3 percent slopes	8.49	19.4%		Ie		99
P19A	Alcester silty clay loam, cool, 0 to 2 percent slopes	5.96	13.6%		I	I	100
P16A	Graceville silty clay loam, 0 to 2 percent slopes	3.24	7.4%		Is		98
P44E	Shindler clay loam, 15 to 45 percent slopes	0.65	1.5%		VIIe		21
P37D	Talmo gravelly sandy loam, 6 to 35 percent slopes	0.23	0.5%		VIIIs		21
P16A	Graceville silt loam, 0 to 2 percent slopes	0.15	0.3%		Is		98
Weighted Average					1.69	*-	89.6

*c: Using Capabilities Class Dominant Condition Aggregation Method

*- Irr Class weighted average cannot be calculated on the current soils data due to missing data.