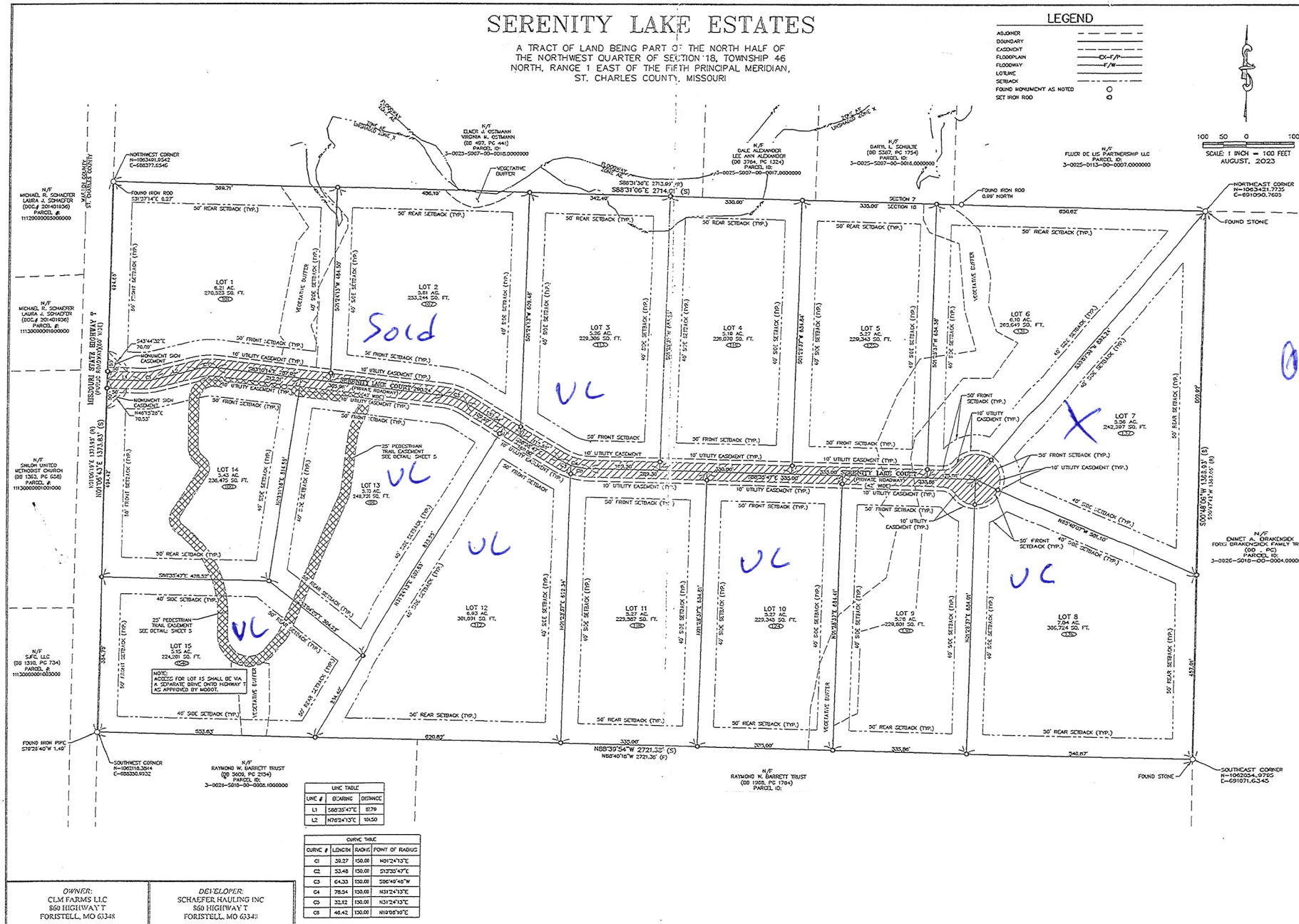
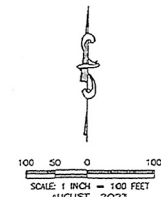


SERENITY LAKE ESTATES

A TRACT OF LAND BEING PART OF THE NORTH HALF OF THE NORTHWEST QUARTER OF SECTION 18, TOWNSHIP 46 NORTH, RANGE 1 EAST OF THE FIFTH PRINCIPAL MERIDIAN, ST. CHARLES COUNTY, MISSOURI

LEGEND

ADJOINER	---
BOUNDARY	---
EASEMENT	---
FLOODPLAIN	---F---
FLOODWAY	---F/W---
LOTLINE	---
SETBACK	---
FOUND MONUMENT AS NOTED	○
SET HIGH ROAD	○



LINE TABLE

LINE #	BEARING	DISTANCE
L1	S80°25'47"E	8179
L2	N79°24'13"E	10450

OWNER'S FILE

CURVE #	LENGTH	BEARING	POINT OF BEGINNING
C1	38.27	S50°00'00"E	N17°24'13"E
C2	33.48	S50°00'00"E	S17°25'47"E
C3	64.33	S50°00'00"E	S06°46'46"W
C4	78.34	S50°00'00"E	N17°24'13"E
C5	32.12	S50°00'00"E	N17°24'13"E
C6	46.42	S50°00'00"E	N19°08'10"E

OWNER:
CLM FARMS LLC
850 HIGHWAY T
FORISTELL, MO 63348

DEVELOPER:
SCHAEFER HAULING INC
850 HIGHWAY T
FORISTELL, MO 63348

MISSOURI STATE BOARD OF SURVEYORS
 800 N. GARDNER ST., SUITE 100
 COLUMBIA, MISSOURI 65201
 (620) 425-2222
 www.missourisurveyors.com

COCHRAN
 A MISSOURI SURVEYING & CONSULTING FIRM
 1000 N. GARDNER ST., SUITE 100
 COLUMBIA, MISSOURI 65201
 (620) 425-2222
 www.cochran-surveying.com

Missouri State Certificate of Authority Number: 0000211840
 Engineer: 200000048

MINOR SUBDIVISION PLAT
 SERENITY LAKE ESTATES
 ST. CHARLES COUNTY, MISSOURI

DATE	
BY	
FOR	
SCALE	
DATE	
BY	
FOR	
SCALE	
DATE	
BY	
FOR	
SCALE	

AUG. 31, 2023
 1" = 100'
 M23-8609
 2 of 5