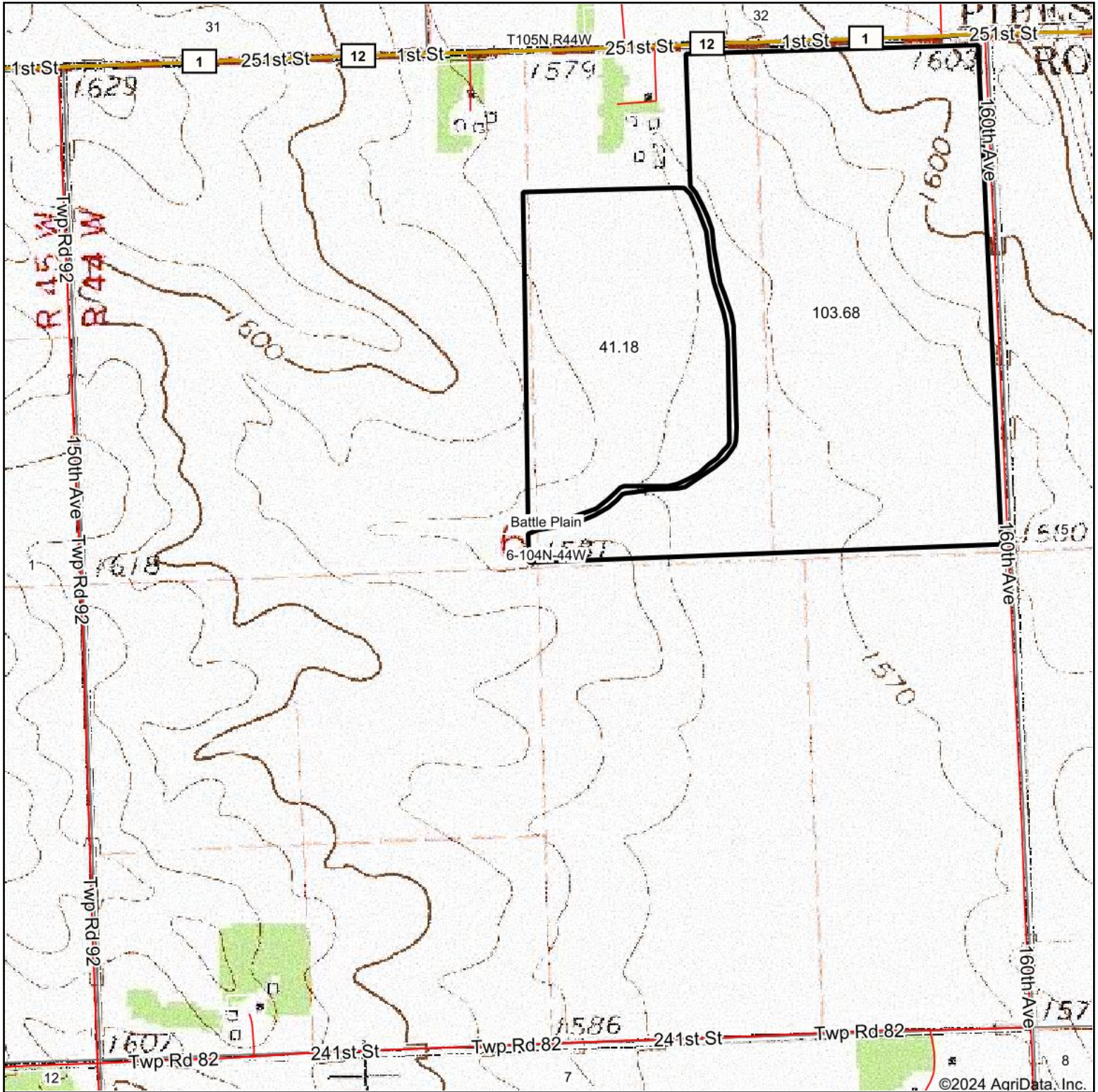
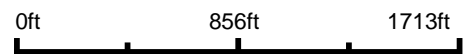


Topography Map



Map Center: 43° 50' 28.21, -96° 9' 45.9



NATIONAL LAND REALTY



**6-104N-44W
Rock County
Minnesota**



8/15/2024

Maps Provided By:
surety
CUSTOMIZED ONLINE MAPPING

© AgriData, Inc. 2023 www.AgrIDataInc.com