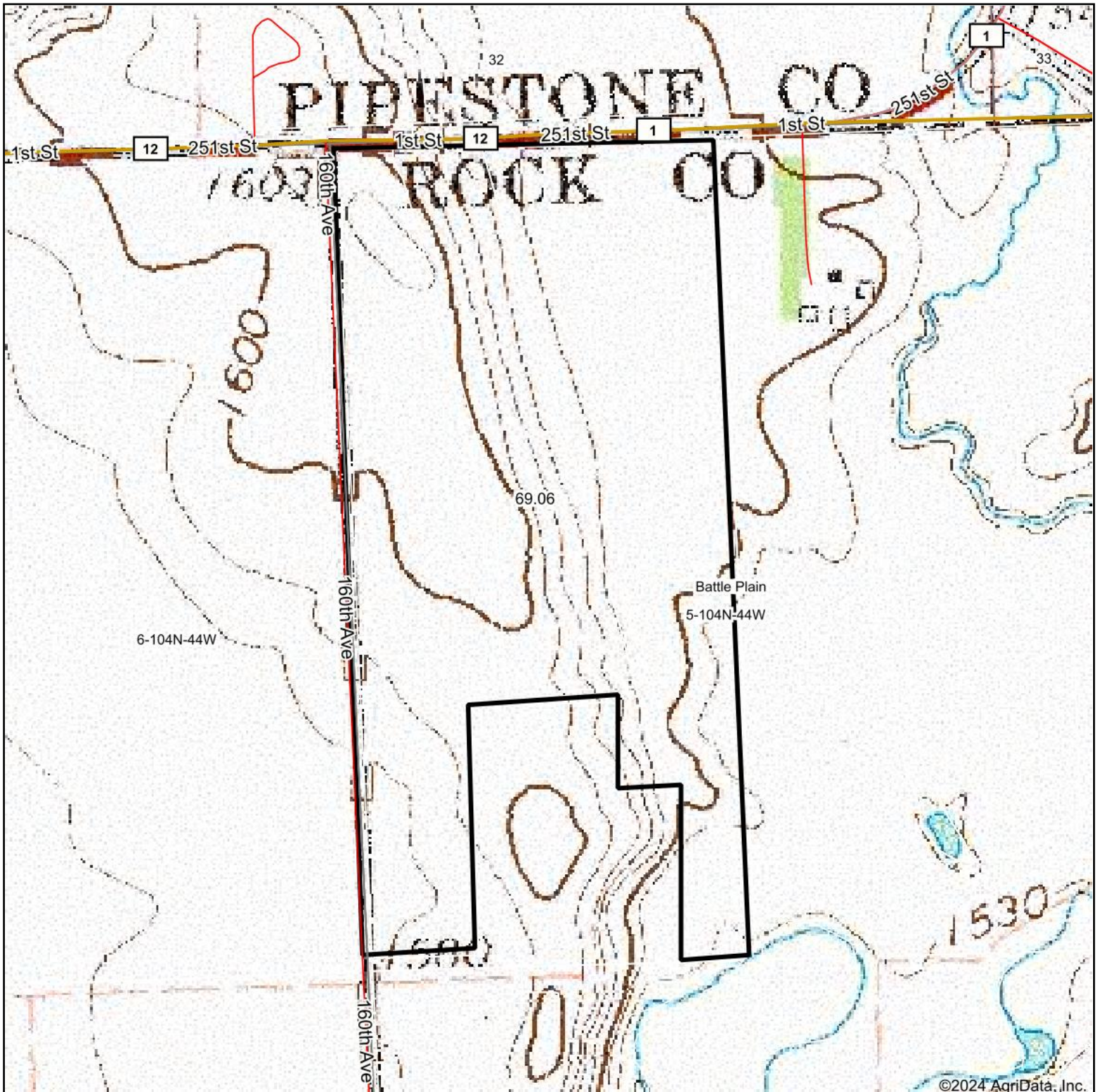
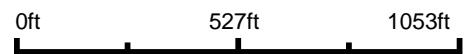


Topography Map



©2024 AgriData, Inc.

Map Center: 43° 50' 41.44, -96° 9' 2.19



NATIONAL LAND REALTY



**5-104N-44W
Rock County
Minnesota**



8/15/2024

Maps Provided By:
surety
CUSTOMIZED ONLINE MAPPING

© AgriData, Inc. 2023 www.AgriDataInc.com