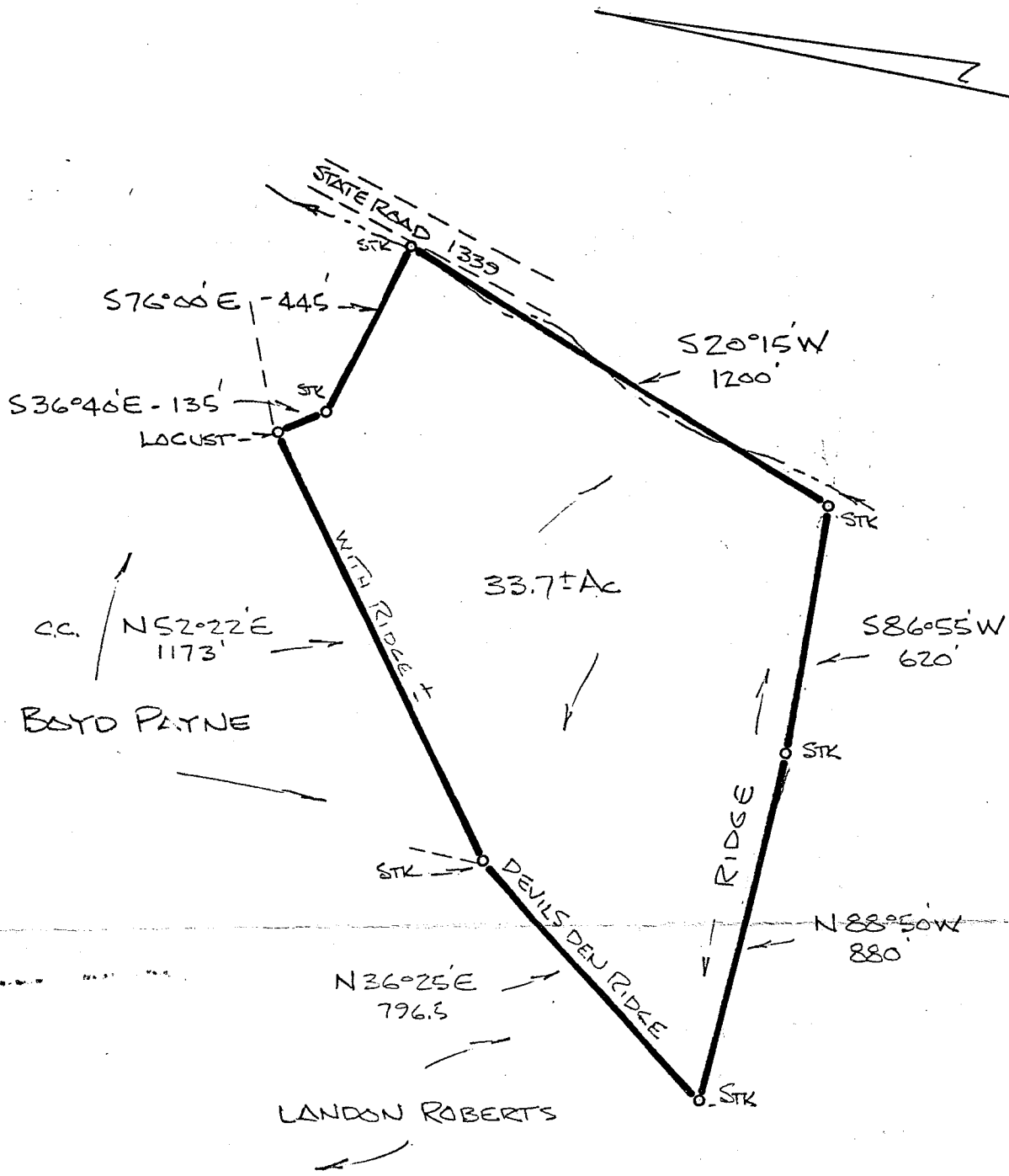


MAP DRAWN FROM SURVEY FOR BOYD PAYNE, JULY, 1971
NOT FROM ACTUAL FIELD SURVEY THIS DATE.



A PARTIAL-SURVEY FOR
JON HILLEN

TOWNSHIP # 2
 MADISON COUNTY, N. C.

SCALE = 1" = 400'

AUGUST 10, 1976

SURVEY BY
 RAYBURN A. REEVES RLS
 MARSHALL, N. C.

