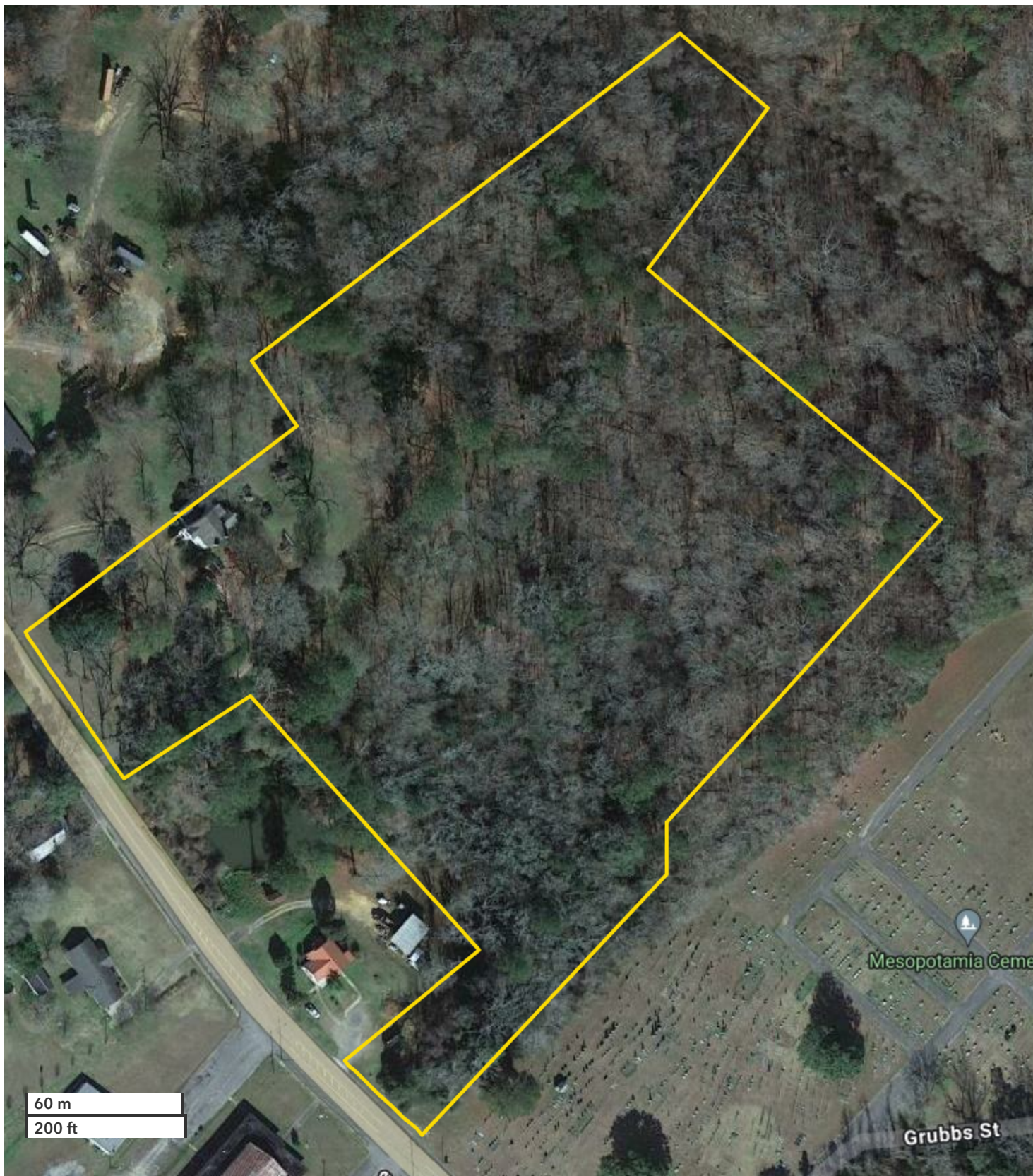




MITCHELL JONES  
Land Professional  
888-672-1810  
Mjones@NationalLand.com  
205-529-5500  
855-657-5263

JASON ABRAMS  
Land Professional  
888-672-1810  
Jabrams@nationalland.com  
334-216-0690  
855-657-5263

822 Mesopotamia Street: Historic Home with Acreage  
Greene County, AL  
18 +/- Acres  
\$419,000



*All boundary lines noted in pictures, aerials or maps should be considered estimates and not relied on as legal documents or descriptions.*