



Westville Hunting & Timber Property

80 +/- Acres | Holmes County, FL | \$299,999



National Land Realty
9 N. Conception St.
Mobile, AL 36602
NationalLand.com



Chandler Guy
Office: 855-657-5263
Cell: 850-503-1307
Fax: 888-672-1810
Cguy@NationalLand.com

The above information is from sources deemed reliable, however the accuracy is not guaranteed.
National Land Realty assumes no liability for error, omissions or investment results.



PROPERTY SUMMARY

This 80 acres offers a beautiful hunting tract and mixed pine and hardwood timber with an interior trail system that is easy to navigate. Hunt deer, turkey, and small game.

Located only 16 minutes from I-10, it's an ideal getaway for those who live anywhere from Jacksonville to Pensacola, Florida. It is also located one hour from Panama City and approximately 20 minutes from Ponce de Leon, DeFuniak Springs, and Bonifay.

Shown by appointment only. Contact Chandler Guy at 850-503-1307 for more information.

COMMERCIAL PROPERTY HIGHLIGHTS

Zoning

Timberland

Future Land Use

Timberland

ACREAGE BREAKDOWN

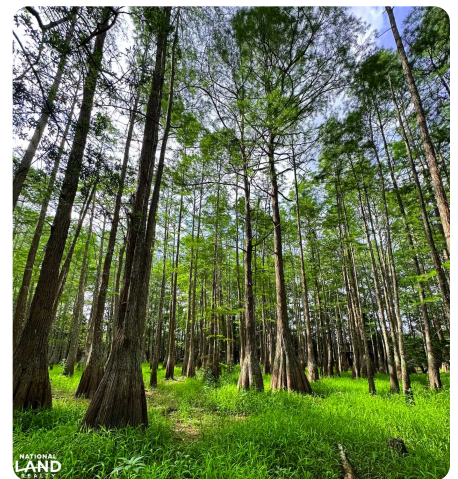
80 +/- acres mixed pine and hardwood timber

ADDRESS

0 Skinner Road
Westville, FL 32464

LOCATION

Contact agent for directions.



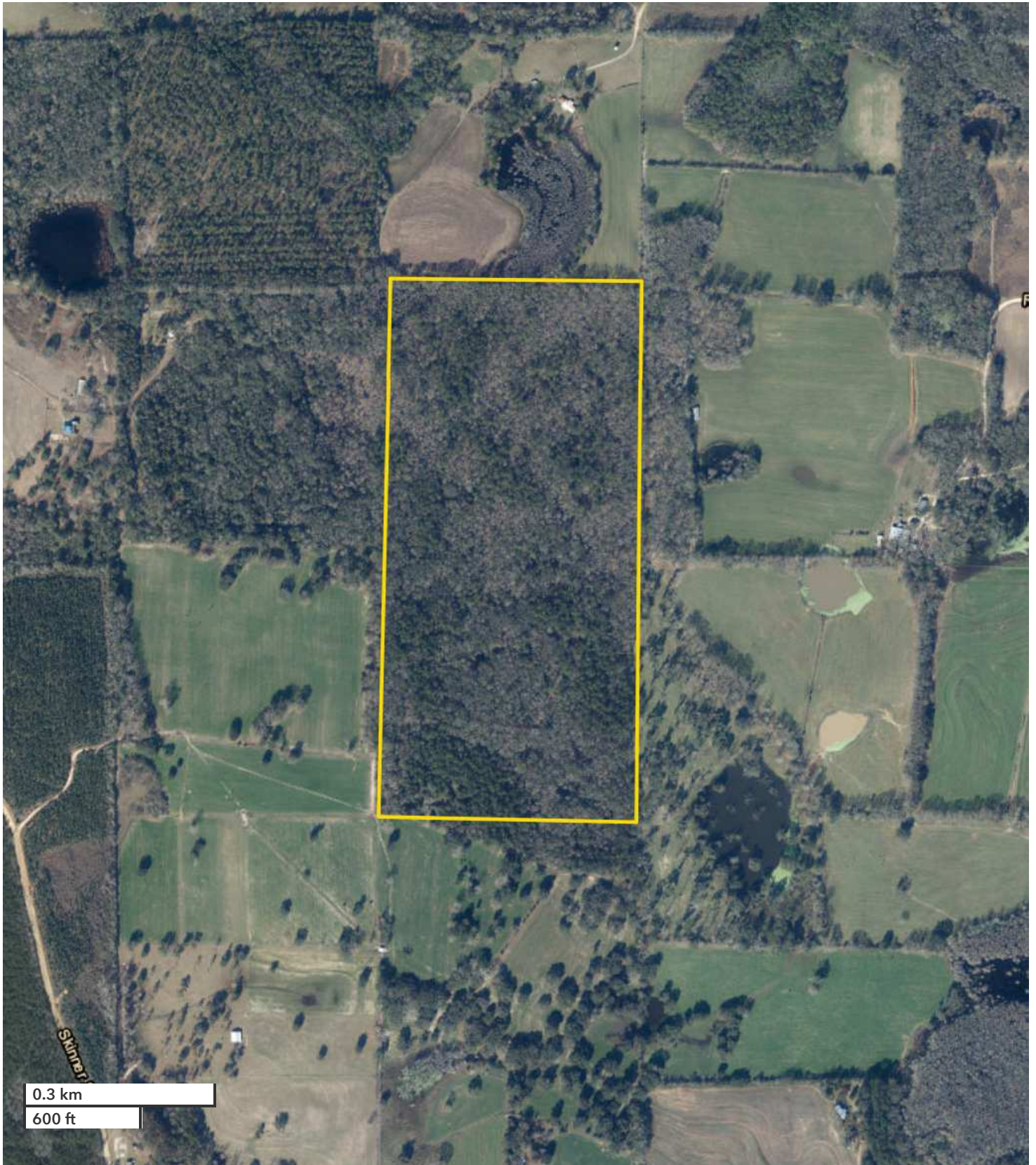
PROPERTY HIGHLIGHTS

- Power available on adjoining neighbor
- Timber is mixed pine/hardwood and consisting primarily of pulpwod and chip-n-saw
- Deer and turkey hunting
- Great ATV and camping potential

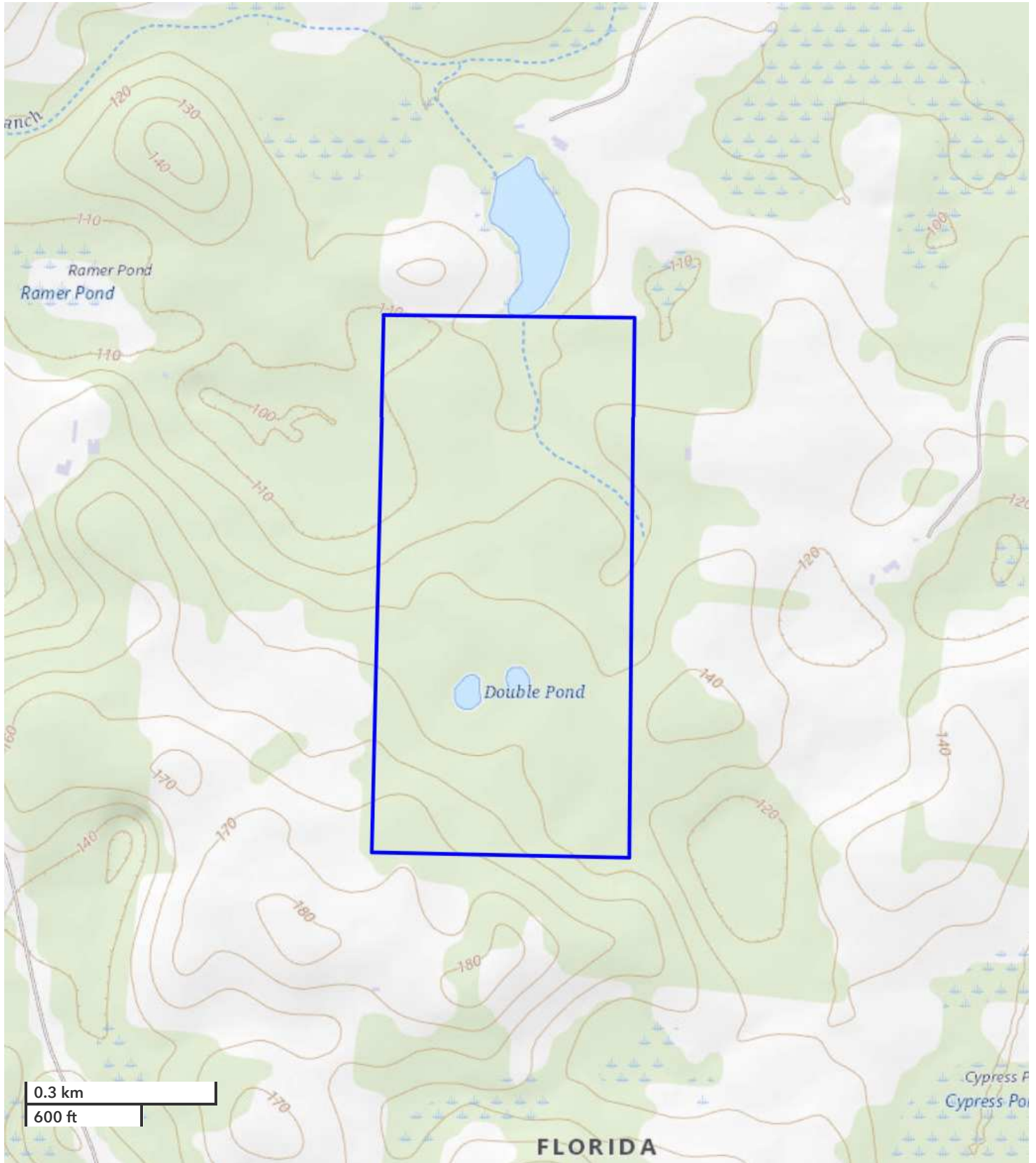


nationalland.com/listing/westville-hunting-timber-tract





All boundary lines noted in pictures, aerials or maps should be considered estimates and not relied on as legal documents or descriptions.



All boundary lines noted in pictures, aerials or maps should be considered estimates and not relied on as legal documents or descriptions.



National Land Realty
9 N. Conception St.
Mobile, AL 36602
NationalLand.com



Chandler Guy
Office: 855-657-5263
Cell: 850-503-1307
Fax: 888-672-1810
Cguy@NationalLand.com

The above information is from sources deemed reliable, however the accuracy is not guaranteed.
National Land Realty assumes no liability for error, omissions or investment results.