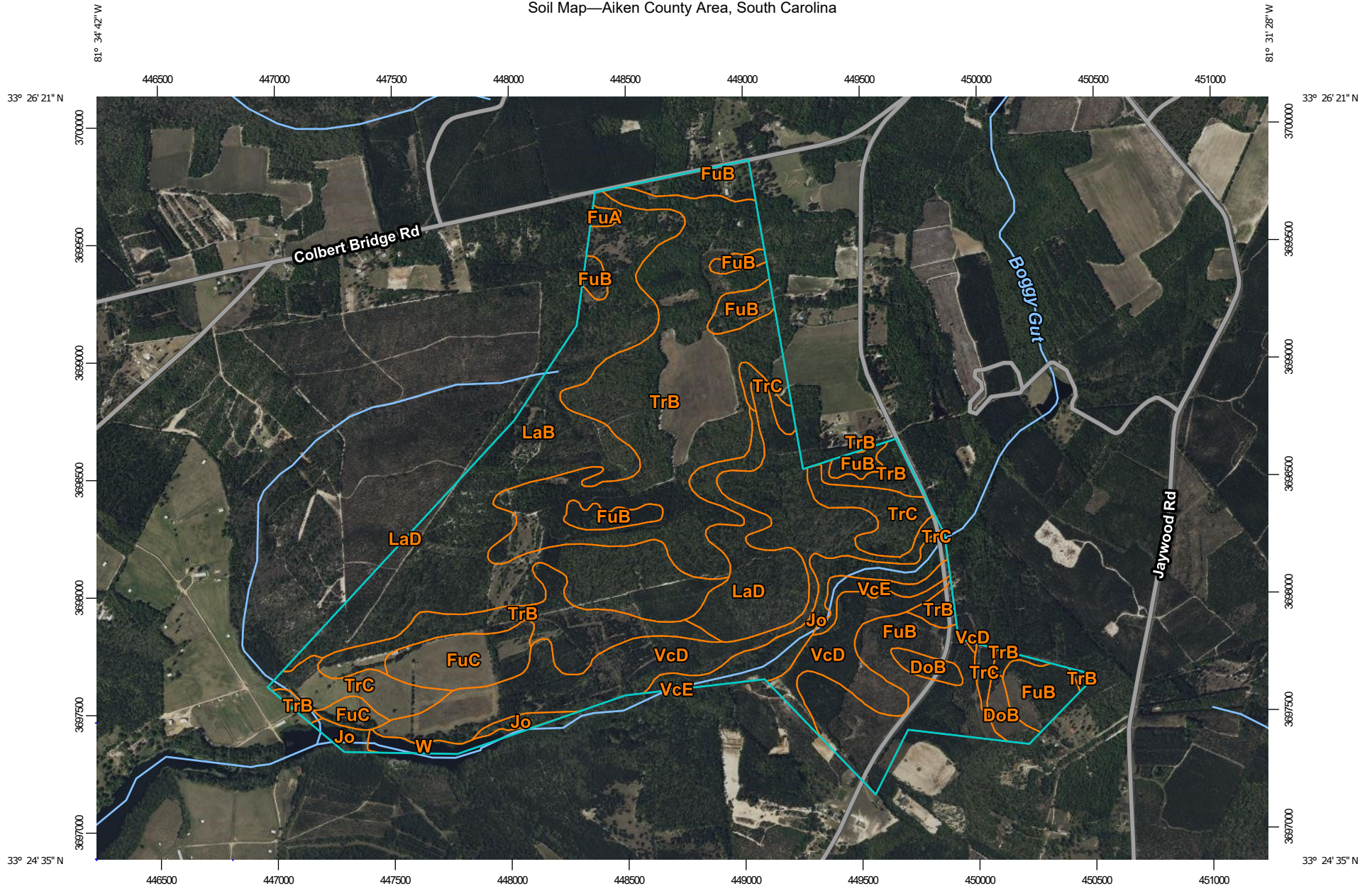
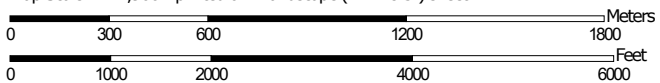


Soil Map—Aiken County Area, South Carolina



Map Scale: 1:22,900 if printed on A landscape (11" x 8.5") sheet.



Map projection: Web Mercator Corner coordinates: WGS84 Edge tics: UTM Zone 17N WGS84

MAP LEGEND

Area of Interest (AOI)

 Area of Interest (AOI)

Soils

 Soil Map Unit Polygons

 Soil Map Unit Lines

 Soil Map Unit Points

Special Point Features



Blowout



Borrow Pit



Clay Spot



Closed Depression



Gravel Pit



Gravelly Spot



Landfill



Lava Flow



Marsh or swamp



Mine or Quarry



Miscellaneous Water



Perennial Water



Rock Outcrop



Saline Spot



Sandy Spot



Severely Eroded Spot



Sinkhole



Slide or Slip



Sodic Spot



Spoil Area



Stony Spot



Very Stony Spot



Wet Spot



Other



Special Line Features

Water Features



Streams and Canals

Transportation



Rails



Interstate Highways



US Routes



Major Roads



Local Roads

Background



Aerial Photography

MAP INFORMATION

The soil surveys that comprise your AOI were mapped at 1:20,000.

Please rely on the bar scale on each map sheet for map measurements.

Source of Map: Natural Resources Conservation Service

Web Soil Survey URL:

Coordinate System: Web Mercator (EPSG:3857)

Maps from the Web Soil Survey are based on the Web Mercator projection, which preserves direction and shape but distorts distance and area. A projection that preserves area, such as the Albers equal-area conic projection, should be used if more accurate calculations of distance or area are required.

This product is generated from the USDA-NRCS certified data as of the version date(s) listed below.

Soil Survey Area: Aiken County Area, South Carolina

Survey Area Data: Version 26, Sep 7, 2022

Soil map units are labeled (as space allows) for map scales 1:50,000 or larger.

Date(s) aerial images were photographed: Apr 15, 2022—May 10, 2022

The orthophoto or other base map on which the soil lines were compiled and digitized probably differs from the background imagery displayed on these maps. As a result, some minor shifting of map unit boundaries may be evident.

Map Unit Legend

Map Unit Symbol	Map Unit Name	Acres in AOI	Percent of AOI
DoB	Dothan loamy sand, 2 to 6 percent slopes	13.8	1.3%
FuA	Fuquay sand, 0 to 2 percent slopes	2.1	0.2%
FuB	Fuquay sand, 2 to 6 percent slopes	132.6	12.9%
FuC	Fuquay sand, 6 to 10 percent slopes	37.5	3.6%
Jo	Johnston mucky loam	42.4	4.1%
LaB	Lakeland sand, 0 to 6 percent slopes	222.6	21.6%
LaD	Lakeland sand, 6 to 15 percent slopes	51.5	5.0%
TrB	Troup sand, 0 to 6 percent slopes, Carolina and Georgia Sand Hills	292.5	28.4%
TrC	Troup sand, 6 to 10 percent slopes, Carolina and Georgia Sand Hills	55.9	5.4%
VcD	Vaocluse-Ailey complex, 6 to 15 percent slopes	160.0	15.5%
VcE	Vaocluse-Ailey complex, 15 to 25 percent slopes	10.0	1.0%
W	Water	7.9	0.8%
Totals for Area of Interest		1,028.7	100.0%