



## Escambia River Tributary Recreational Property

80 +/- Acres (\$1,757/acre) | Santa Rosa County, FL | \$140,560



**National Land Realty**  
9 N. Conception St.  
Mobile, AL 36602  
[NationalLand.com](http://NationalLand.com)



**Chandler Guy**  
Office: 855-657-5263  
Cell: 850-503-1307  
Fax: 888-672-1810  
[Cguy@NationalLand.com](mailto:Cguy@NationalLand.com)

The above information is from sources deemed reliable, however the accuracy is not guaranteed.  
National Land Realty assumes no liability for error, omissions or investment results.



## PROPERTY SUMMARY

Own a piece of Florida along the Escambia River and its tributary with 80 +/- acres located between the cities of Pace and Pensacola, Florida.

The property's wood line along Highway 90 is abundant with deer sign, including deer trails in the marsh, and serves as a funnel for wildlife. Fishing and waterfowl hunting may also be possible along the the waterways.

A small section of an archeological site, named Moccasin Mound, is a shell mound and located on the northern end of the property. A conservation easement may be pursuable for tax benefits.



## ACREAGE BREAKDOWN

7 +/- acres wooded/roadway, 73 +/- acres marsh

## ADDRESS

0 HWY 90  
Pace, FL 32571

## TAXES

\$31/year (2023)

## LOCATION

Contact agent for directions.

## PROPERTY HIGHLIGHTS

- Conveniently located
- Hunting funnel between two cities
- Easy parking and walking

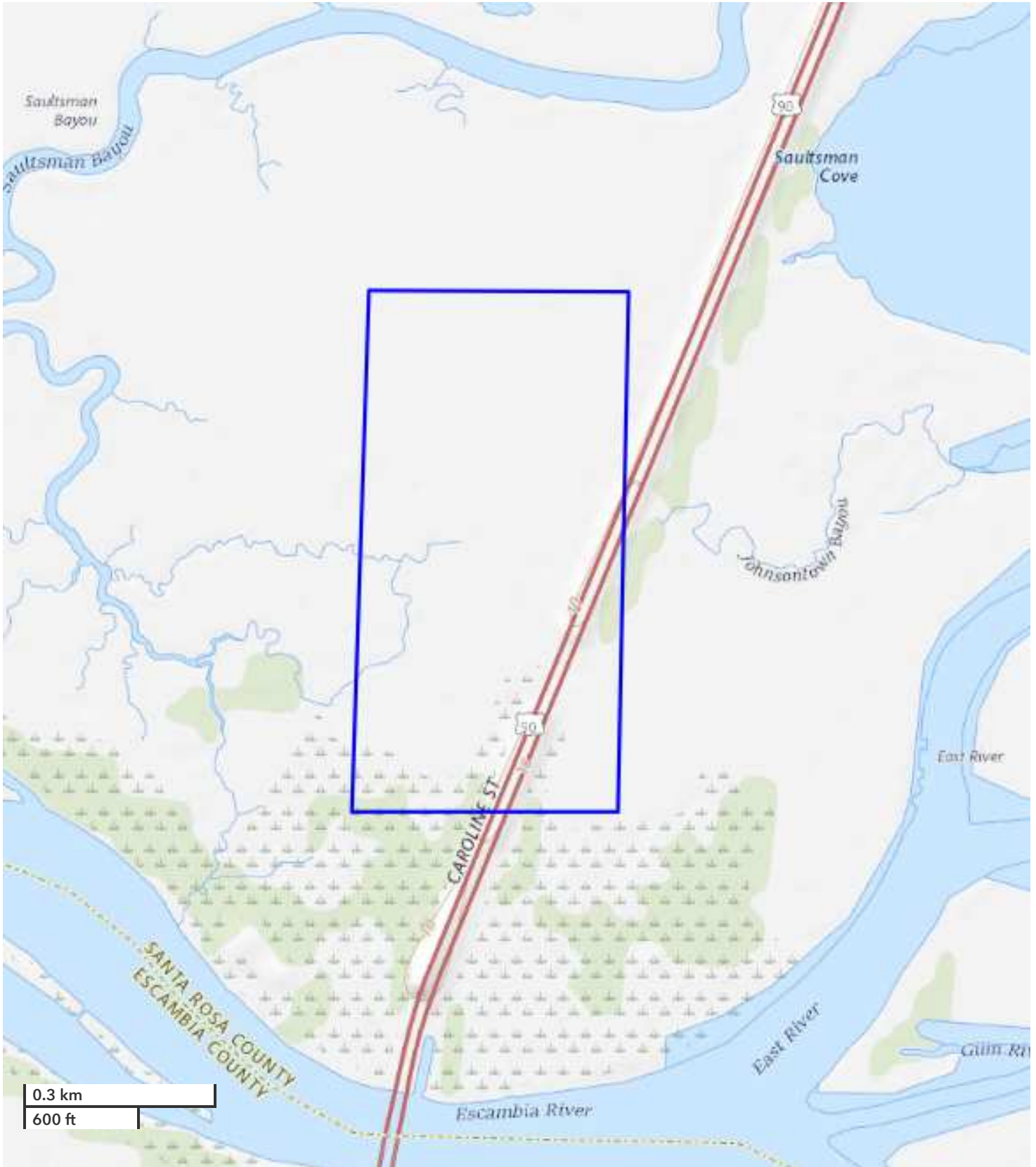


[nationalland.com/listing/escambia-river-tributary-recreational-property](https://nationalland.com/listing/escambia-river-tributary-recreational-property)





*All boundary lines noted in pictures, aerials or maps should be considered estimates and not relied on as legal documents or descriptions.*



*All boundary lines noted in pictures, aerials or maps should be considered estimates and not relied on as legal documents or descriptions.*



**NATIONAL  
LAND  
REALTY**

**National Land Realty**  
9 N. Conception St.  
Mobile, AL 36602  
[NationalLand.com](http://NationalLand.com)



**Chandler Guy**  
Office: 855-657-5263  
Cell: 850-503-1307  
Fax: 888-672-1810  
[Cguy@NationalLand.com](mailto:Cguy@NationalLand.com)

The above information is from sources deemed reliable, however the accuracy is not guaranteed.  
National Land Realty assumes no liability for error, omissions or investment results.



**NATIONAL  
LAND  
REALTY**

**National Land Realty**  
9 N. Conception St.  
Mobile, AL 36602  
[NationalLand.com](http://NationalLand.com)



**Chandler Guy**  
Office: 855-657-5263  
Cell: 850-503-1307  
Fax: 888-672-1810  
[Cguy@NationalLand.com](mailto:Cguy@NationalLand.com)

The above information is from sources deemed reliable, however the accuracy is not guaranteed.  
National Land Realty assumes no liability for error, omissions or investment results.