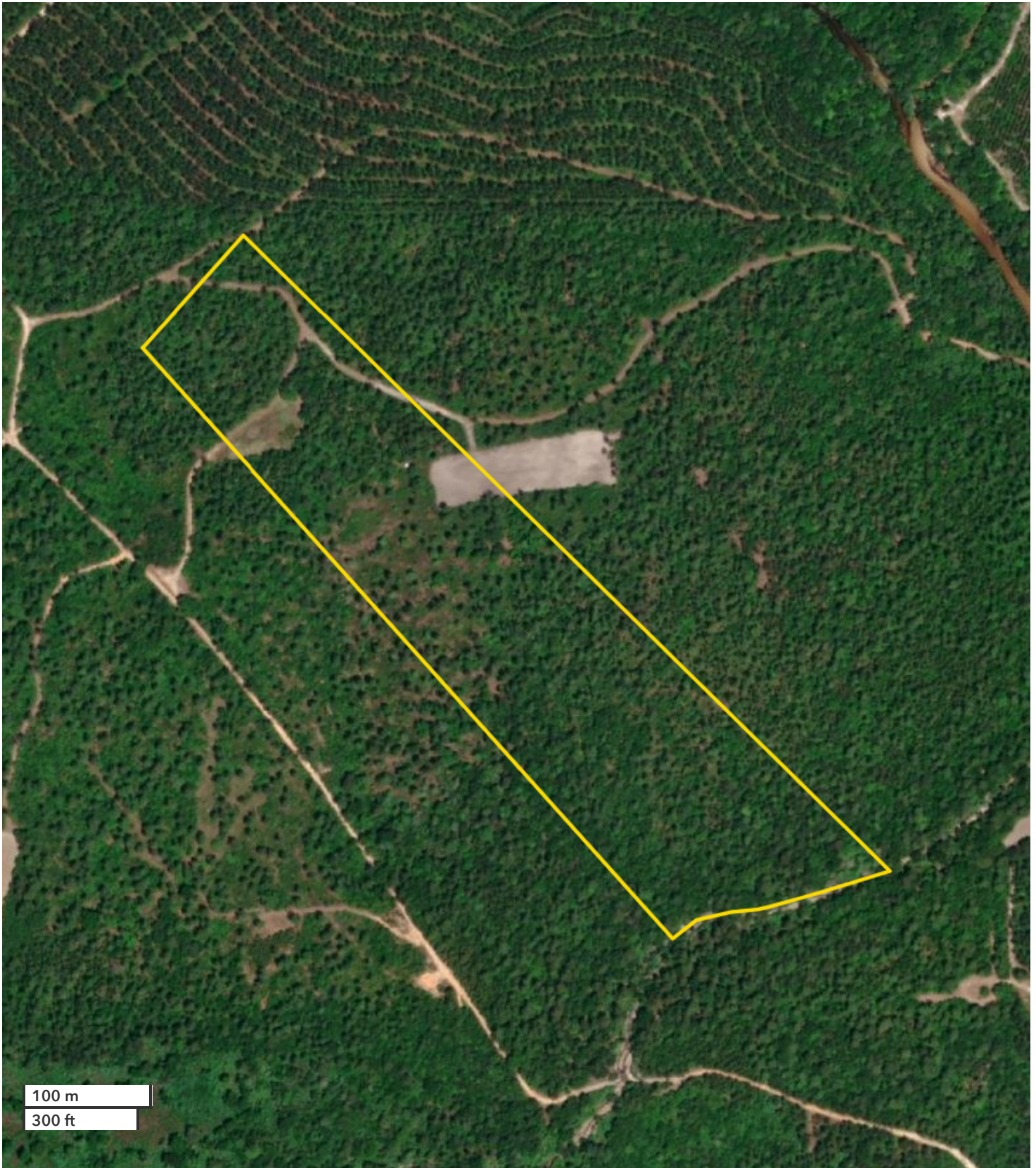




TOM LEATHERBURY, JR.  
Land Professional  
888-672-1810  
tleatherbury@nationalland.com  
251-422-5643  
855-657-5263

CLINT FLOWERS, ALC  
Partner  
888-672-1810  
cflowers@nationalland.com  
251-387-0787  
855-657-5263

Persimmon Creek Oasis Waterfront Homesite with A  
Baldwin County, AL  
22 +/- Acres



100 m  
300 ft

*All boundary lines noted in pictures, aerials or maps should be considered estimates and not relied on as legal documents or descriptions.*