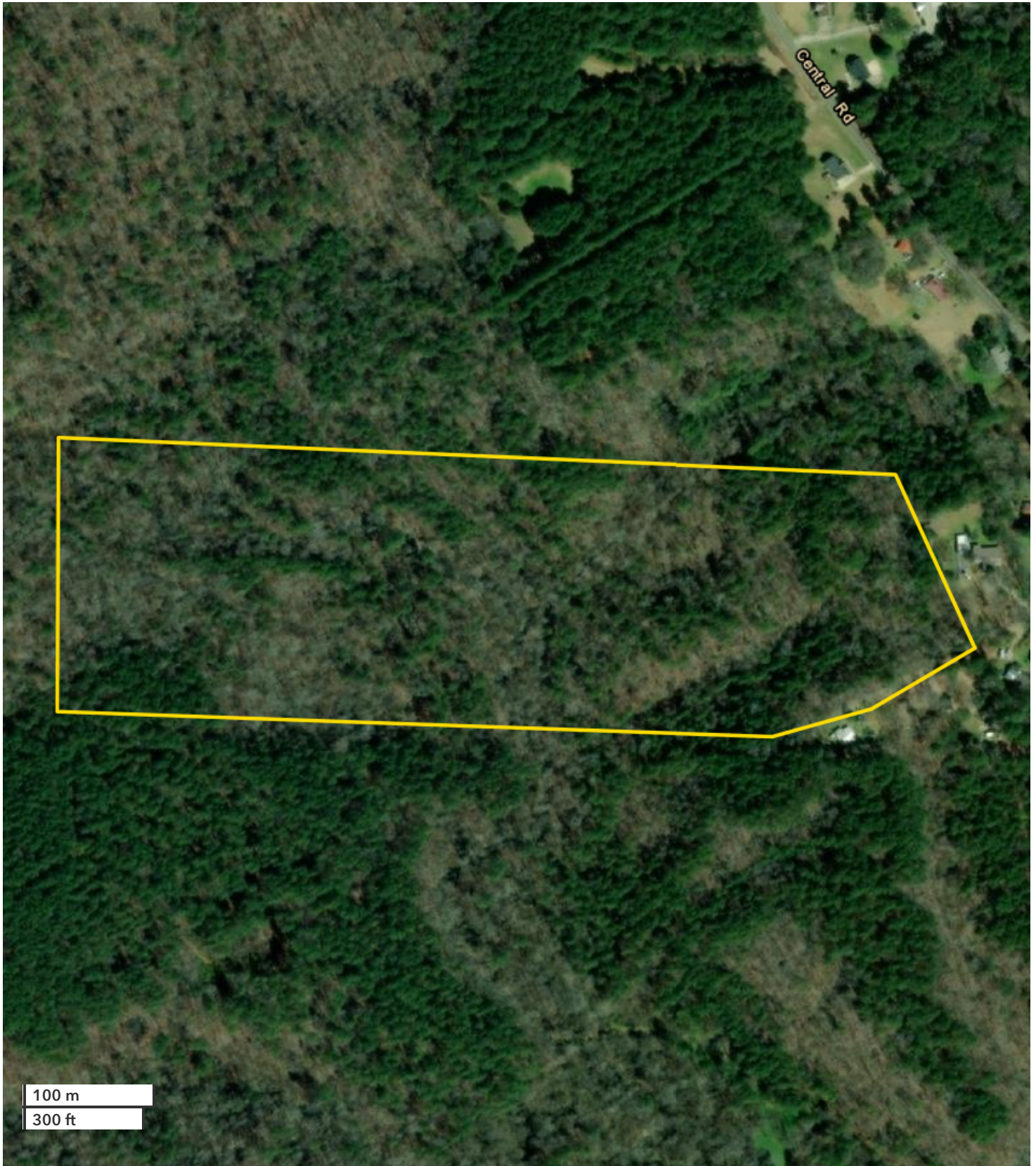




CHRIS PADGETT
Land Professional
864-331-1610
Cpadgett@nationalland.com
205-276-2446
855-384-5263

Brewer Creek Hunting/Recreational/Homesite Tract
Jefferson County, AL
32 +/- Acres



All boundary lines noted in pictures, aerials or maps should be considered estimates and not relied on as legal documents or descriptions.