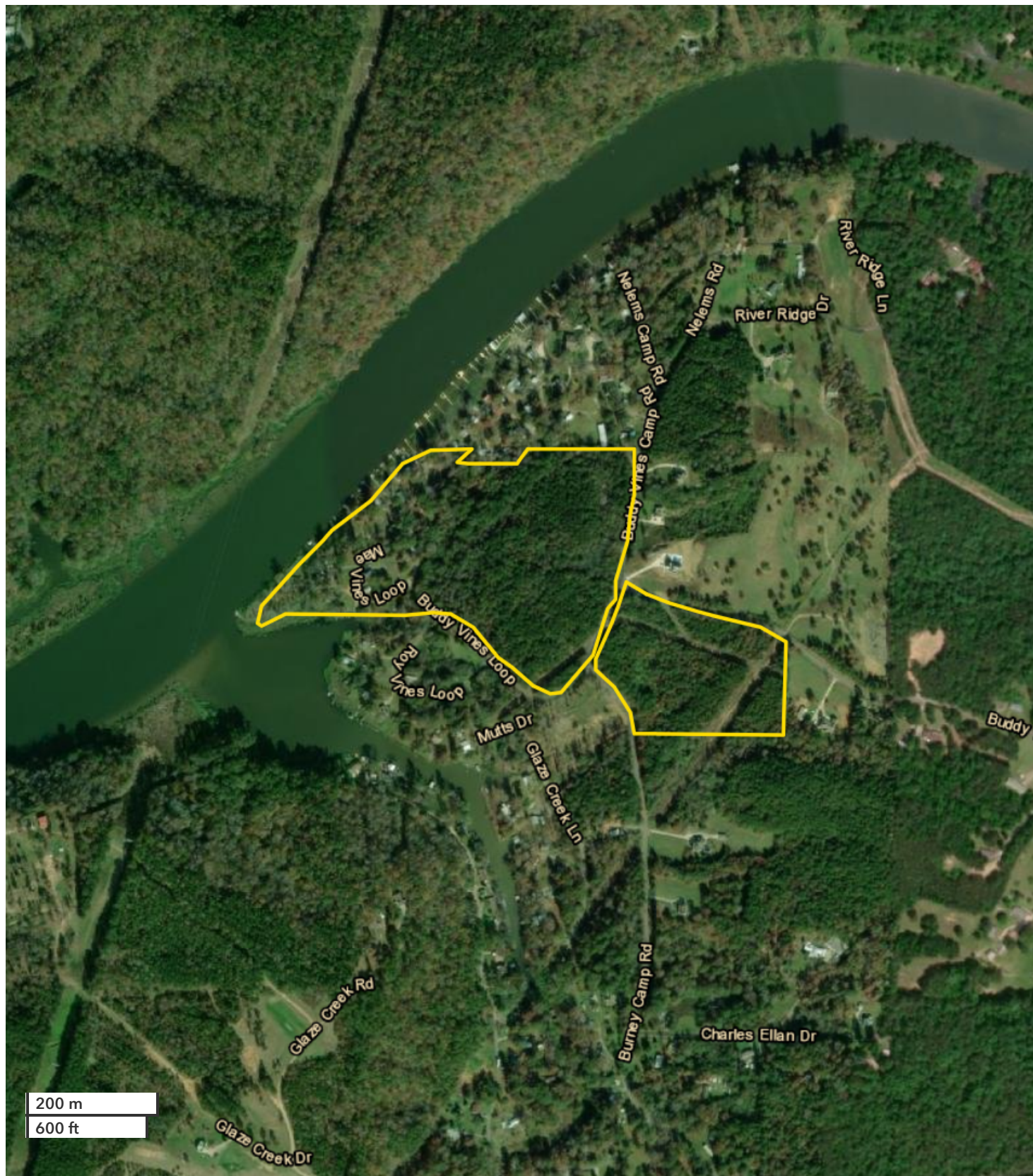




MITCHELL JONES  
Land Professional  
888-672-1810  
Mjones@NationalLand.com  
205-529-5500  
855-657-5263

HEATH FANT  
Land Professional  
864-331-1610  
Hfant@NationalLand.com  
205-240-3982  
205-438-6733

Warrior Riverfront Investment, Development, and Re  
Jefferson County, AL  
45 +/- Acres



*All boundary lines noted in pictures, aerals or maps should be considered estimates and not relied on as legal documents or descriptions.*