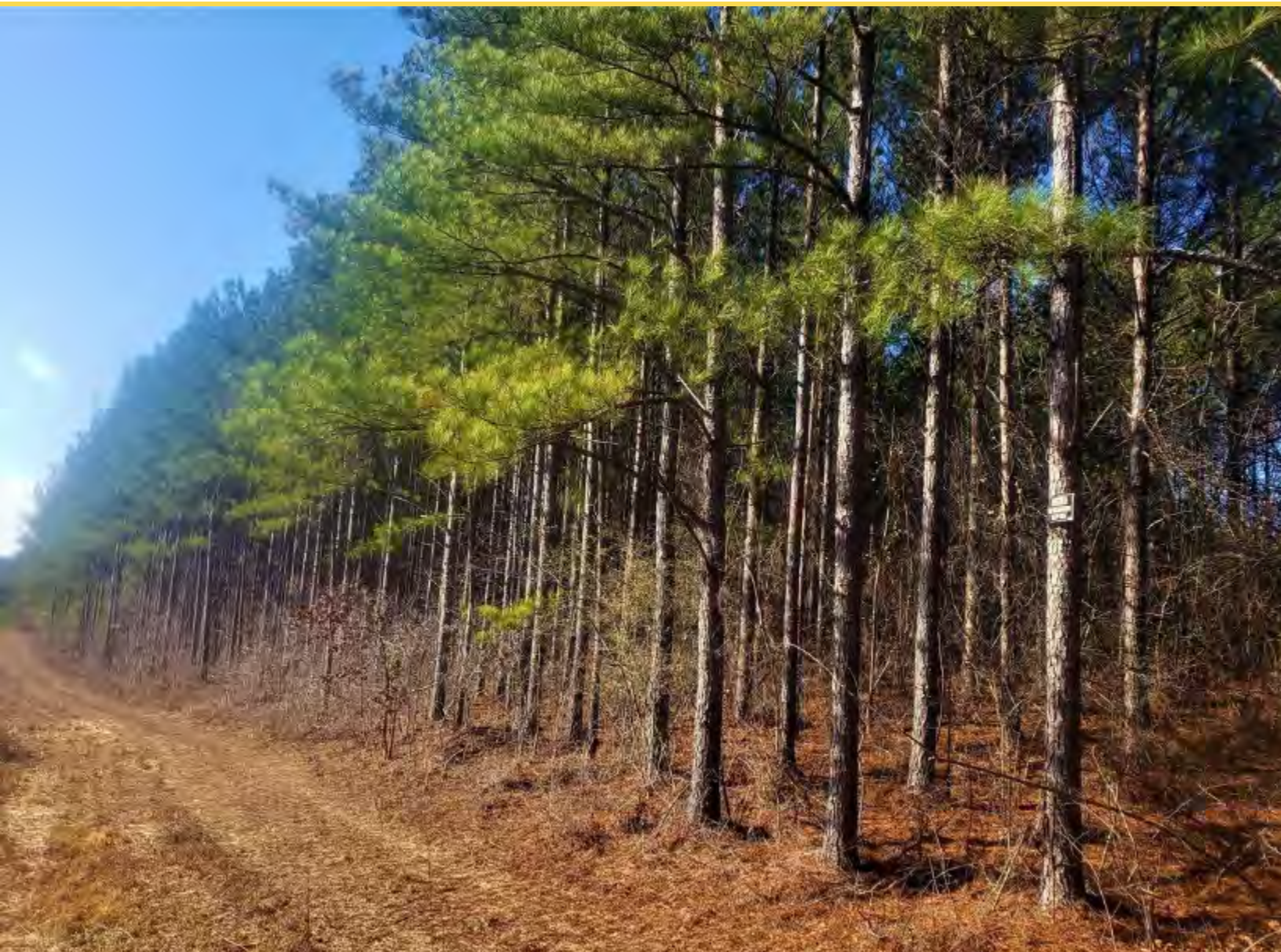




Brilliant Project Tract

40 +/- Acres | Marion County, AL | \$80,000



National Land Realty
308 Montgomery Highway
Suite A
Vestavia Hills, AL 35216
NationalLand.com

Heath Fant
Office: 205-438-6733
Cell: 205-240-3982
Fax: 864-331-1610
Hfant@NationalLand.com

Mitchell Jones
Office: 855-657-5263
Cell: 205-529-5500
Fax: 888-672-1810
Mjones@NationalLand.com

The above information is from sources deemed reliable, however the accuracy is not guaranteed.
National Land Realty assumes no liability for error, omissions or investment results.



PROPERTY SUMMARY

AUCTION AUCTION AUCTION

Contact Mike Fisher 256-613-9482

This 40+/- acre hunting recreational tract; just outside of Brilliant, is the perfect starting point for building a hunting tract the way you want it. This tract was clear cut 2 years ago. This will allow you to engineer roads, food plots, ponds, and camp sites the way you want. The topography is sloping to a gentle roll. The tracts surrounding it are managed timber, pasture, and agriculture. To the North, you have a large cutover with a few years growth providing good fawning and thermal climes for keeping warm. To the West 15- to 20-year-old plantation pine and hardwood for travel and holding wildlife. To the South 5- to 10-year-old plantation for thick bedding areas. To the East pasture and Ag land for grazing. This would allow you to make this tract a feeding center. You could plant 3 to 4 large multi-acre year-round food plots with supplement stations and draw deer and turkey from all directions. This is a proving ground waiting to happen. A clean slate with good surrounding support like this does not come around every day especially close enough to town to make it a day trip and back home in time for dinner.

ADDRESS

0 Center Church Road
Brilliant, AL 35548

LOCATION

Hwy 22 to Brilliant to Hwy 253
to Center Church Rd to property

TAXES

\$100/year ()

ACREAGE BREAKDOWN

40-acre clear cut

PROPERTY HIGHLIGHTS

- Location
- Ready to Start Proving Ground
- Investment Potential

nationalland.com/listing/brilliant-project-tract

