



## Hwy 80 Bypass Timber and Investment Property

47 +/- Acres | Dallas County, AL | \$79,900



### ADDRESS

Selma, AL 36701

### LOCATION

Located off the Hwy 80 Bypass.

### PROPERTY SUMMARY

This property is on the edge of Selma city limits. It has mixed timber and the potential to be developed one day. If you're looking for an investment tract, this one is one to check out. For more information, call Will Hairston at 334-349-2001.



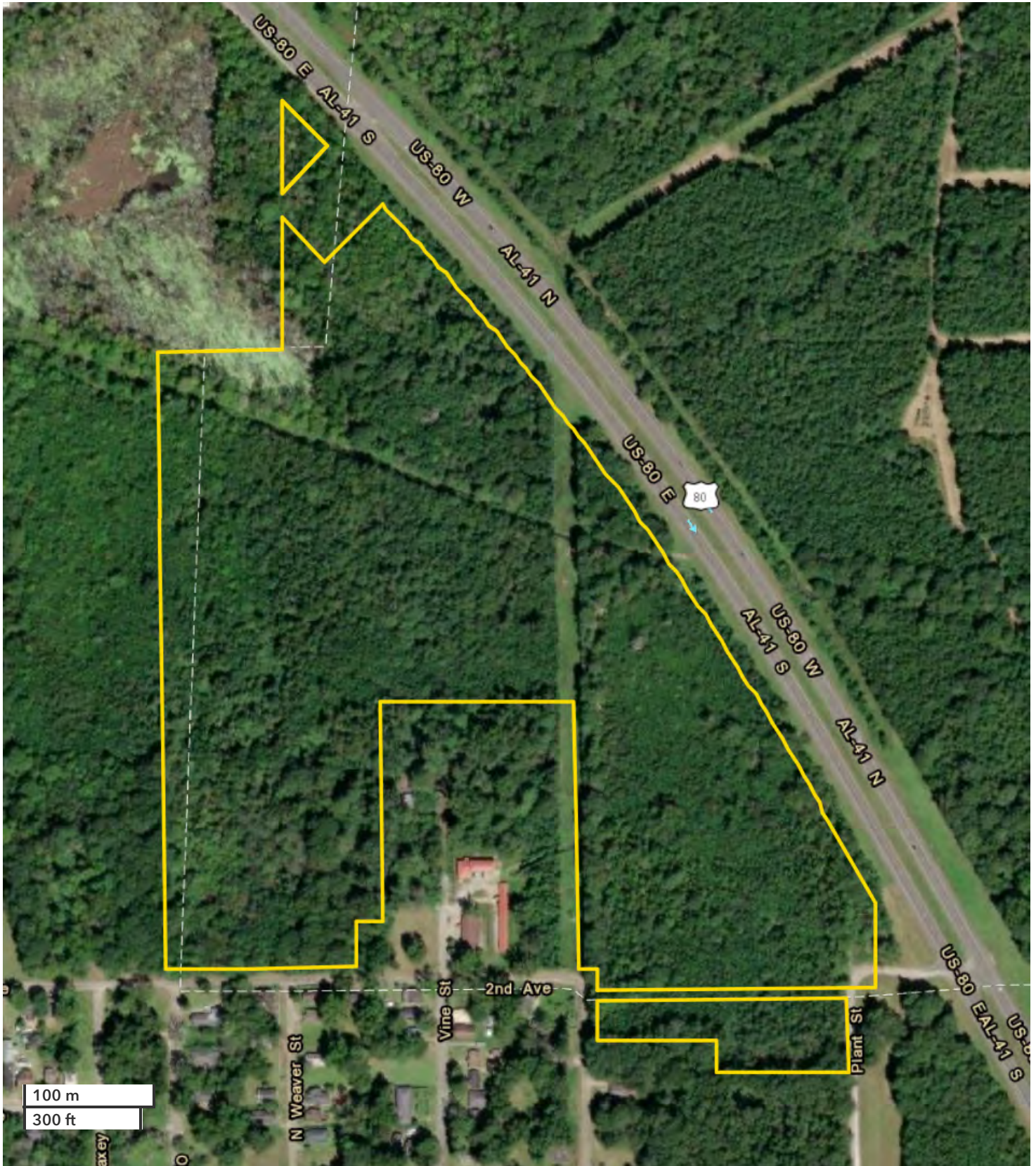
**National Land Realty**  
9 N. Conception St.  
Mobile, AL 36602  
[NationalLand.com](http://NationalLand.com)



**Will Hairston**  
Office: 855-657-5263  
Cell: 334-349-2001  
Fax: 888-672-1810  
[Whairston@NationalLand.com](mailto:Whairston@NationalLand.com)

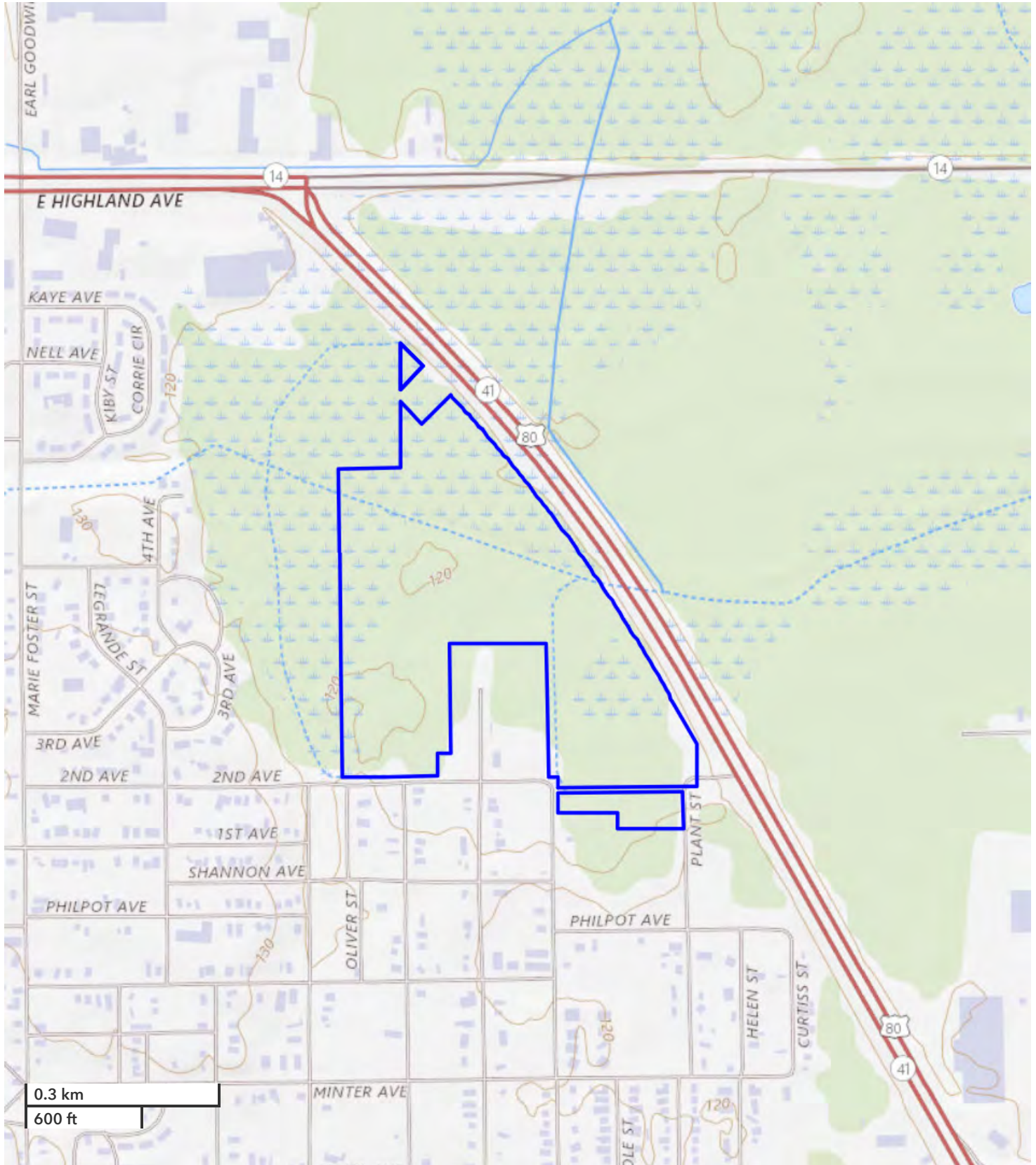
The above information is from sources deemed reliable, however the accuracy is not guaranteed.  
National Land Realty assumes no liability for error, omissions or investment results.





*All boundary lines noted in pictures, aerals or maps should be considered estimates and not relied on as legal documents or descriptions.*





*All boundary lines noted in pictures, aerials or maps should be considered estimates and not relied on as legal documents or descriptions.*