



Wilton Homestead, Timber, and Hunting Tract

47 +/- Acres | Shelby County, AL | \$329,000



National Land Realty
9 N. Conception St.
Mobile, AL 36602
NationalLand.com

Will Hairston
Office: 855-657-5263
Cell: 334-349-2001
Fax: 888-672-1810
Whairston@NationalLand.com

Mitchell Jones
Office: 855-657-5263
Cell: 205-529-5500
Fax: 888-672-1810
Mjones@NationalLand.com

The above information is from sources deemed reliable, however the accuracy is not guaranteed.
National Land Realty assumes no liability for error, omissions or investment results.



PROPERTY SUMMARY

This excellent home site and hunting property is located just off Randolph Road near Wilton in Shelby County, Alabama. It offers excellent hunting and a great spot to build a home.

ADDRESS

Wilton, AL 35187

LOCATION

Located just South of Wilton on Randolph Road.

PROPERTY HIGHLIGHTS

- Deer and Turkey
- Secluded
- Wooded
- Home Site

ACREAGE BREAKDOWN

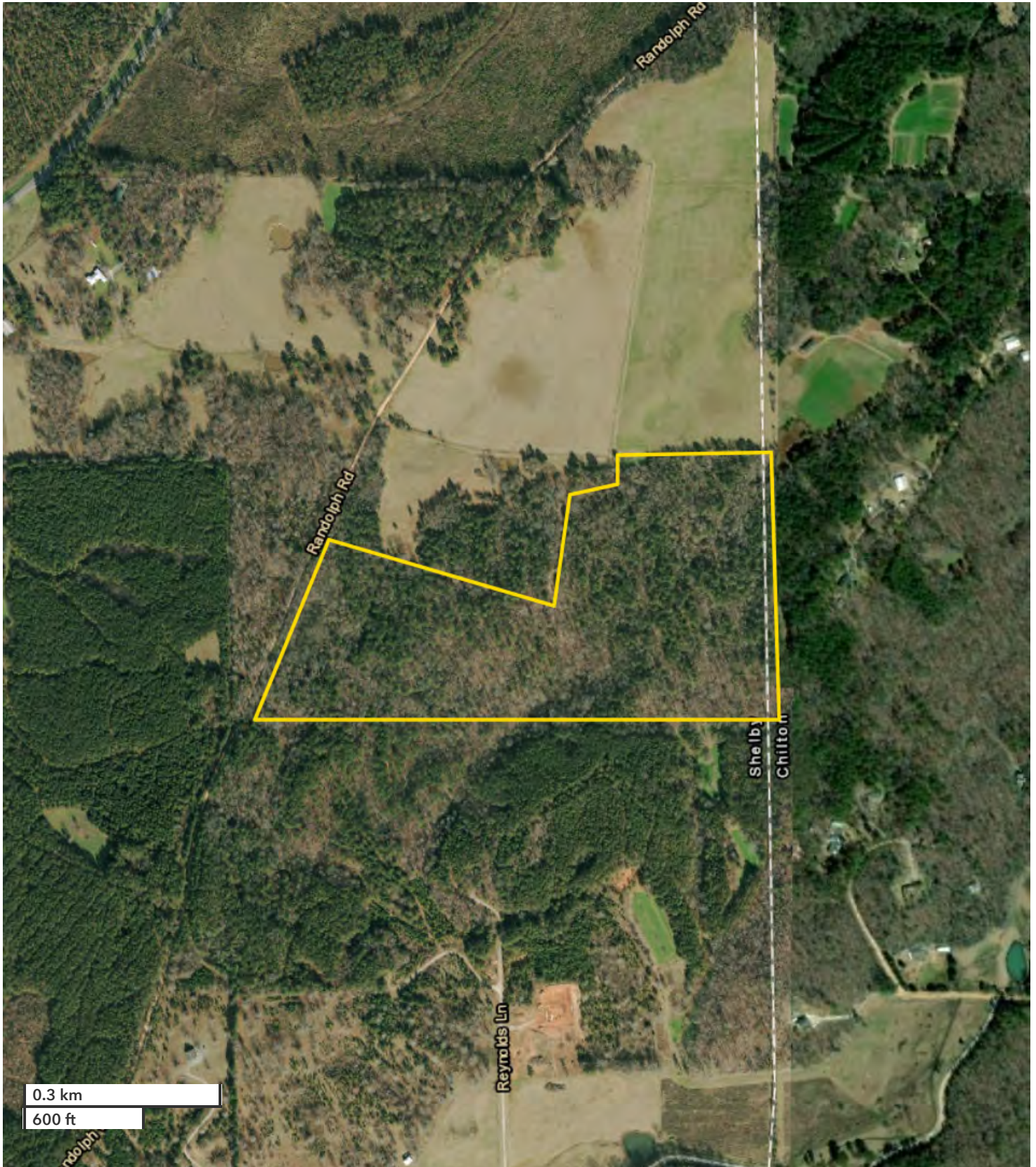
47+/- acres (merchantable timber)



WILL HAIRSTON
Land Professional
888-672-1810
Whairston@NationalLand.cc
334-349-2001
855-657-5263

MITCHELL JONES
Land Professional
888-672-1810
Mjones@NationalLand.com
205-529-5500
855-657-5263

Wilton Homestead, Timber and Hunting Tract
Shelby County, AL
47 +/- Acres



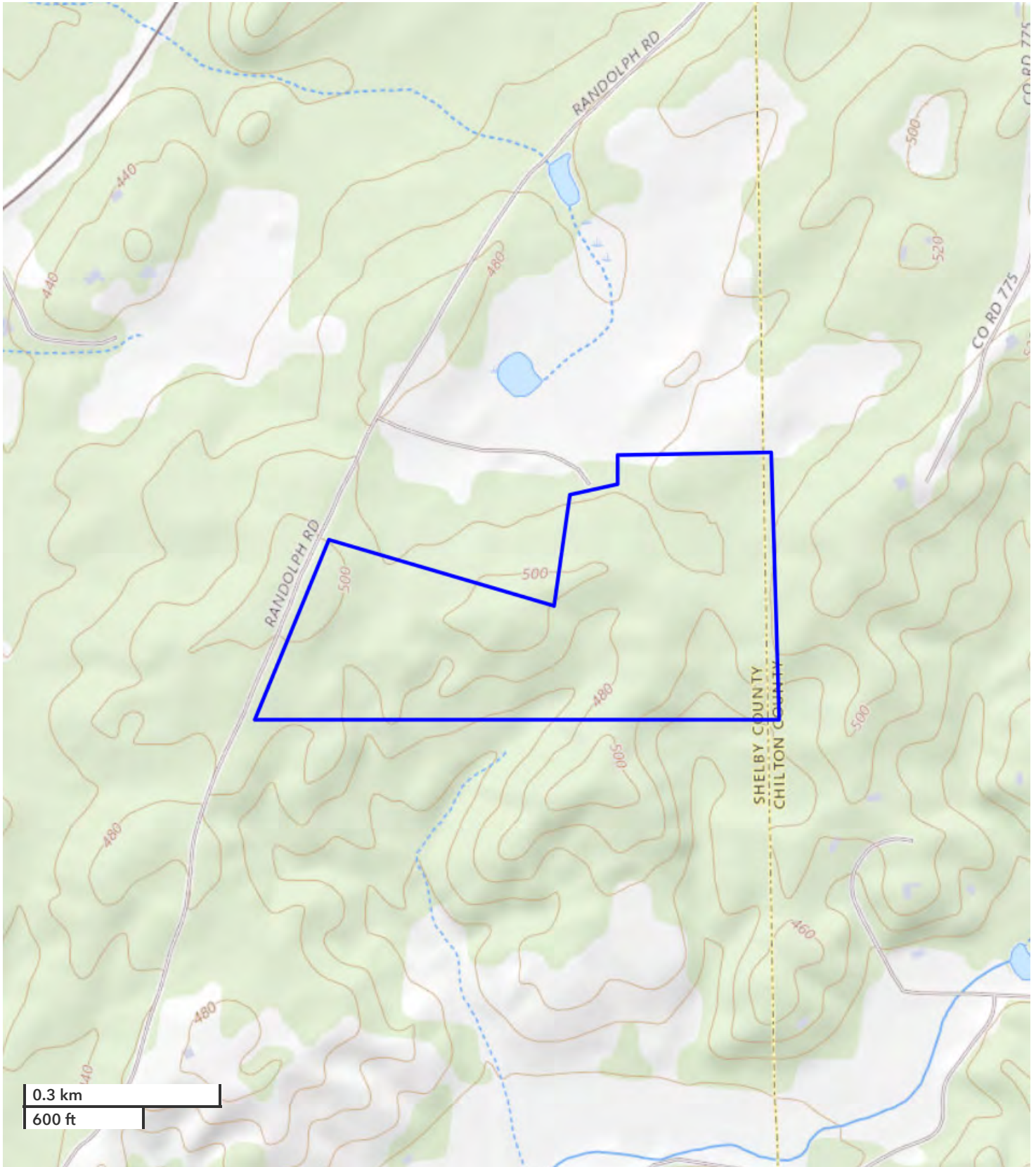
All boundary lines noted in pictures, aerals or maps should be considered estimates and not relied on as legal documents or descriptions.



WILL HAIRSTON
Land Professional
888-672-1810
Whairston@NationalLand.cc
334-349-2001
855-657-5263

MITCHELL JONES
Land Professional
888-672-1810
Mjones@NationalLand.com
205-529-5500
855-657-5263

Wilton Homestead, Timber and Hunting Tract
Shelby County, AL
47 +/- Acres



All boundary lines noted in pictures, aerials or maps should be considered estimates and not relied on as legal documents or descriptions.