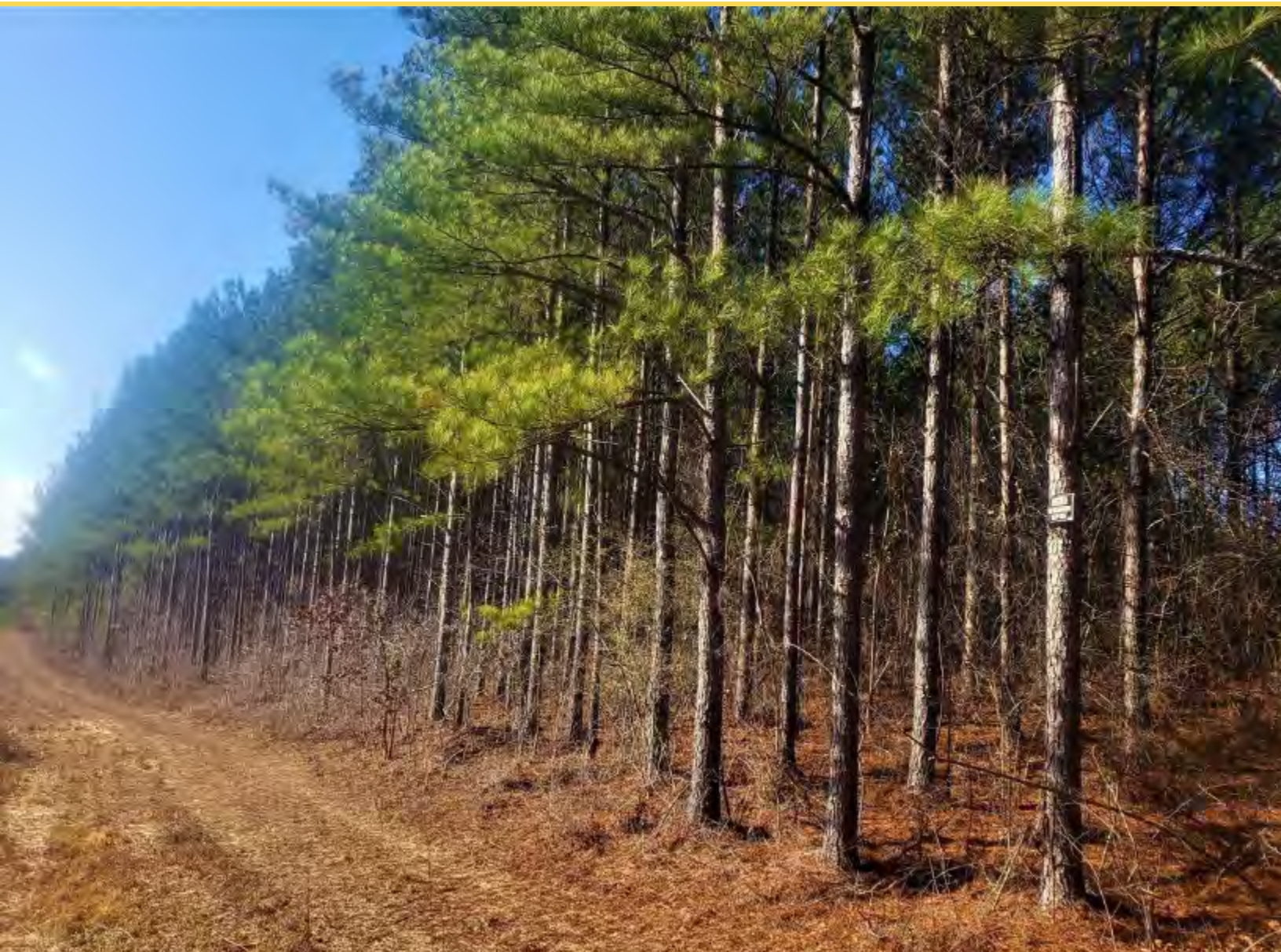




## Brilliant Project Tract

40 +/- Acres | Marion County, AL | \$80,000



**National Land Realty**  
308 Montgomery Highway  
Suite A  
Vestavia Hills, AL 35216  
[NationalLand.com](http://NationalLand.com)

**Heath Fant**  
Office: 205-438-6733  
Cell: 205-240-3982  
Fax: 864-331-1610  
[Hfant@NationalLand.com](mailto:Hfant@NationalLand.com)

**Mitchell Jones**  
Office: 855-657-5263  
Cell: 205-529-5500  
Fax: 888-672-1810  
[Mjones@NationalLand.com](mailto:Mjones@NationalLand.com)

The above information is from sources deemed reliable, however the accuracy is not guaranteed.  
National Land Realty assumes no liability for error, omissions or investment results.





## PROPERTY SUMMARY

This 40+/- acre hunting recreational tract; just outside of Brilliant, is the perfect starting point for building a hunting tract the way you want it. This tract was clear cut 2 years ago. This will allow you to engineer roads, food plots, ponds, and camp sites the way you want. The topography is sloping to a gentle roll. The tracts surrounding it are managed timber, pasture, and agriculture. To the North, you have a large cutover with a few years growth providing good fawning and thermal clines for keeping warm. To the West 15- to 20-year-old plantation pine and hardwood for travel and holding wildlife. To the South 5- to 10-year-old plantation for thick bedding areas. To the East pasture and Ag land for grazing. This would allow you to make this tract a feeding center. You could plant 3 to 4 large multi-acre year-round food plots with supplement stations and draw deer and turkey from all directions. This is a proving ground waiting to happen. A clean slate with good surrounding support like this does not come around every day especially close enough to town to make it a day trip and back home in time for dinner. If you have ever wanted a wildlife project property you could build your way, this is it.

**ADDRESS**

0 Center Church Road  
Brilliant, AL 35548

**LOCATION**

Hwy 22 to Brilliant to Hwy 253  
to Center Church Rd to property

**TAXES**

\$100/year ()

**ACREAGE BREAKDOWN**

40-acre clear cut

**PROPERTY HIGHLIGHTS**

- Location
- Ready to Start Proving Ground
- Investment Potential





HEATH FANT  
Land Professional  
864-331-1610  
Hfant@NationalLand.com  
205-240-3982  
205-438-6733

MITCHELL JONES  
Land Professional  
888-672-1810  
Mjones@NationalLand.com  
205-529-5500  
855-657-5263

Brilliant Project Tract  
Marion County, AL  
40 +/- Acres



*All boundary lines noted in pictures, aerals or maps should be considered estimates and not relied on as legal documents or descriptions.*

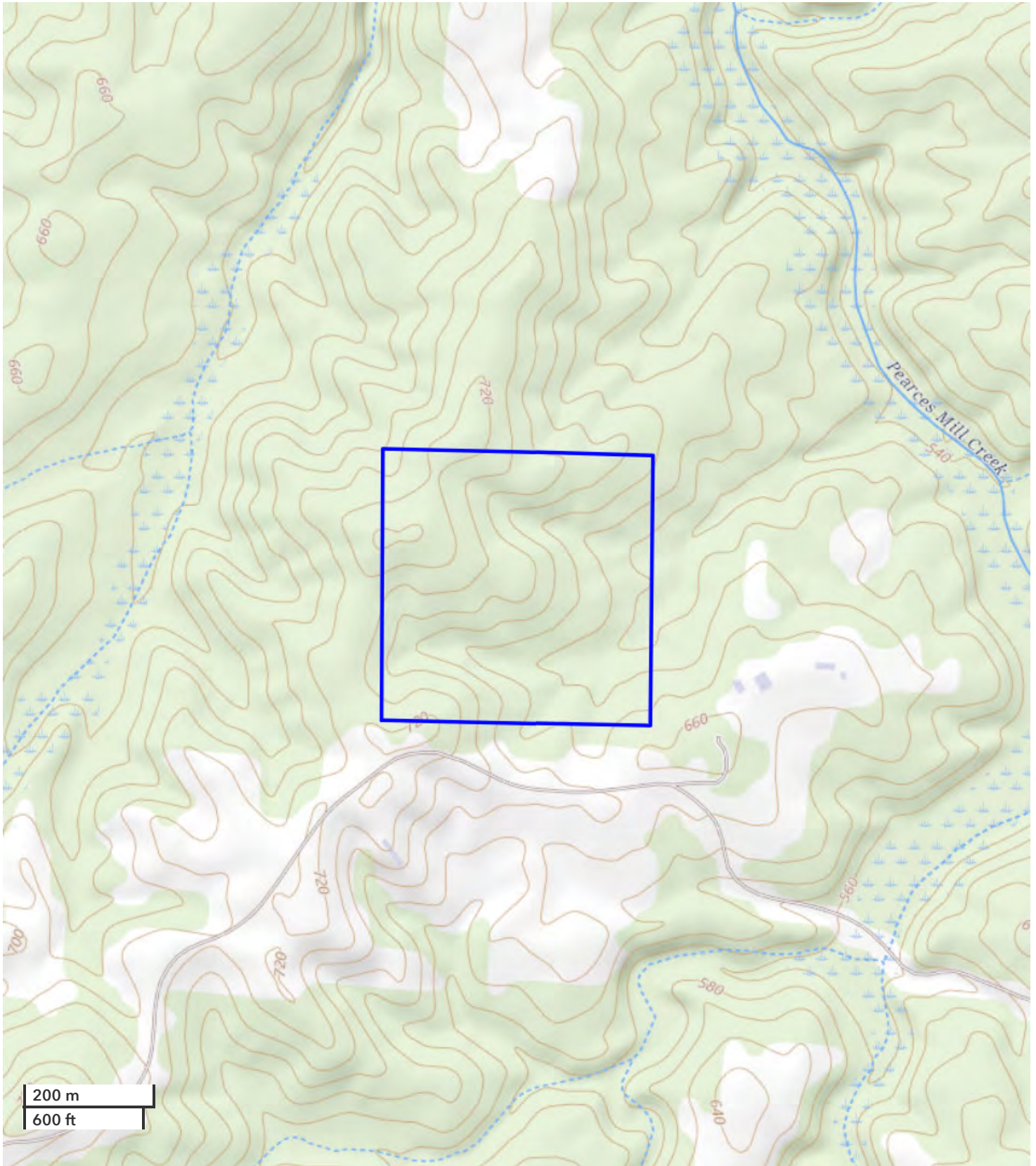




HEATH FANT  
Land Professional  
864-331-1610  
Hfant@NationalLand.com  
205-240-3982  
205-438-6733

MITCHELL JONES  
Land Professional  
888-672-1810  
Mjones@NationalLand.com  
205-529-5500  
855-657-5263

Brilliant Project Tract  
Marion County, AL  
40 +/- Acres



*All boundary lines noted in pictures, aerials or maps should be considered estimates and not relied on as legal documents or descriptions.*