



Berrydale Homesite and Recreational Tract

41.83 +/- Acres | Santa Rosa County, FL | \$495,000



National Land Realty
9 N. Conception St.
Mobile, AL 36602
NationalLand.com



Chandler Guy
Office: 855-657-5263
Cell: 850-503-1307
Fax: 888-672-1810
Cguy@NationalLand.com

The above information is from sources deemed reliable, however the accuracy is not guaranteed.
National Land Realty assumes no liability for error, omissions or investment results.



PROPERTY SUMMARY

Located on Whitfield Road in Milton, in the Berrydale community, this picturesque, quiet country setting offers several opportunities and a tranquil retreat conveniently located near Florida's most beautiful beaches.

The tract may offer either a homesite on the front ten acres, requiring little clearing and leaving the back thirty acres as hunting and recreational property, or the back ten acres as a dream homesite overlooking a pond, beautiful scenery, and isolated privacy from the road with available hunting to the east and to the south well off a future access road.

The property is traced with great trails that lead to multiple food plots and shooting lanes, as well as a small stream that run along the northeast corner. The sparse, mature pines, towering over small shrubs and young, planted longleaf pines offer a stunning view of sunrises and sunsets.



ADDRESS

0 Whitfield Road
Milton, FL 32570

LOCATION

From Highway 90 in Pace and Milton, turn North onto Stewart Street and remain on Highway 87 North for 15 miles until turning right onto Whitfield Road. Drive down Whitfield Road for 1.5 miles. All roads are paved and well maintained.

ACREAGE BREAKDOWN

41 +/- acres (25 +/- acres planted longleaf and sparse mature pine, 5 +/- acres of standing timber, 10 +/- acres mixed hardwood and wetland, 1 +/- acre pond)

TAXES

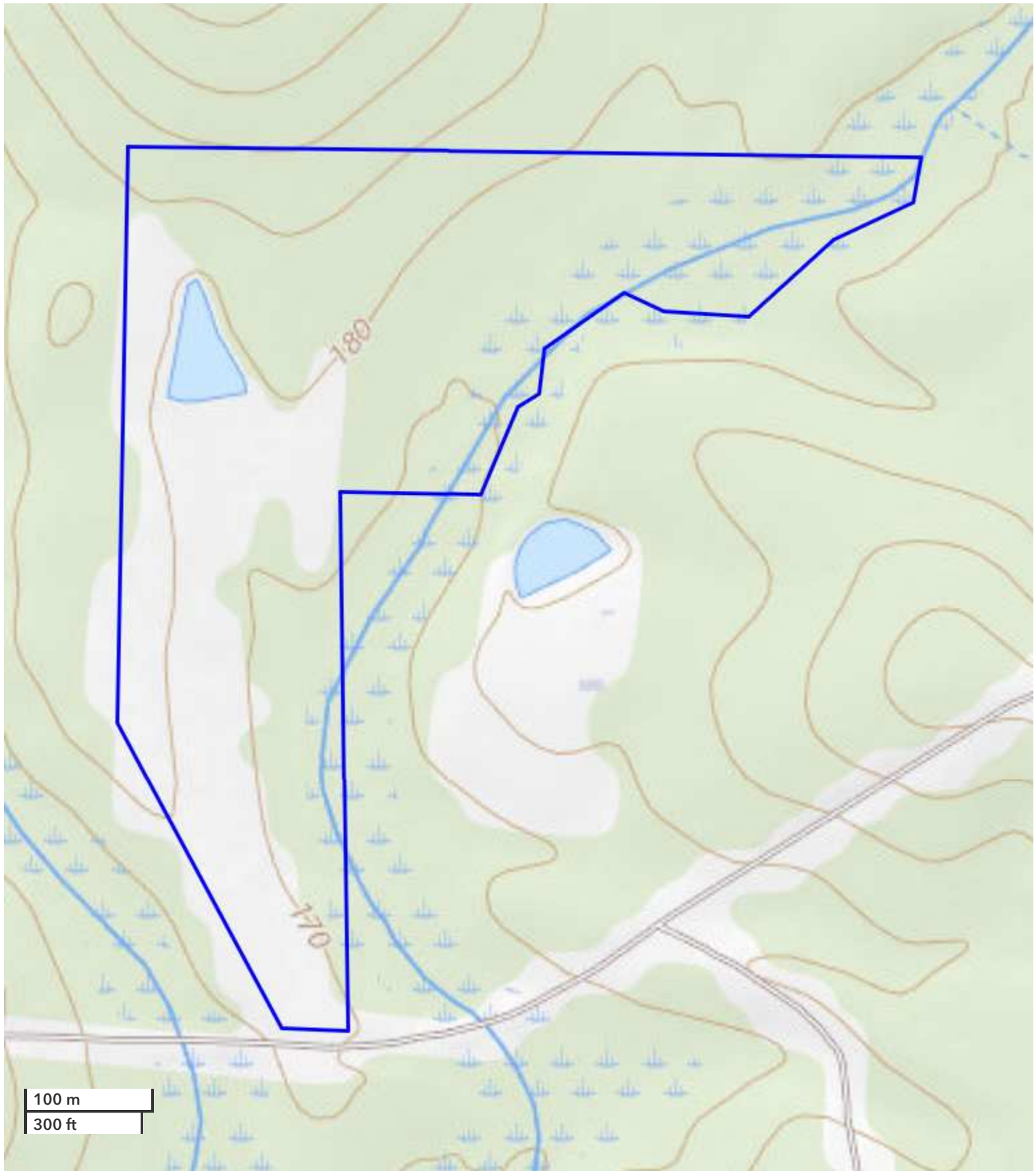
\$71/year (2021)

PROPERTY HIGHLIGHTS

- Beautiful and private setting for a homesite.
- Land teeming with an abundance of deer and turkey.
- Conveniently located 10 minutes from Jay, 25 minutes from downtown Milton, and less than one hour from Navarre Beach.
- Absolutely gorgeous piece of land.
- Excellent county maintained roads provide quick access.









**NATIONAL
LAND
REALTY®**

National Land Realty
9 N. Conception St.
Mobile, AL 36602
NationalLand.com



Chandler Guy
Office: 855-657-5263
Cell: 850-503-1307
Fax: 888-672-1810
Cguy@NationalLand.com

The above information is from sources deemed reliable, however the accuracy is not guaranteed.
National Land Realty assumes no liability for error, omissions or investment results.